

Rear Accent Light For Kawasaki Teryx KRX 1000

ZP-YJ-031002-004

BEFORE YOU BEGIN

Read these instructions and check to be sure all parts and tools are accounted. Please retain these installation instructions for future reference.

IMPORTANT

This REAR ACCENT LIGHT KIT is exclusively designed for your vehicle. Please read the installation instructions thoroughly before beginning. Installation is easier if the vehicle is clean and free of debris.

INSTALLATION INSTRUCTIONS

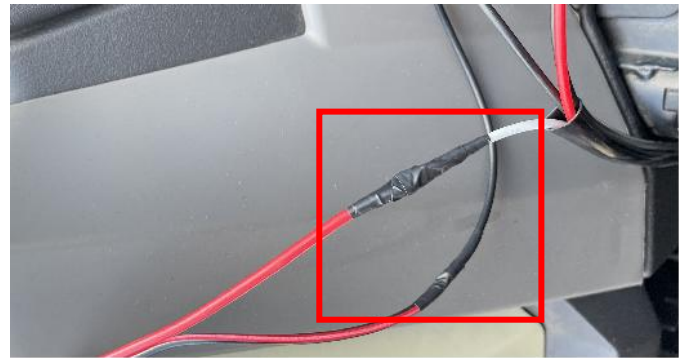
1. Shift vehicle transmission into "PARK". Turn key to "OFF" position and remove from vehicle.
2. Products and accessories.



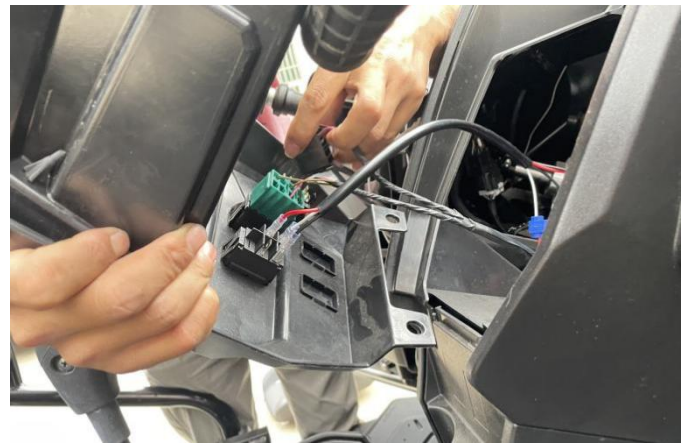
3. Remove the central control storage box of the vehicle, and then pry open a switch cover on the panel of the storage box, and install the switch matching the product (If the switch hole is small, use a utility knife to make the hole larger).

Rear Accent Light For Kawasaki Teryx KRX 1000

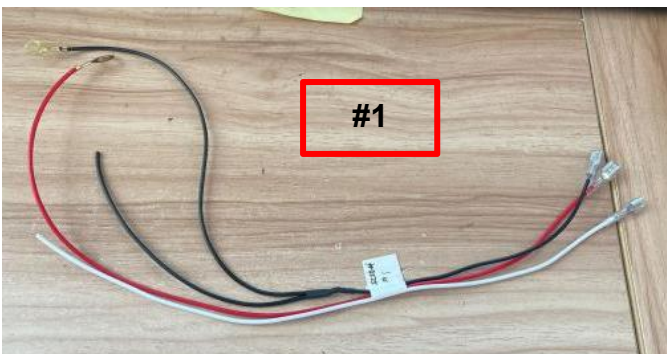
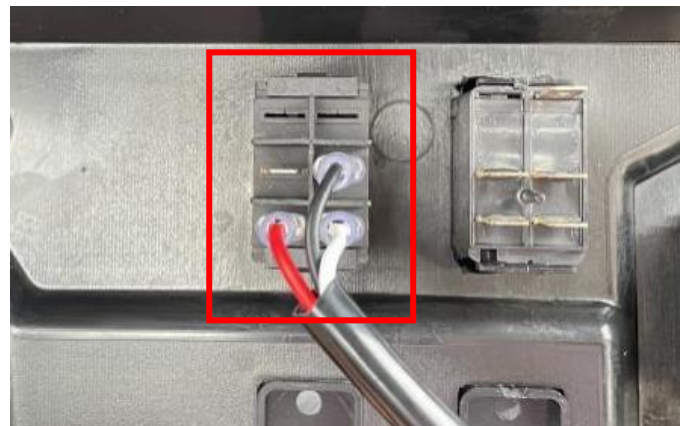
ZP-YJ-031002-004



4. Connect the #1 conversion wire in the product accessories to one end of the extension cable (strip the outer skin of the wiring harness connector, expose the copper wire inside, wrap the copper wire of the two wires together, and then do insulation protection), and then clamp the end of the copper piece with the sheath on the switch (pay attention to the installation order of the copper piece). Finally, the vehicle's skip switch plug-in is stuck.

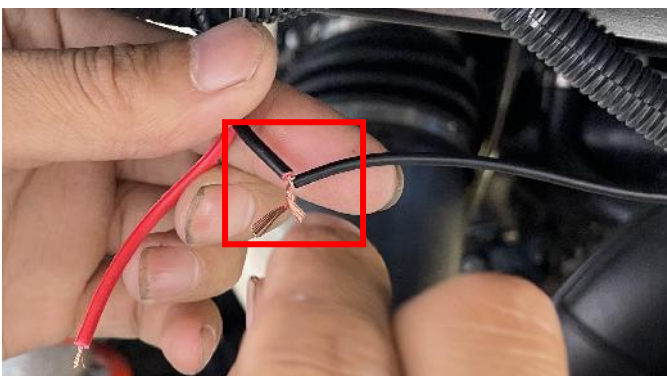


NOTE: When wiring, pay attention to black connect black, red connect white, do not connect wrong.



5. Remove the seat cushion of the cab, remove the lower guard plate on the side of the gear lever, the decorative shell of the gear lever and the cover plate of the oil pot behind the seat.

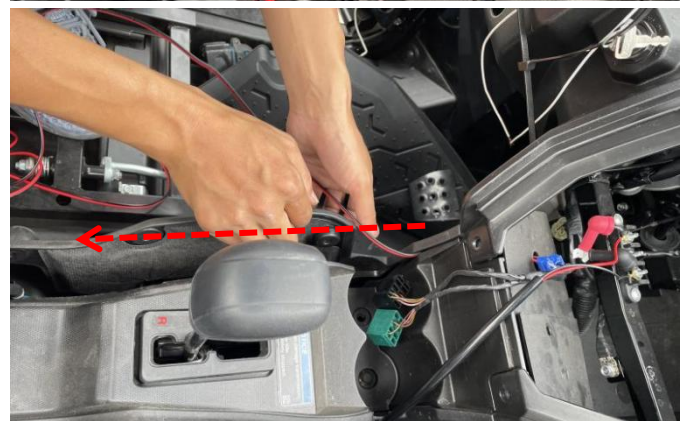
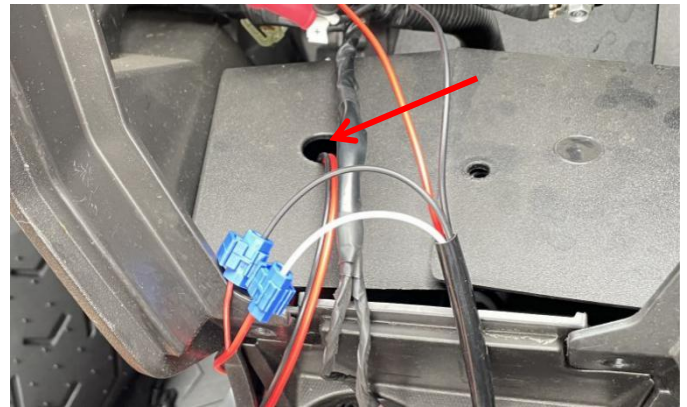
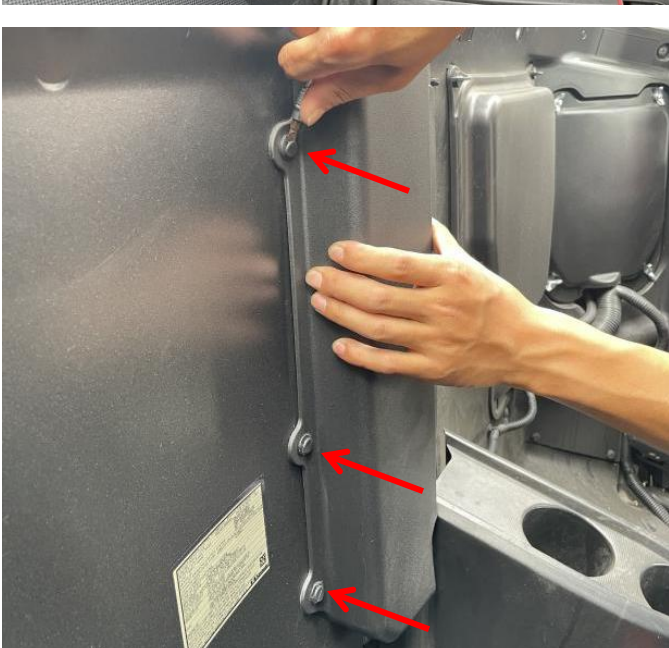
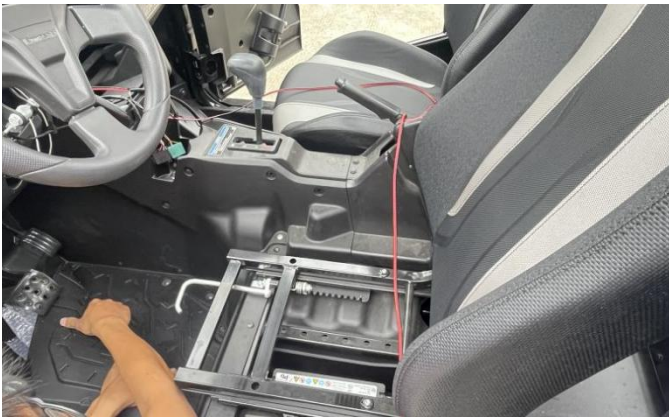
(NOTE: The lower guard plate and the decorative frame of the stop rod need not be completely removed, and the screws can be removed only for the convenience of subsequent wire crossing)



Rear Accent Light For Kawasaki Teryx KRX 1000

ZP-YJ-031002-004

6. Pull the extension cable through the outlet hole below the terminal block to the outlet hole behind the gearshift lever. (The extension cable passing through the cockpit needs to be hidden in the guard plate just removed as well as the gear lever trim shell, and finally sort out the extension cable).

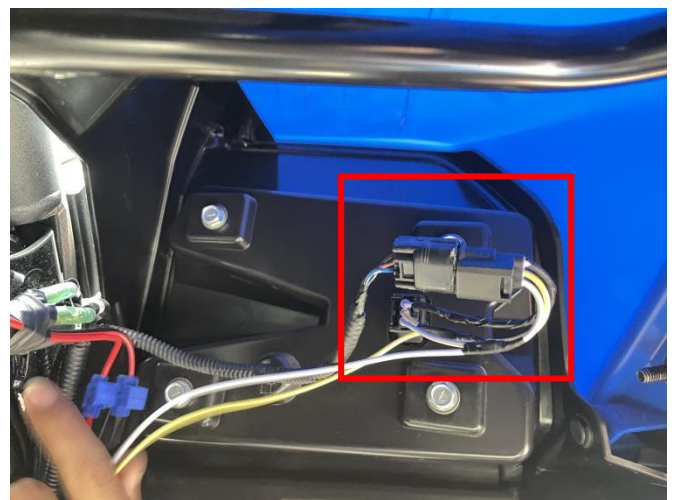
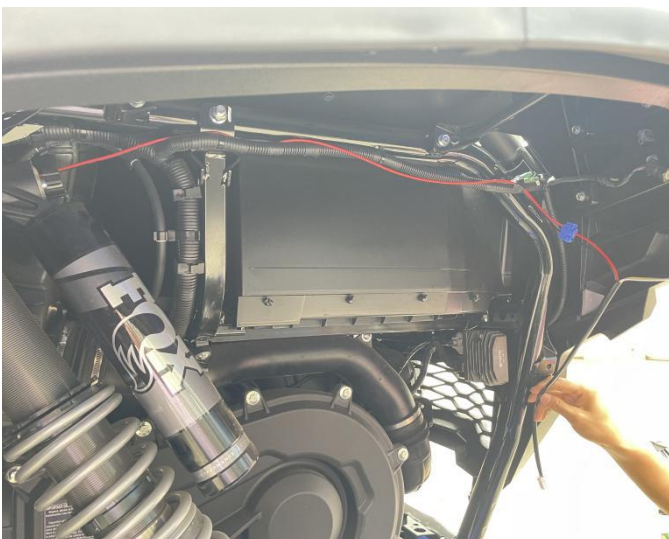
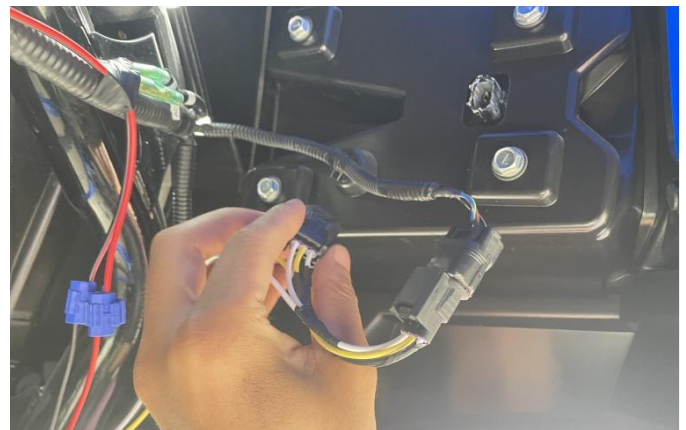
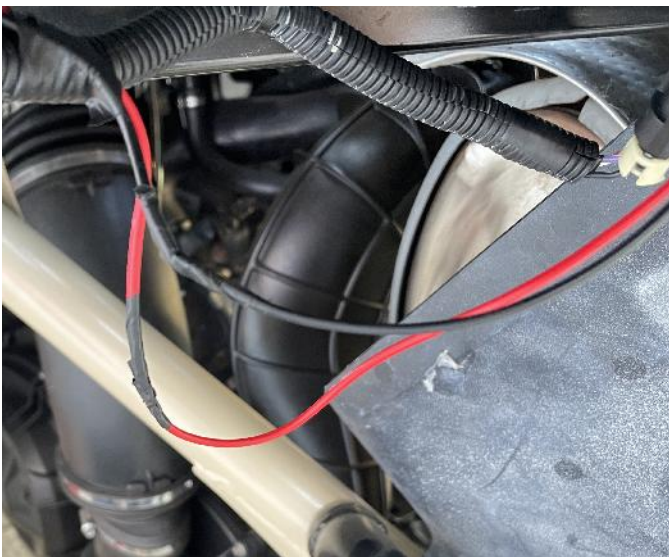
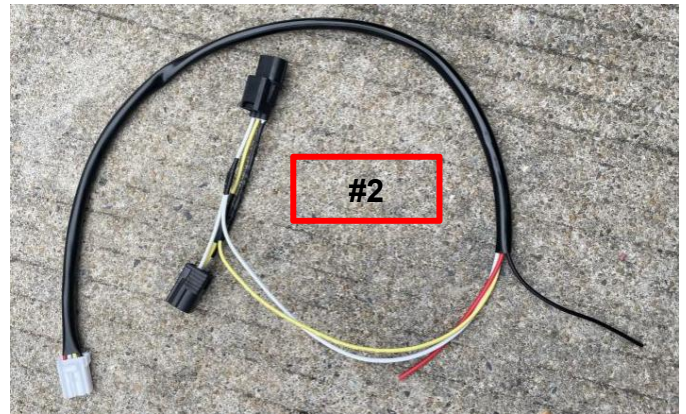
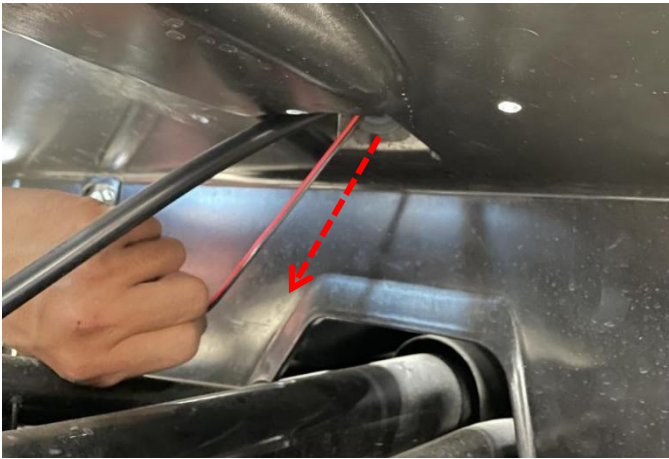


7. Put the extension cable through the rear exit hole outside the vehicle, along the whole car wiring alignment, pull the extension cable to the rear accent light installation, (the middle of the loose extension cable can be fixed with a cable tie). Use another adapter to connect with the extension cable, use the same wiring method as step 5 to connect it well.

Rear Accent Light For Kawasaki Teryx KRX 1000

ZP-YJ-031002-004

SAUTV5



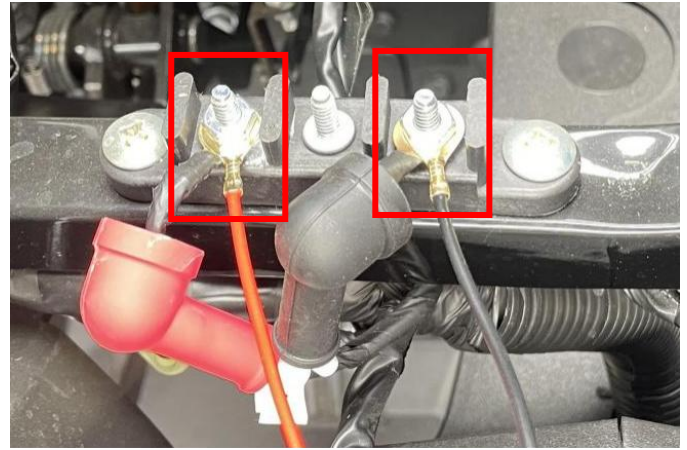
8. Disconnect the vehicle's rear tail light harness plug-in (preferably choose the tail light behind the driver), then use #2 adapter wire to re-connect the tail light harness and the overall harness according to the corresponding plug-in.

9. Rear accent light harness through the center grid, place the light on the rear bumper, according to the positioning holes on the rear accent light, use a 6mm drill bit to punch out the screw holes, and then use the screws and nuts to fix, and finally dock the rear accent light harness with the #2 adapter wire.

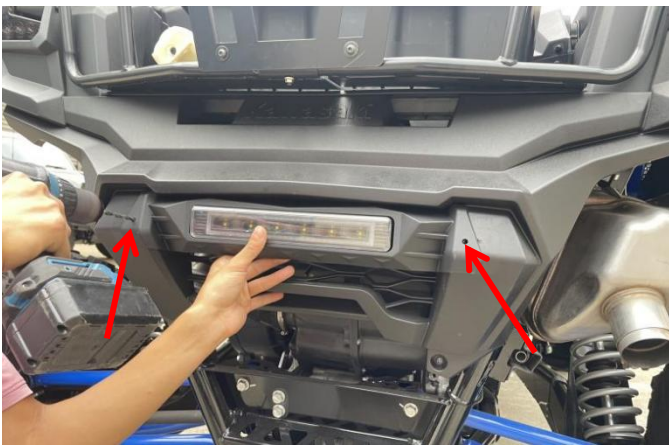
Rear Accent Light For Kawasaki Teryx KRX 1000

ZP-YJ-031002-004

SAUTVS®



11. Installation completed.



10. Go back to the cockpit again, unscrew the nuts of the positive and negative terminals on the terminal block, put the end of the #1 adapter wire with the copper piece of the wire, put it on the terminal block according to the position of the positive and negative terminals (corresponding to the same color wire), and then screw the nuts. Finally put back into the central storage box.

