

LED Auxiliary Light for Yamaha RMAX2/ RMAX4



ZP-YJ-031102-002

BEFORE YOU BEGIN

Read these instructions and check to be sure all parts and tools are accounted for. Please retain these installation instructions for future reference.

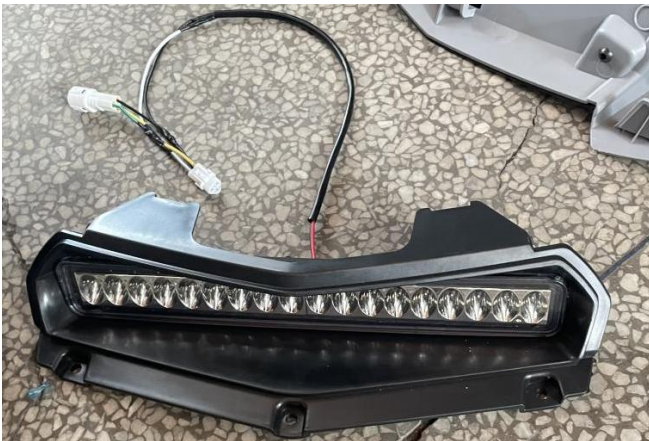
IMPORTANT

The LED Auxiliary Light is exclusively designed for your vehicle. Please read the installation instructions thoroughly before beginning. Installation is easier if the vehicle is clean and free of debris. For your safety, and to ensure a satisfactory installation, perform all installation steps correctly in the sequence shown.

INSTALLATION INSTRUCTIONS

Note: Shift vehicle transmission into "PARK". Turn key to "OFF" position and remove from vehicle.

1. Product picture



2. Remove the cover of the original vehicle, remove the decorative panel on the cover, install the auxiliary light, and fix it with screws. As shown in picture:

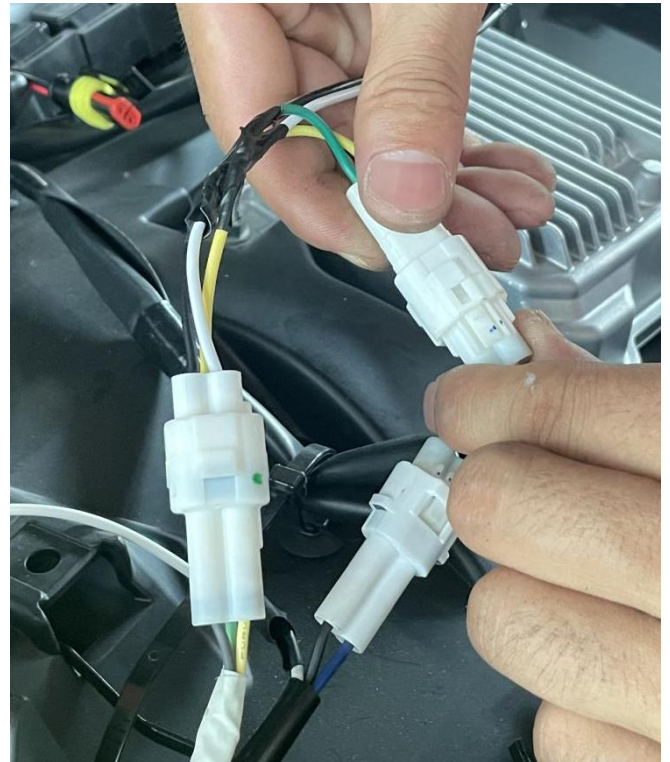
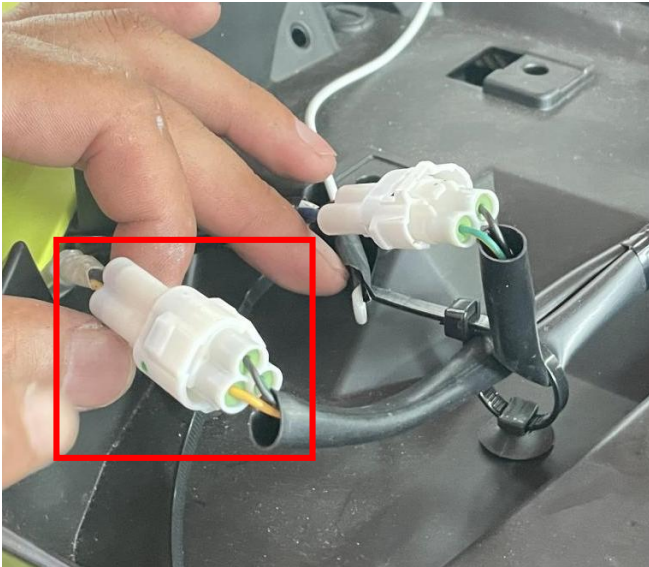


LED Auxiliary Light for Yamaha RMAX2/ RMAX4



ZP-YJ-031102-002

3. Disconnect the wiring harness plug-in of one headlamp, and connect one end of the wiring harness on the auxiliary light to the overall wiring harness plug-in, and the other end to the wiring harness plug-in on the headlamp. As shown in picture:



4. Reinstall the cover on the original vehicle. As shown in picture:



LED Auxiliary Light for Yamaha RMAX2/ RMAX4



ZP-YJ-031102-002



5. Installation finished.

