

# Rear Accent Light for Polaris RZR XP 1000



ZP-YJ-030502-029

## BEFORE YOU BEGIN

Read these instructions and check to be sure all parts and tools are accounted for. Please retain these installation instructions for future reference.

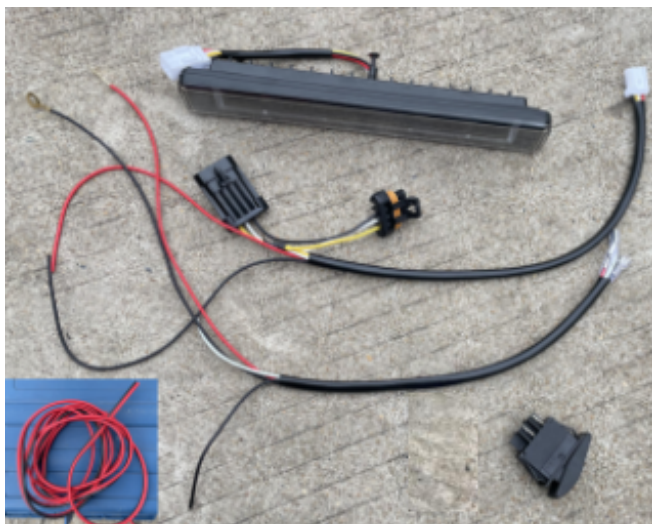
## IMPORTANT

The REAR ACCENT LIGHT KIT is exclusively designed for your vehicle. Please read the installation instructions thoroughly before beginning. Installation is easier if the vehicle is clean and free of debris. For your safety, and to ensure a satisfactory installation, perform all installation steps correctly in the sequence shown.

## INSTALLATION INSTRUCTIONS

Note: Shift vehicle transmission into "PARK". Turn key to "OFF" position and remove from vehicle.

Products and accessories.



1. Remove the instrument storage box of original vehicle, and then pry open a switch cover on the switch panel, try to install the switch and then removed. (If the switch hole is too small, you can use a utility knife to repair the hole.) As shown in figure:



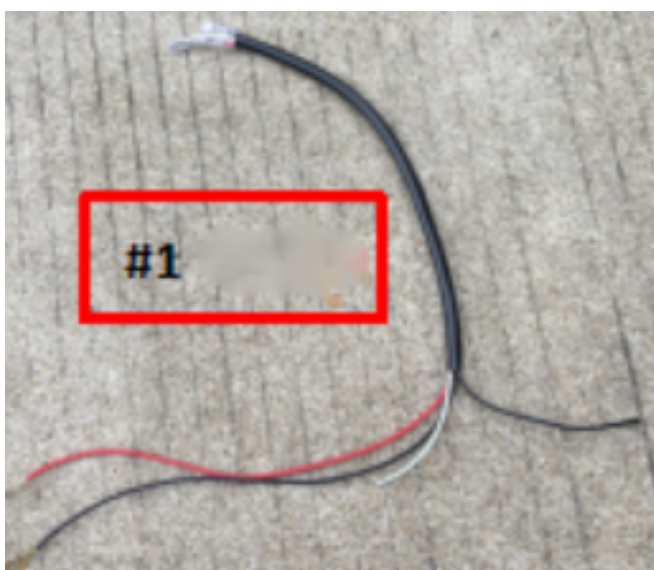
# Rear Accent Light for Polaris RZR XP 1000



ZP-YJ-030502-029



2. Prepare the No. 1 converter cable in the product, and insert the end with the transparent sheath into the switch lugs (note the wiring position). Pass the converter cable through the switch hole, and then install the switch. As shown in figure:

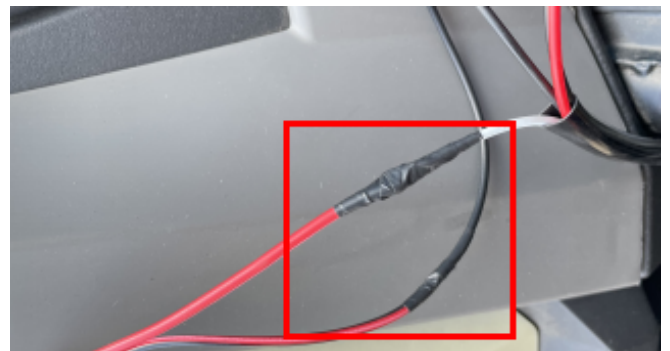
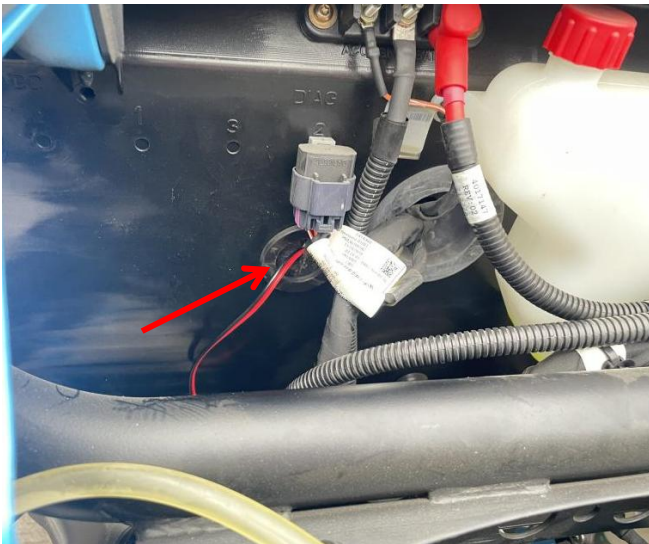
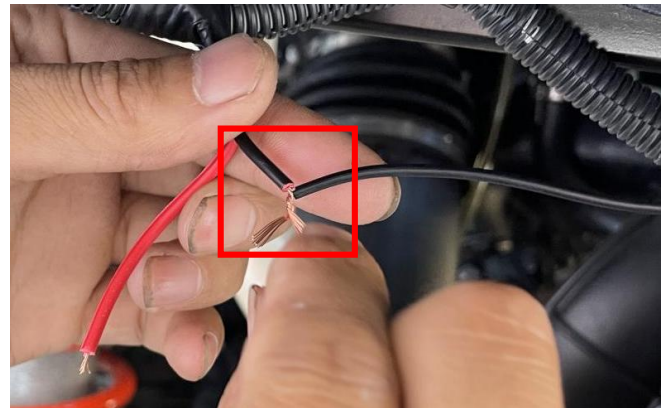


3. Open the cover of the original vehicle, get the extension cable from the accessories package and thread it through the outlet hole at the bottom of the terminal post into the vehicle, pull it to the place of the switch, and connect it with the No. 1 transfer wire (peel off the outer skin of the wiring harness joint, expose the copper wire inside, wrap the copper wire of the two wires together, and then make the insulation protection). As shown in figure:  
Note: Black wire to black wire, white wire to red wire.

# Rear Accent Light for Polaris RZR XP 1000



ZP-YJ-030502-029

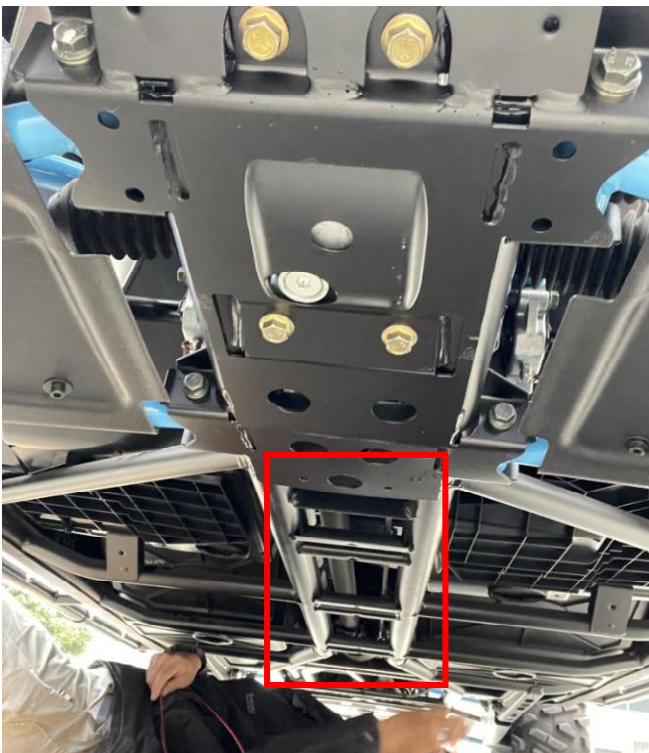


4. Extend the remaining extension cable through the gap of the vehicle body to the bottom of the vehicle. Remove the front and rear guard plates under the vehicle, and then pass the extension cable through the wire hole of the vehicle wire harness until the position of the rear wheel of the vehicle. After the wire harness was passed, the lower guard plate can be installed back. As shown in figure:

# Rear Accent Light for Polaris RZR XP 1000



ZP-YJ-030502-029

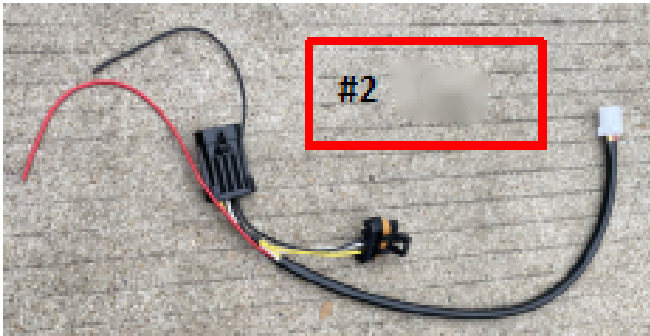


5. Connect the extension cable to the No. 2 conversion cable, using the wiring method in Step 2, and then pull the wiring harness to the rear taillight (the loose extension cable in the middle can be fixed with cable ties), disconnect the wiring harness plug-ins of the original taillight, and reconnect the taillight and the whole vehicle with the corresponding plug-ins of the conversion cable. As shown in figure:  
Note: Black wire to black wire, red wire to red wire.

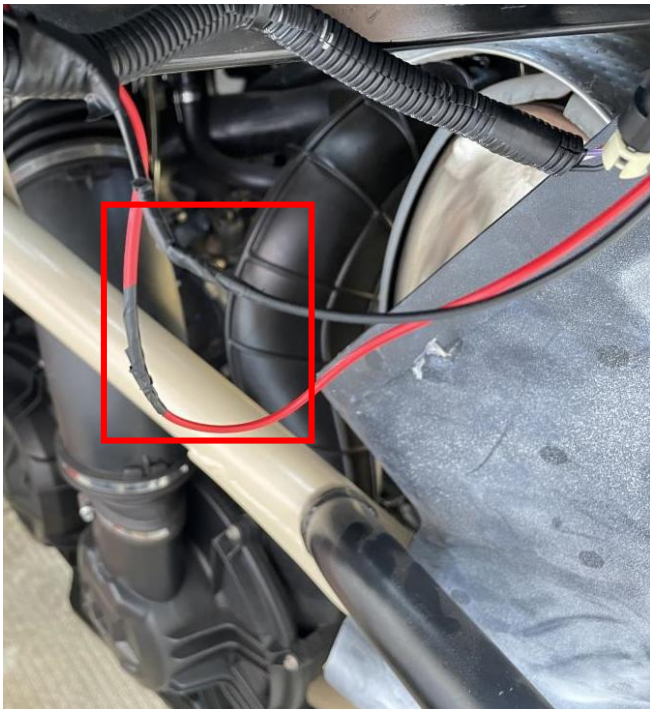
# Rear Accent Light for Polaris RZR XP 1000



ZP-YJ-030502-029



6. Connect the rear accent light harness to the No.2 conversion cable, and then place the rear accent light on the top of the rear bumper of original vehicle, and then fix the both sides of light with screws. As shown in figure:



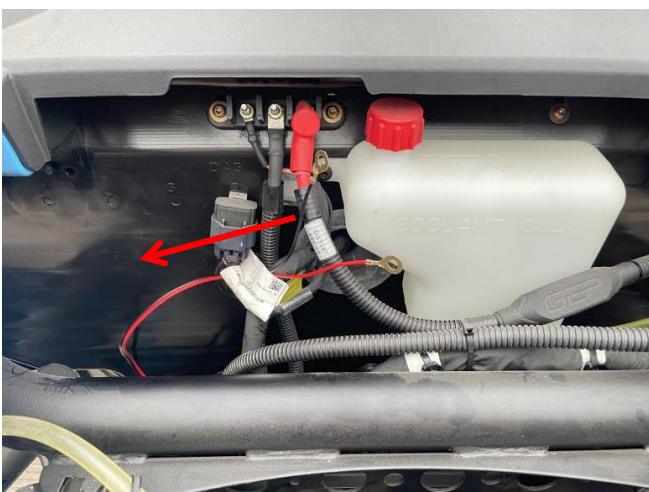
# Rear Accent Light for Polaris RZR XP 1000



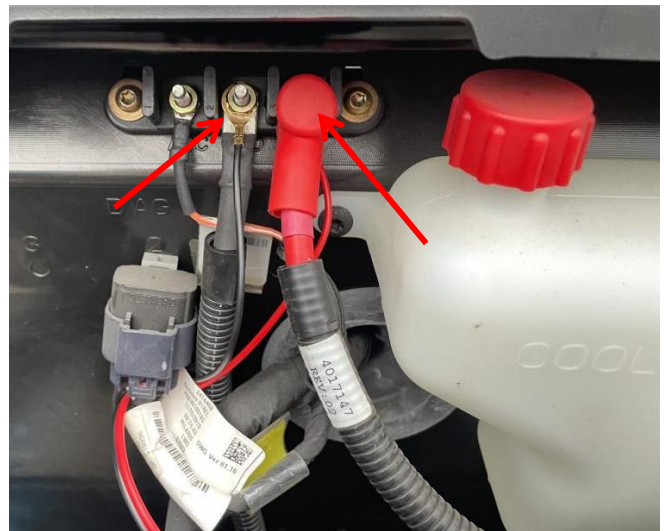
ZP-YJ-030502-029



7. After completing above steps, return to the cab, thread the No.1 conversion cable with the connection coil out of the cab to the binding post through the outlet hole, and then install the instrument storage box. As shown in figure:



8. Unscrew the nuts of the positive and negative terminals on the binding post, cover the copper pieces of the No.1 conversion cable on the binding post according to the positions of the positive and negative terminals (black wire cover the black one, red wire cover the red one), then screw the nuts, and finally reinstall the vehicle cover. As shown in figure:



9. Installation finished.

