

# Combination Roof for Polaris Ranger XP 1000

## 4 Doors



ZP-YJ-030507-020

### BEFORE YOU BEGIN

Read these instructions and check to be sure all parts and tools are accounted for. Please retain these installation instructions for future reference.

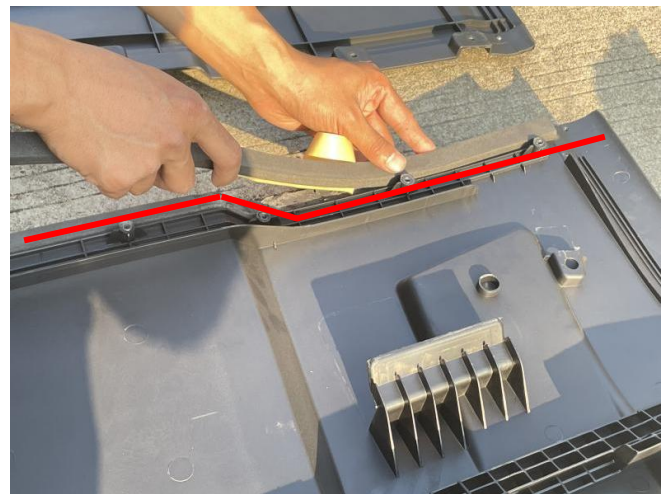
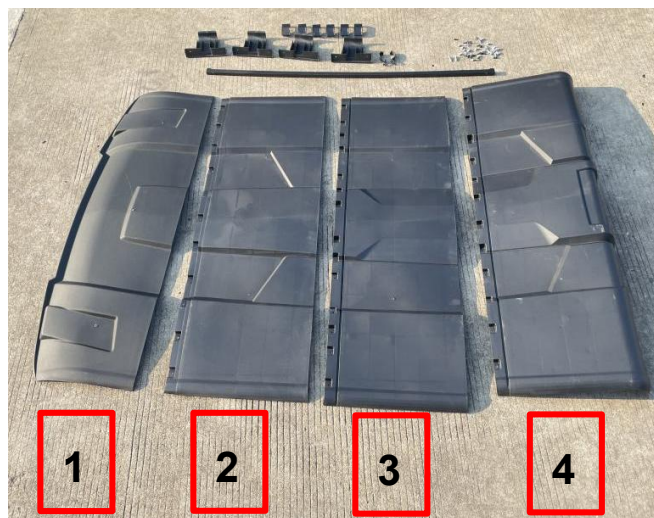
### IMPORTANT

The Roof is exclusively designed for your vehicle. Please read the installation instructions thoroughly before beginning. Installation is easier if the vehicle is clean and free of debris. For your safety, and to ensure a satisfactory installation, perform all installation steps correctly in the sequence shown.

### INSTALLATION INSTRUCTIONS

Note: Shift vehicle transmission into "PARK". Turn key to "OFF" position and remove from vehicle.

Pictures of products and accessories



1. First, get the adhesive sponge pad from the accessories package, and stick it on the edges of the four pieces of the roof (stick to the opposite edge), then assemble the separate parts together and fix them with screws. As shown in picture:

Note: When assembling, first fix Part No. 1 and No. 2, Part No. 3 and No. 4, don't screw the joint points between Part No.2 and No.3.

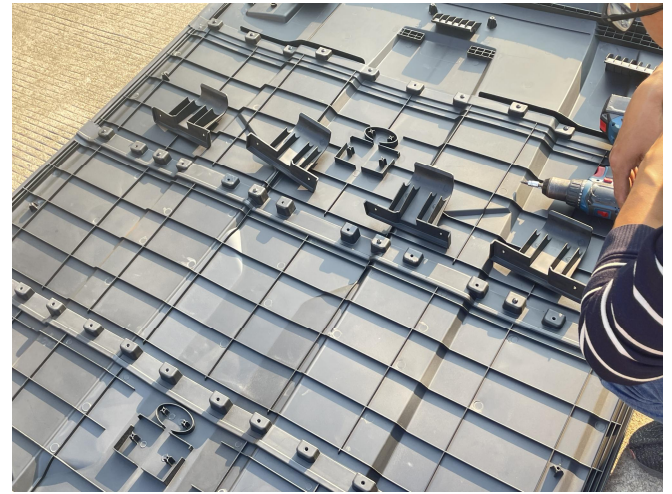
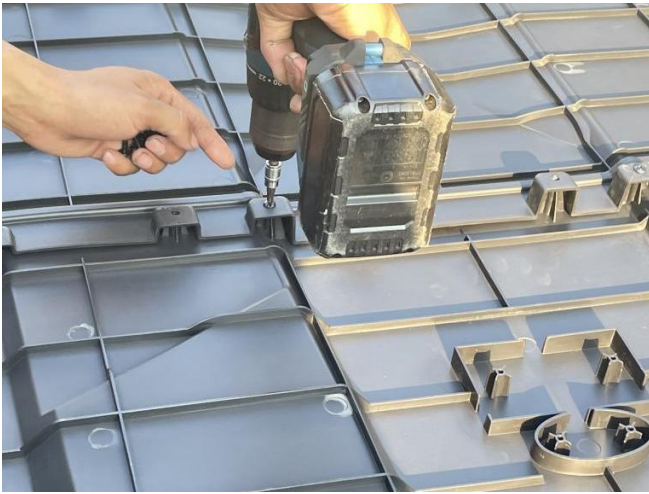


# Combination Roof for Polaris Ranger XP 1000

## 4 Doors

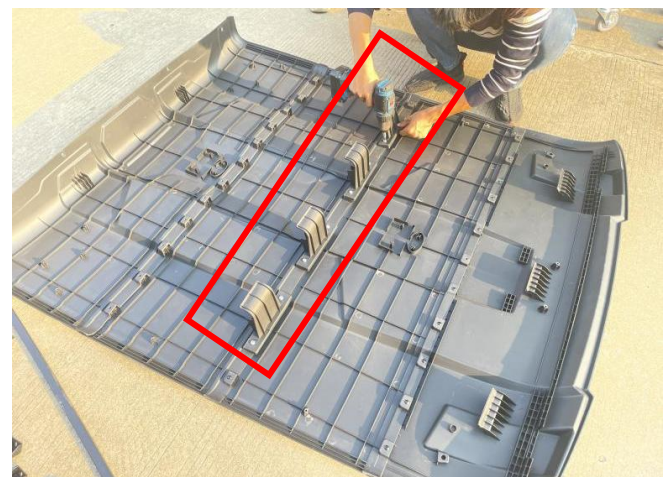


ZP-YJ-030507-020



2. Take out the 4 limit brackets in the accessories package and fix them on the No. 2 and No. 3 interface with screws, and then fix the remaining mounting holes with screws. As shown in picture:

Note: The limit bracket is oriented, and the installation position should be determined according to the concave and convex surface of the roof.



3. After completing the above steps, flip the roof to the front side, and reinforce the edges on both sides of the front side with screws, then install the roof on the original vehicle. (During installation, the 3 limit buckles on the roof need to be respectively inserted into the notch on the



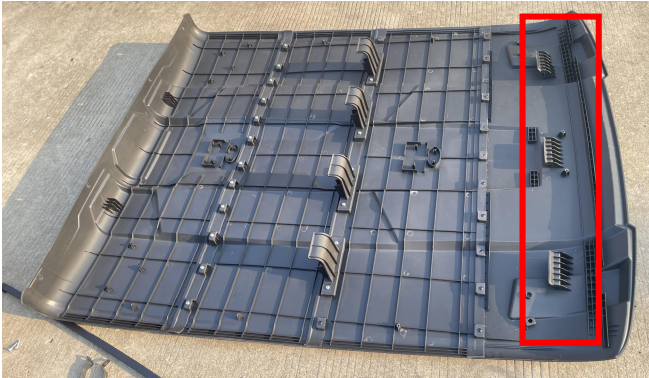
# Combination Roof for Polaris Ranger XP 1000

## 4 Doors

ZP-YJ-030507-020



top frame of the original vehicle). As shown in picture:



4. Take out the square pipe support rods from the accessories package, install the support rods on the roof of the rear seats, and secure both ends of the support rods with clamps. As shown in picture:



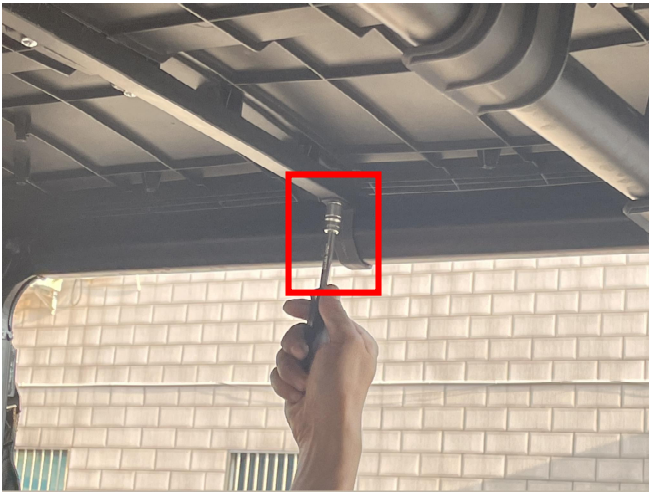


# Combination Roof for Polaris Ranger XP 1000

## 4 Doors



ZP-YJ-030507-020



5. Fix the 6 plastic supports in the product accessories along the original roof frame (one left and one right support in the front row and two left and two right supports in the back row). Finally, the tail of the roof should be fixed with screws. As shown in picture:



6. Installation finished.

