

# Door Handle Set For Can-Am Maverick X3 / X3 MAX

SAUTVS®

ZP-YJ-030603-135

## BEFORE YOU BEGIN

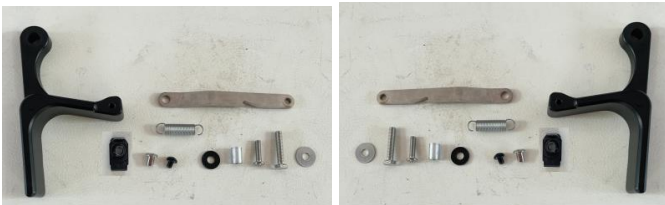
Read these instructions and check to be sure all parts and tools are accounted. Please retain these installation instructions for future reference.

## IMPORTANT

This DOOR HANDLE SET is exclusively designed for your vehicle. Please read the installation instructions thoroughly before beginning. Installation is easier if the vehicle is clean and free of debris.

## INSTALLATION INSTRUCTIONS

1. Shift vehicle transmission into "PARK". Turn key to "OFF" position and remove from vehicle.
2. Products and accessories.



3. Remove the original door handle, first unscrew the surface screws, then pry open the decorative plate, and finally use a drill bit to remove the rivets that fix the handle bar.



4. Assemble the new door handle, the first stainless steel bracket with screws fixed in the handle (bracket needs to determine the direction, the screws first do not screw too tight).

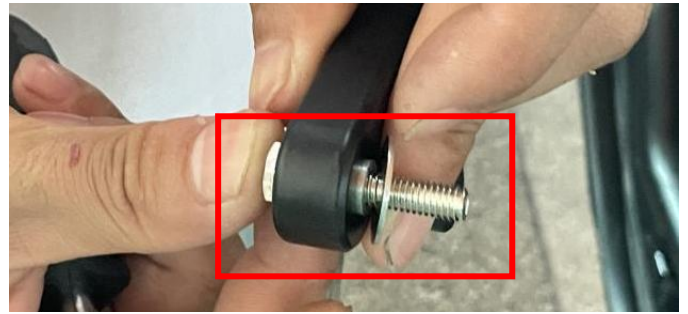
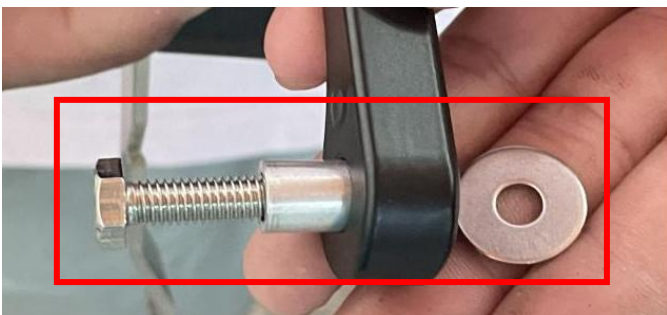


# Door Handle Set For Can-Am Maverick X3 / X3 MAX

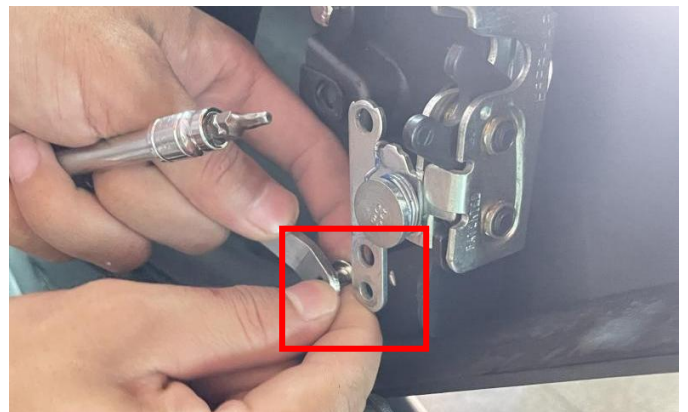
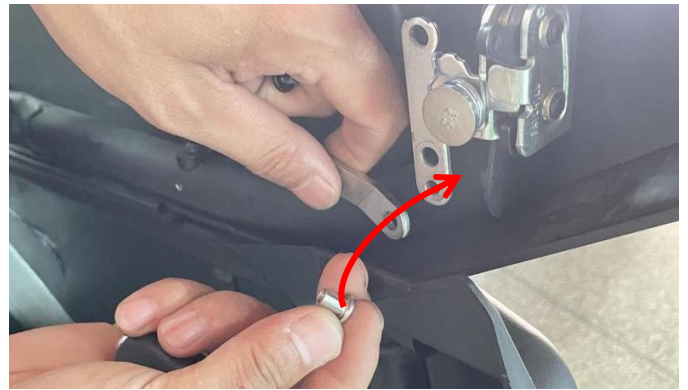
ZP-YJ-030603-135



5. Snap the steel card from the product kit to the original vehicle's handle bracket. Then fix the screws on the steel card as shown in the picture.



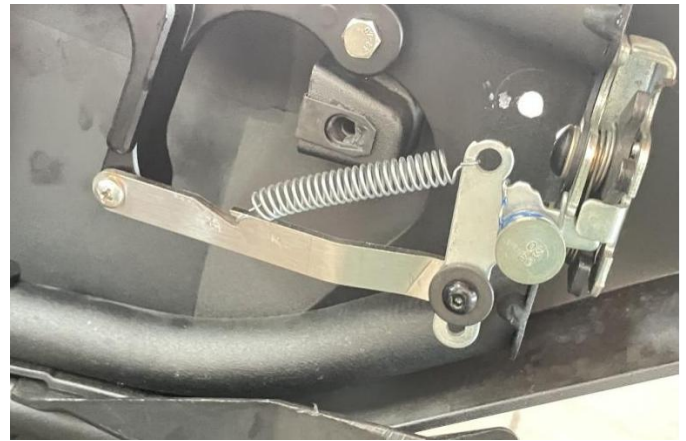
6. Use the screws to fix the stainless steel bracket with the original vehicle locking bracket together.



# Door Handle Set For Can-Am Maverick X3 / X3 MAX

ZP-YJ-030603-135

SAUTVS®



8. Installation completed.



7. Snap on the spring in the same way as the picture. (The other side of the door handle is installed according to the above steps)

