

LED License Plate Light For Can-Am Spyder

ZP-YJ-030602-031

SAUTVS®

BEFORE YOU BEGIN

Read these instructions and check to be sure all parts and tools are accounted for. Please retain these installation instructions for future reference.

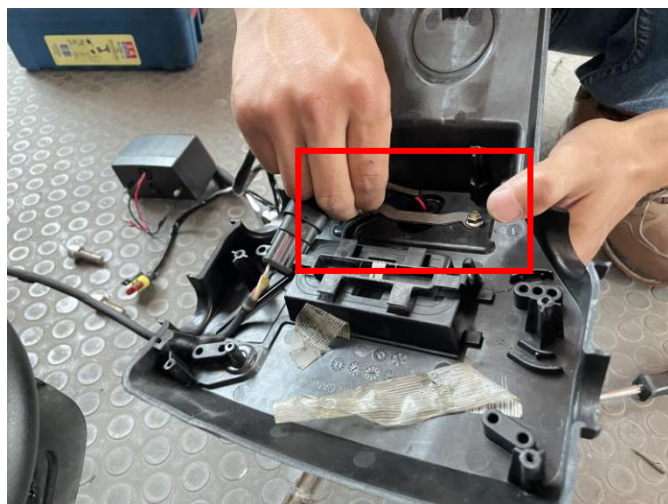
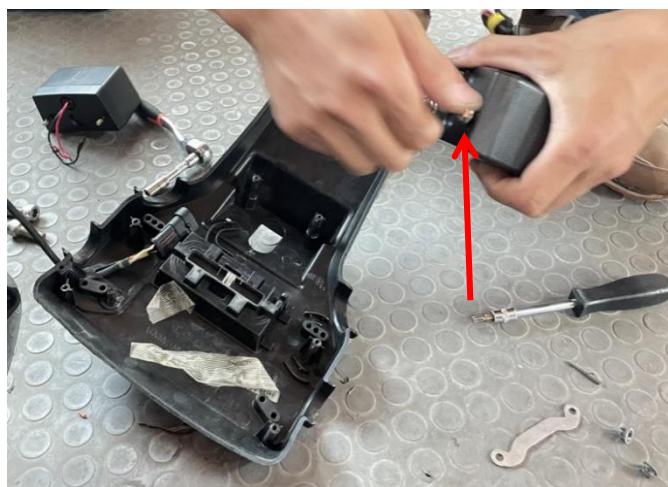
IMPORTANT

This LICENSE PLATE LIGHT KIT is exclusively designed for your vehicle. Please read the installation instructions thoroughly before beginning. Installation is easier if the vehicle is clean and free of debris.

INSTALLATION INSTRUCTIONS

1. Shift vehicle transmission into "PARK". Turn key to "OFF" position and remove from vehicle.
2. First remove the original vehicle's rear wheel fender bracket, then remove the license plate light mounting shell from the fender, remove the original vehicle license plate light, retain the original vehicle parts removed.

3. As shown in the figure, screw off the 2 nuts on the rear shell of the license lamp before installation, and put the license lamp behind the installation shell; Then, put the pressure plate removed from the original vehicle onto the screws of the rear housing of the license lamp from the reverse side of the mounting housing, and finally screw on the nuts.



LED License Plate Light For Can-Am Spyder

ZP-YJ-030602-031

SAUTVS®



4. Dock the license plate light harness with the original harness, and sort out the excess harness according to the alignment of the original license plate light harness. Then start the car and check whether the license plate light can work properly. Finally, install the license plate light mounting shell and fender back to the original vehicle.

5. Installation completed.

