

Cluster Relocator Kit For Can-Am Ryker

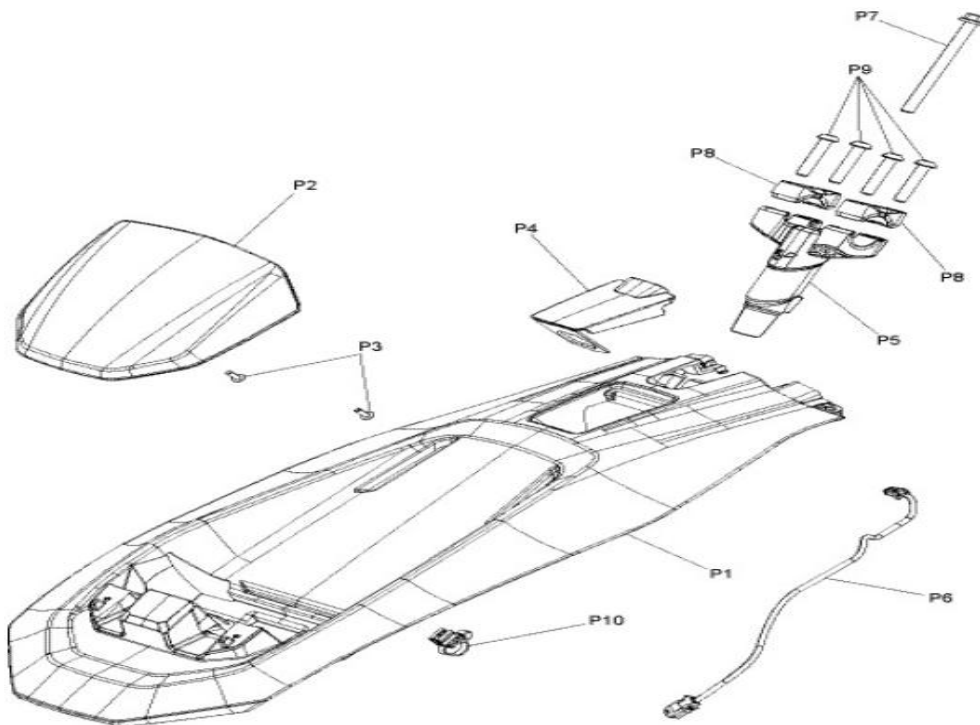
ZP-YJ-030603-109

BEFORE YOU BEGIN

Read these instructions and check to be sure all parts and tools are accounted for. Please retain these installation instructions for future reference.

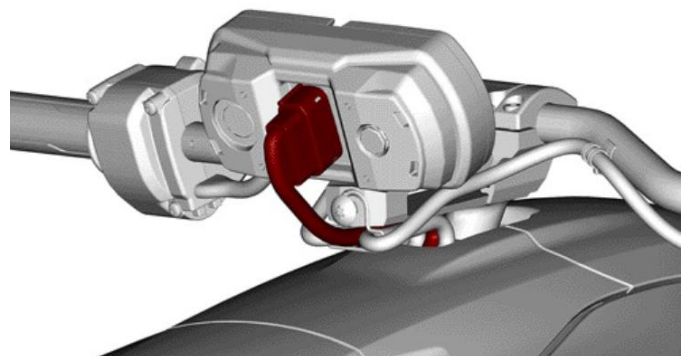
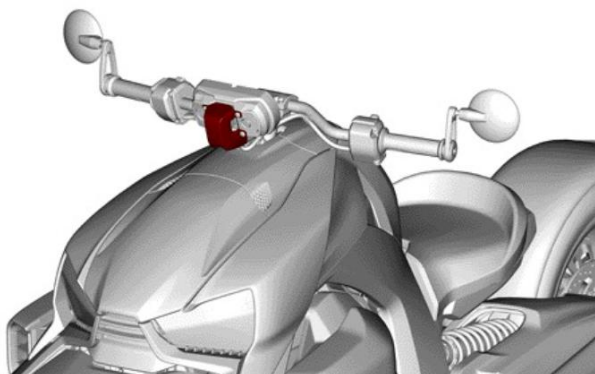
IMPORTANT

This CLUSTER RELOCATOR KIT is exclusively designed for your vehicle. Please read the installation instructions thoroughly before beginning. Installation is easier if the vehicle is clean and free of debris.



INSTALLATION INSTRUCTIONS

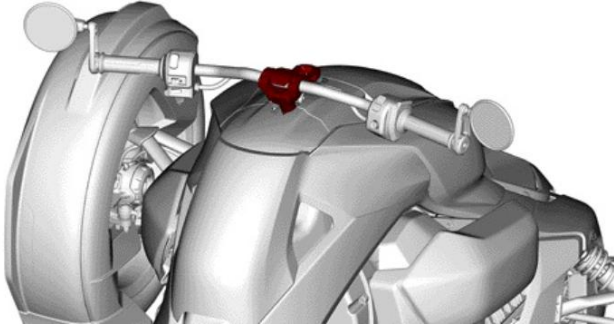
1. Shift vehicle transmission into "PARK". Turn key to "OFF" position and remove from vehicle.
2. Remove cluster support and disconnect cluster.



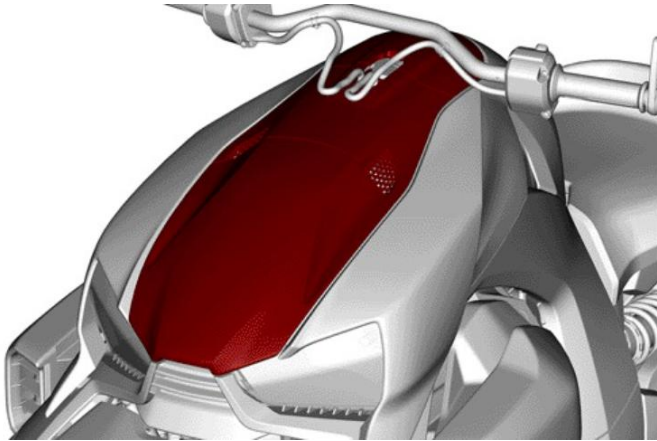
Cluster Relocator Kit For Can-Am Ryker

ZP-YJ-030603-109

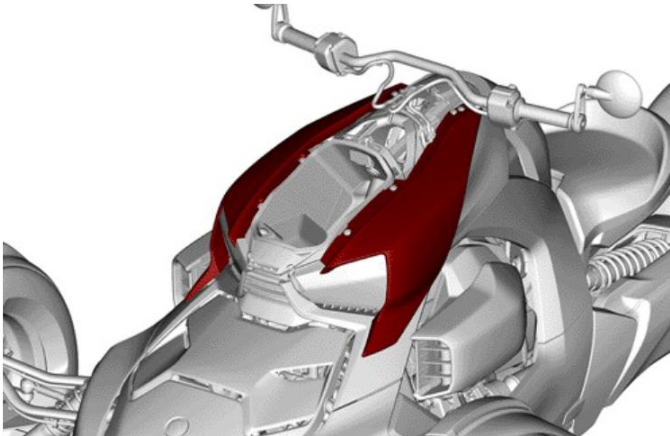
3. Remove handlebar stem and handlebar.



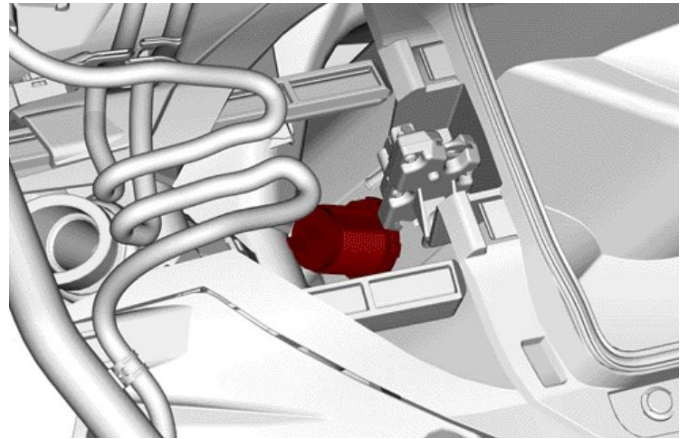
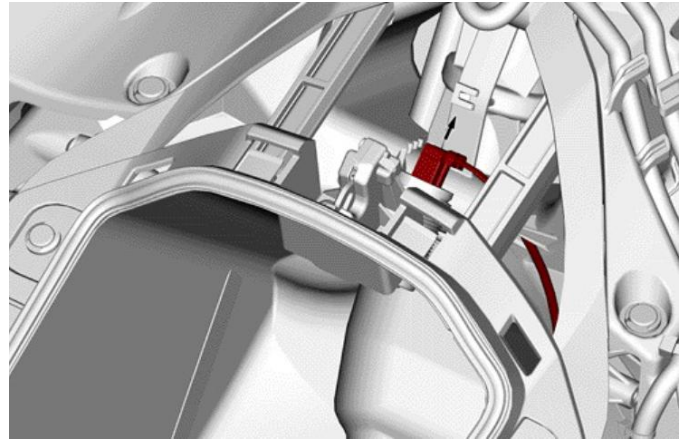
4. Remove glove box cover, upper fairing and fuel filler door.



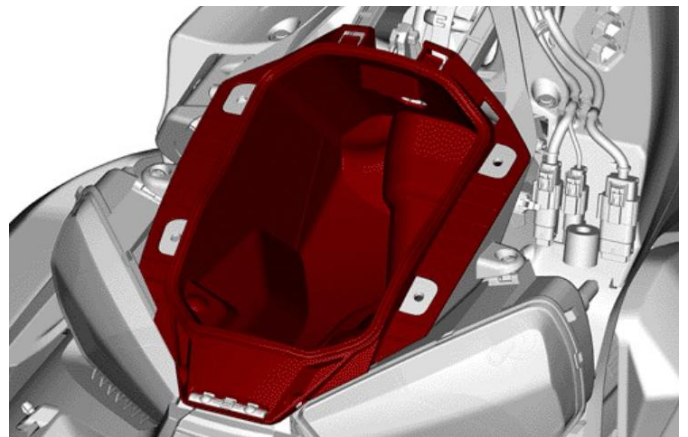
5. Remove lateral panels.



6. Disconnect the 2 connectors from the USB outlet and remove USB outlet.



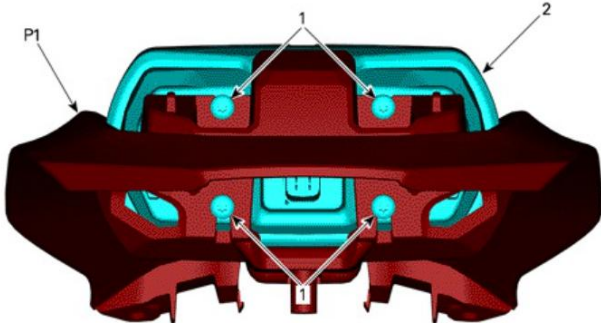
7. Remove glove box.



Cluster Relocator Kit For Can-Am Ryker

ZP-YJ-030603-109

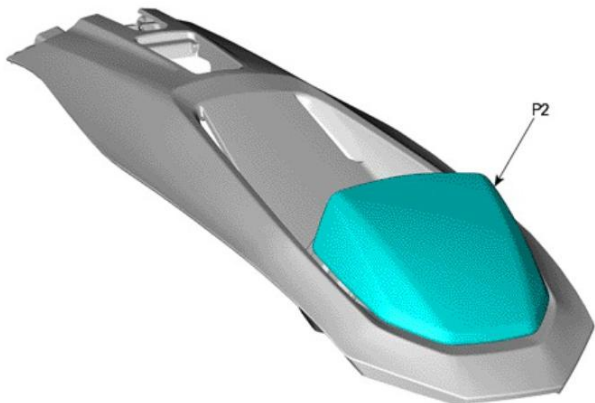
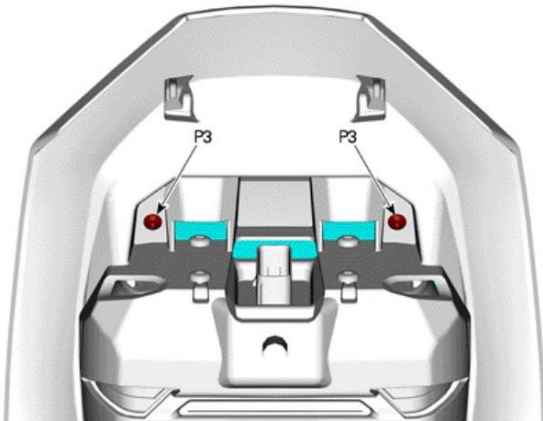
8. Install cluster on upper fairing [P1] with 4x screws. Reuse same screws that were holding the cluster support. Tighten to specification.



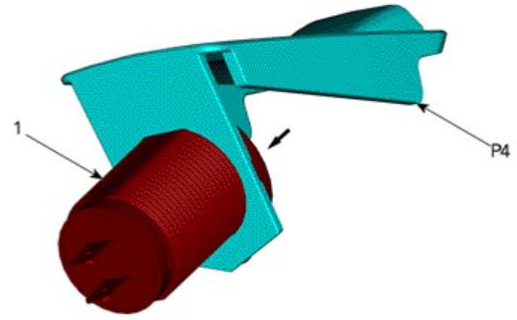
1. Screws holding the cluster

2. Cluster

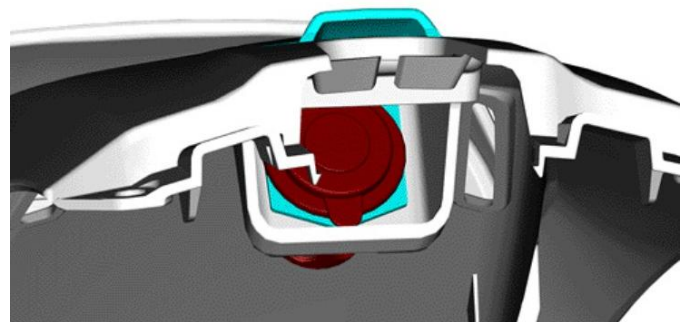
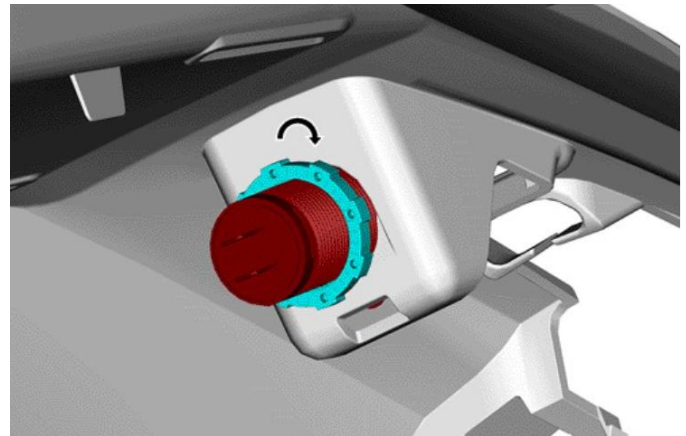
9. Install console deflector [P2] using 2x Torx screws [P3] and 2 gaskets. Tighten to specification.



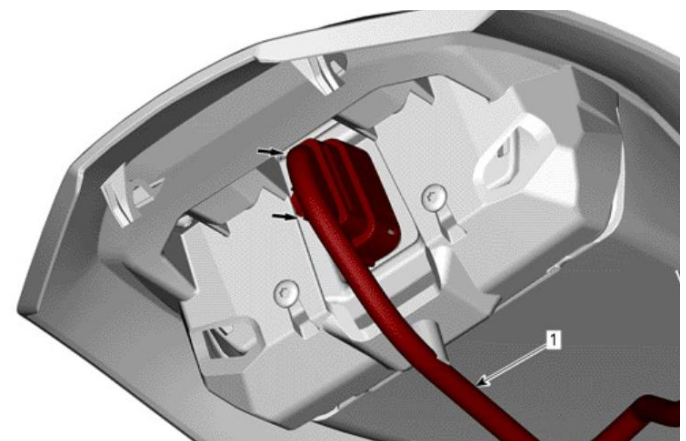
10. Insert USB outlet in the access cover [P4]. Install USB outlet and access cover on upper fairing. Turn the ring on the USB outlet clockwise and tighten by hand to secure it in place.



1. USB outlet



11. Connect cluster harness to cluster and connect USB outlet to harness. Use locking tie clip [P10] to secure cluster harness in place.

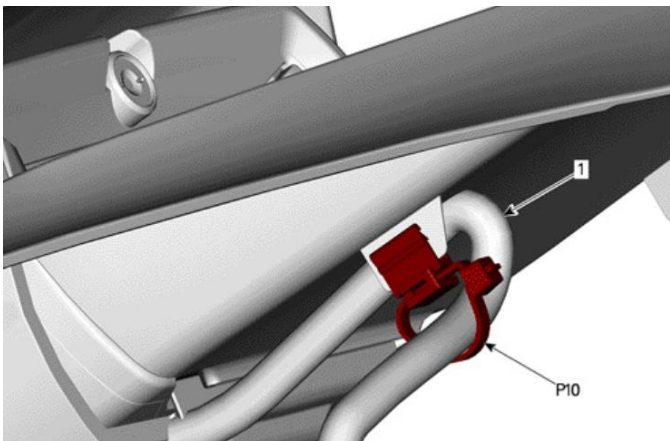


1. Cluster harness

Cluster Relocator Kit For Can-Am Ryker

ZP-YJ-030603-109

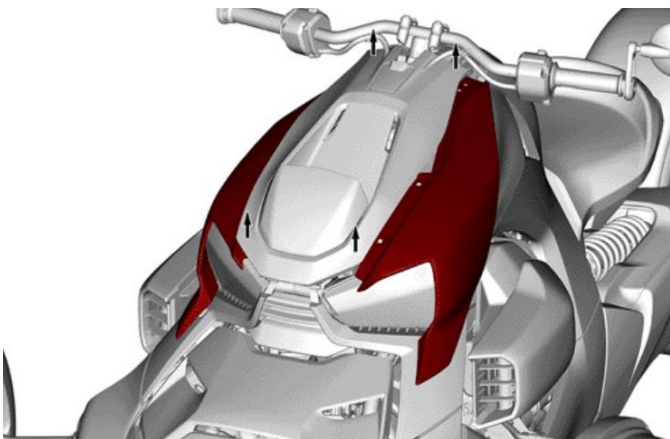
SAUTV⁵



1. Cluster harness



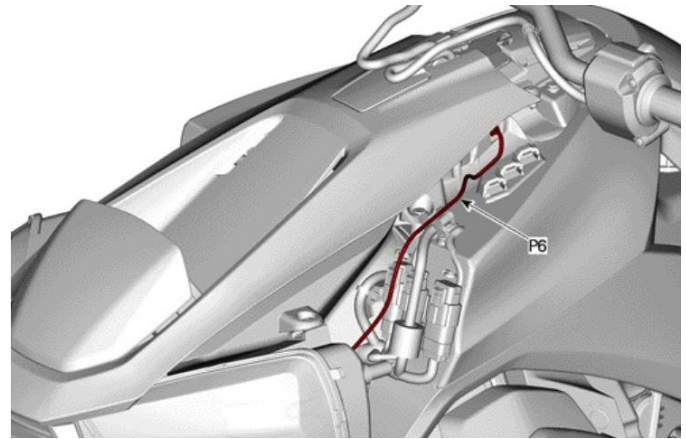
12. Reinstall previously removed lateral panels. Raise the assembly enough to install lateral panels.



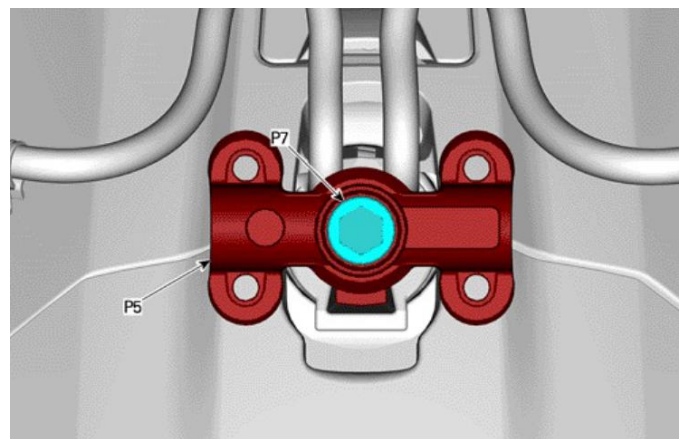
13. Clip assembly to vehicle's front pivots.



14. Install accessory wiring harness [P9] as shown below and plug it into main harness.



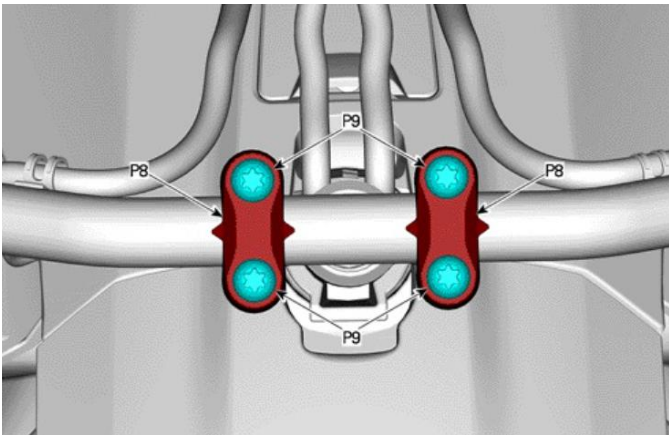
15. Install handlebar stem [P5] with the M8 X 100 screw [P7]. Tighten to specification.



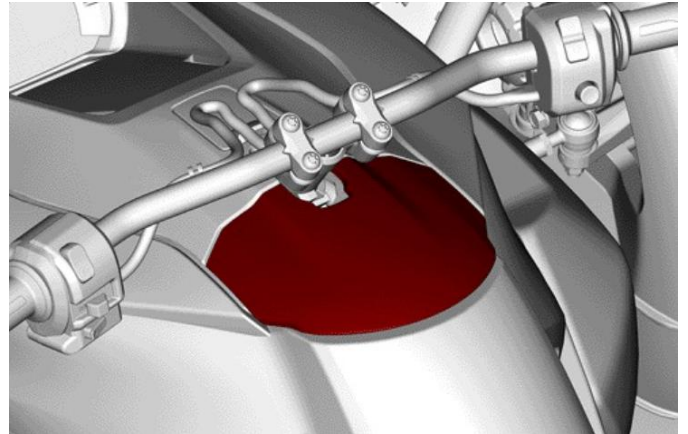
Cluster Relocator Kit For Can-Am Ryker

ZP-YJ-030603-109

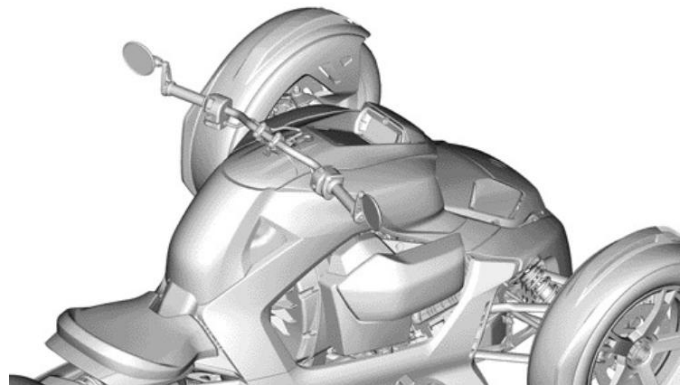
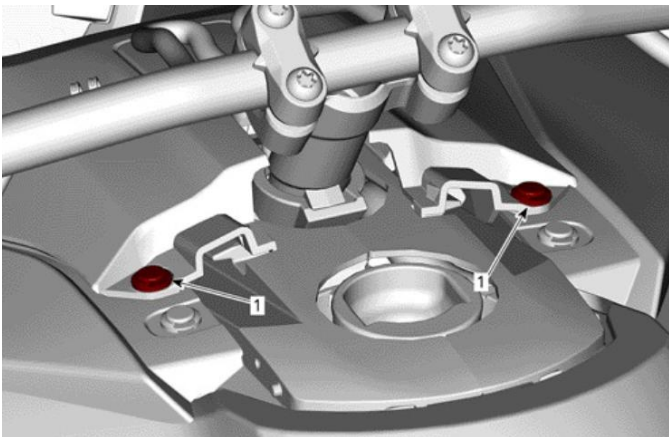
16. Install 2x handlebar supports [P8] with 4x M8 X 40 screws [P9]. Tighten to specification.



18. Slide fuel filler door into place.



17. Reinstall assembly and secure with 2x plastic rivets previously removed. Make sure to clip assembly as shown at step 12.



1. Plastic rivets