

# LED Tail Light Assembly For Ski-Doo

ZP-YJ-030602-035

SAUTV5

## BEFORE YOU BEGIN

Read these instructions and check to be sure all parts and tools are accounted. Please retain these installation instructions for future reference.

## IMPORTANT

This LED TAILLIGHT KIT is exclusively designed for your vehicle. Please read the installation instructions thoroughly before beginning. Installation is easier if the vehicle is clean and free of debris.

## INSTALLATION INSTRUCTIONS

1. Shift vehicle transmission into "PARK". Turn key to "OFF" position and remove from vehicle.  
2. First remove the rivets fixing the taillight bracket, then disconnect the wiring harness plug-in, and finally remove the taillight bracket.

3. Remove the original taillight, replace and install a new taillight.



4. Put the bracket with the new taillight back on the vehicle, then reconnect the harness plug, and finally fix the taillight bracket with new extractor rivets.

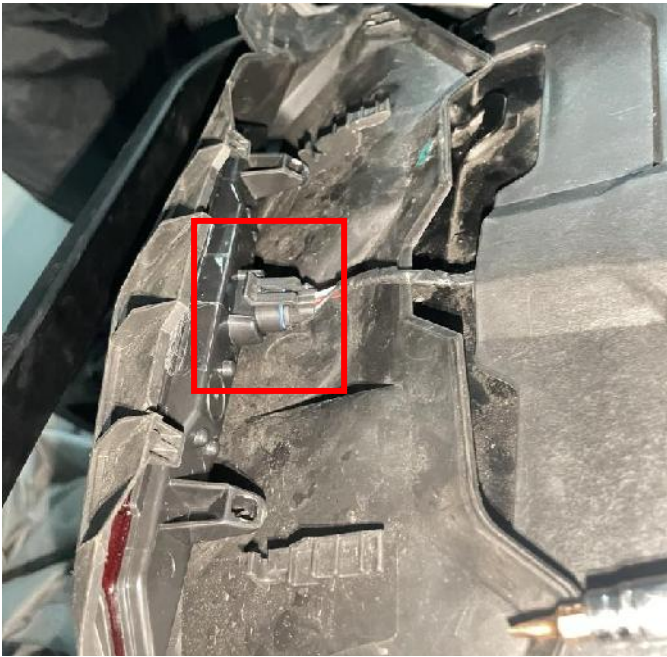
### NOTE:

1. When installing the taillight bracket, the rear hook needs to be stuck into the limit notch on the vehicle;
2. When using a rivet, a round flat pad is needed at the bottom.

# LED Tail Light Assembly For Ski-Doo

ZP-YJ-030602-035

SAUTVS®



5. Installation complete.

