

LED Headlights for Polaris Sportsman 570 850

ZP-YJ-030501-007



BEFORE YOU BEGIN

Read these instructions and check to be sure all parts and tools are accounted for. Please retain these installation instructions for future reference.

IMPORTANT

The LED Headlights are exclusively designed for your vehicle. Please read the installation instructions thoroughly before beginning. Installation is easier if the vehicle is clean and free of debris. For your safety, and to ensure a satisfactory installation, perform all installation steps correctly in the sequence shown.

INSTRUCTIONS

PART 1. Installation on Sportsman 570

1. Find the buckle in the picture and open the decorative plate of the front cover and the top cover of the high beam. As shown in figure:



2. Unplug the wiring harness of high-beam and reconnect it with the patch cord provided, as the picture shown :



3. Remove the front bumper as shown in the picture:



LED Headlights for Polaris Sportsman 570 850

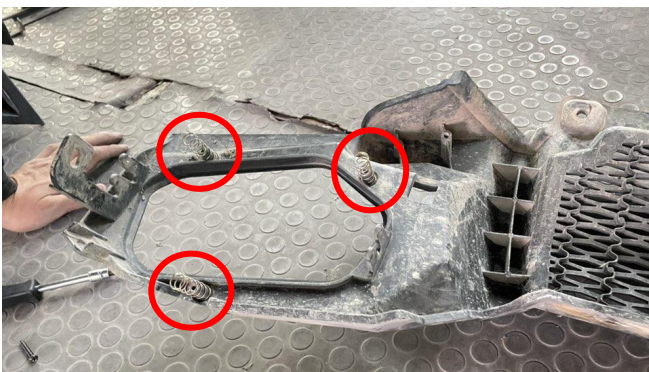


ZP-YJ-030501-007

4. Remove the original headlight on the bumper and unplug the plug-in of light wiring harness, as shown in the picture:



5. Set springs on the three screws which fix the headlights, install the new headlights as the orientation and fix them with screws, as shown in the figure:



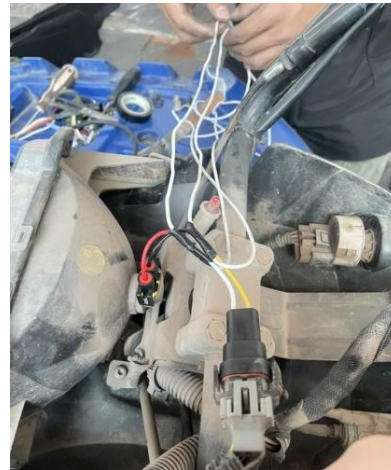
6. Pass the patch cord mentioned in above step 2 through the gap, pull it to the position of the headlight, and connect it with the plug-in on the headlight. After completion, start the vehicle and test whether the headlight can be powered on normally (the headlight on the other side can be completed as above steps 4-6), as shown in the figure:



7. After completing above steps, you can reinstall the front bumper, the machine cover and top cover of high beam, installation finished. As shown in figure:

LED Headlights for Polaris Sportsman 570 850

ZP-YJ-030501-007



2. Remove the front bumper and original lights, and remove the plug-in of light wiring harness, as shown in the picture:



PART 2. Installation on Sportsman 850

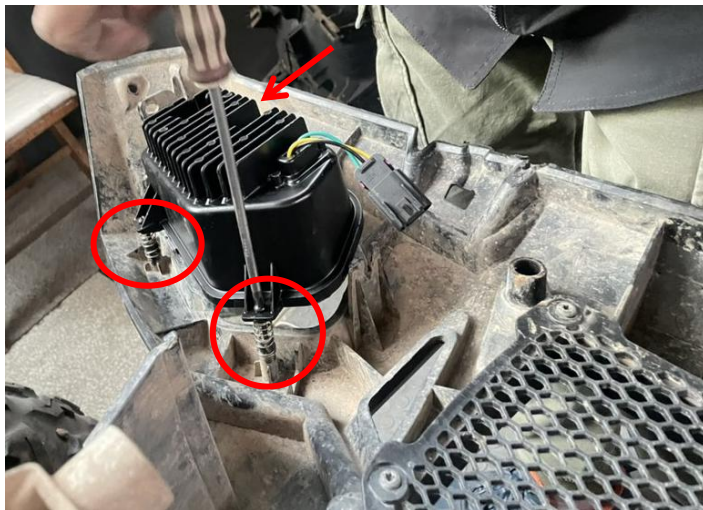
1. Open the front machine cover and the top cover of the high beam, find the wire harness of the high beam, disconnect the plug-in, reconnect with the patch cord as shown in the picture:



3. Set springs on the three screws which fixed the headlights, install the new headlights as the orientation and fix them with screws, as shown in the figure:

LED Headlights for Polaris Sportsman 570 850

ZP-YJ-030501-007



4. Pass the patch cord which connected on the high beam through the gap, pull it to the position of the headlight, and connect it with the plug-in on the headlight. After completion, start the vehicle and test whether the headlight can be powered on normally (the headlight on the other side can be completed as above steps 2-4), as shown in the figure:



5. After completing above steps, you can reinstall the front bumper, the machine cover and top cover of high beam, installation finished. As shown in figure:

