

### BEFORE YOU BEGIN

Read these instructions and check to be sure all parts and tools are accounted for. Please retain these installation instructions for future reference.

#### IMPORTANT

The ELECTRONIC DEVICE HOLDER is exclusively designed for your vehicle. Please read the installation instructions thoroughly before beginning. Installation is easier if the vehicle is clean and free of debris. For your safety, and to ensure a satisfactory installation, perform all installation steps correctly in the sequence shown.

#### INSTRUCTIONS

Note: Shift vehicle transmission into "PARK". Turn key to "OFF" position and remove from vehicle.

1. Remove the original lid of the storage box, pry out the two nylon buckles on the side for later use, and then wipe up the whole surface of the box, as shown in the picture:



2. There is a circle of double-sided adhesive at the bottom of the device holder, tear off the release paper on the adhesive, attach the device holder to the box body, and press it slightly to make them fit better. Then press

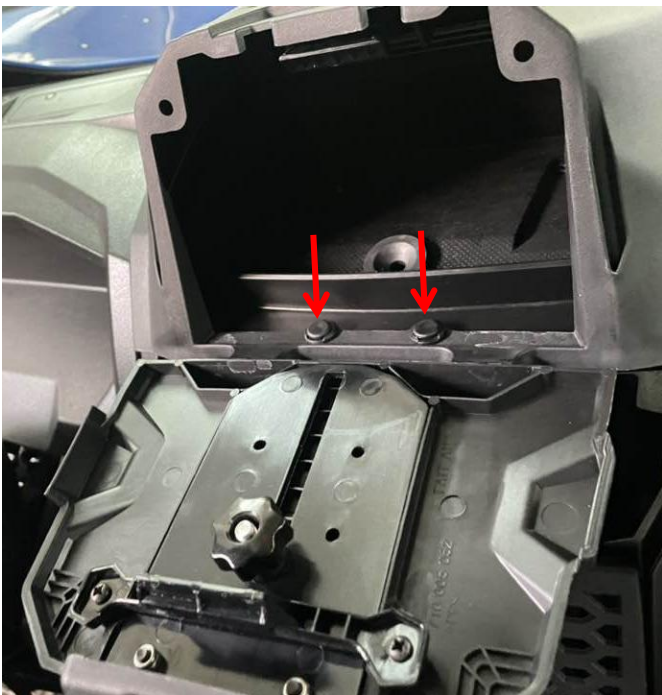
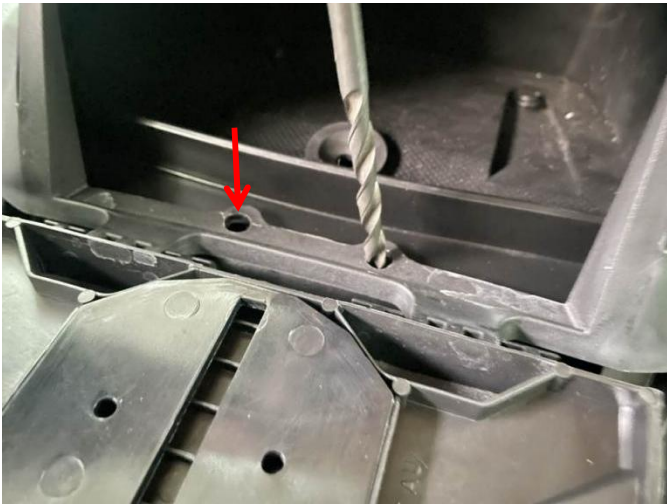
back the nylon buckles.



3. Open the cover of the device holder, drill two holes in the marked place with an 8MM drill bit, and then press the nylon buckles, as shown in the picture:

# Device Holder for Kawasaki Teryx 1000 2020+

ZP-YJ-031008-004



4. Installation finished.