

Headlight Housings for Polaris Sportsman 500



ZP-YJ-030501-014

BEFORE YOU BEGIN

Read these instructions and check to be sure all parts and tools are accounted for. Please retain these installation instructions for future reference.

IMPORTANT

The Headlight Housings are exclusively designed for your vehicle. Please read the installation instructions thoroughly before beginning. Installation is easier if the vehicle is clean and free of debris. For your safety, and to ensure a satisfactory installation, perform all installation steps correctly in the sequence shown.

INSTALLATION INSTRUCTIONS

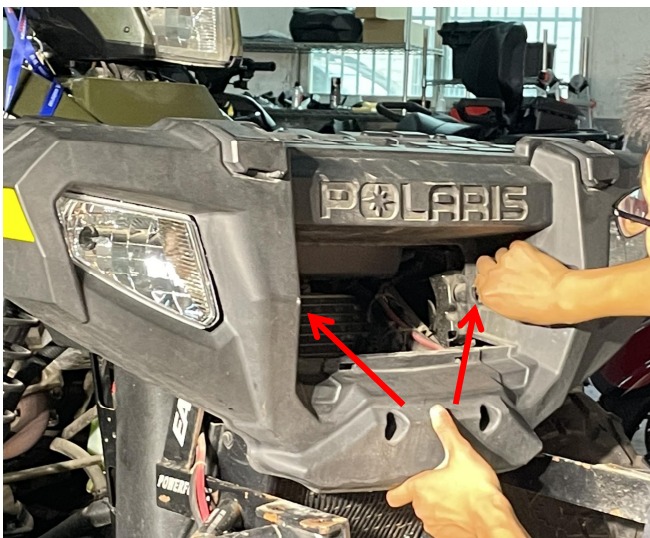
Note: Shift vehicle transmission into "PARK". Turn key to "OFF" position and remove from vehicle.

Product picture



INSTALLATION

1. First remove the front bar of the original vehicle and disconnect the wiring harness plug-ins of the original headlights. As shown in picture:

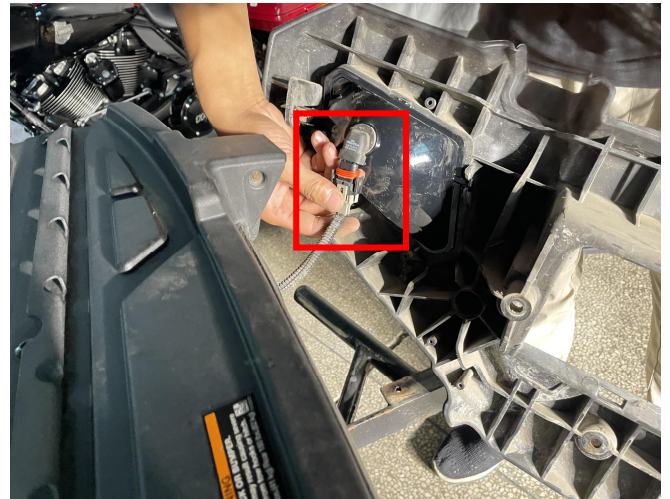


2. Remove the original headlights on the front bar, move the steel clip and bulb on the original headlight to the new headlight, and then install it back on the front bar and fix it with screws. (The headlight on other side is installed in the same way). As shown in picture:

Headlight Housings for Polaris Sportsman 500

ZP-YJ-030501-014

3. Put the front bar and other accessories back on the original vehicle (connect the wiring harness plug-ins of headlights before fixing). As shown in picture:



Headlight Housings for Polaris Sportsman 500

ZP-YJ-030501-014

SAUTV5[®]

4. Installation finished.

