

FRONT BUMPER FOR KAWASAKI TERYX KRX 1000

ZP-YJ-031006-002



BEFORE YOU BEGIN

Read these instructions and check to be sure all parts and tools are accounted for. Please retain these installation instructions for future reference.

IMPORTANT

The Front Bumper Kit is exclusively designed for your vehicle. Please read the installation instructions thoroughly before beginning. Installation is easier if the vehicle is clean and free of debris. For your safety, and to ensure a satisfactory installation, perform all installation steps correctly in the sequence shown.

INSTRUCTIONS

ASSEMBLY

1. Shift vehicle transmission into "PARK". Turn key to "OFF" position and remove from vehicle.



2. Assemble parts 1, 2 and 3 together with two M8*55 hexagon socket screws and two M8 locknuts to form the upper part of the bumper.



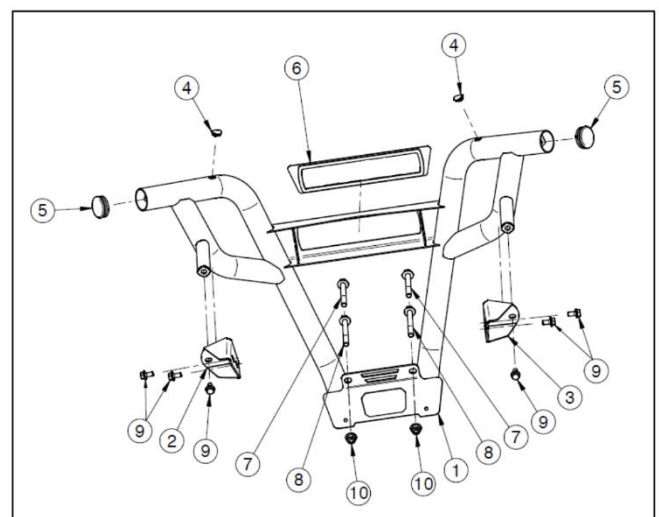
3. Assemble parts 5 and the upper part of the bumper together with four M8*55

hexagon socket screws, four M8 locknuts and two parts.



INSTALLATION INSTRUCTIONS

1. Parts List



FRONT BUMPER FOR KAWASAKI TERYX KRX 1000

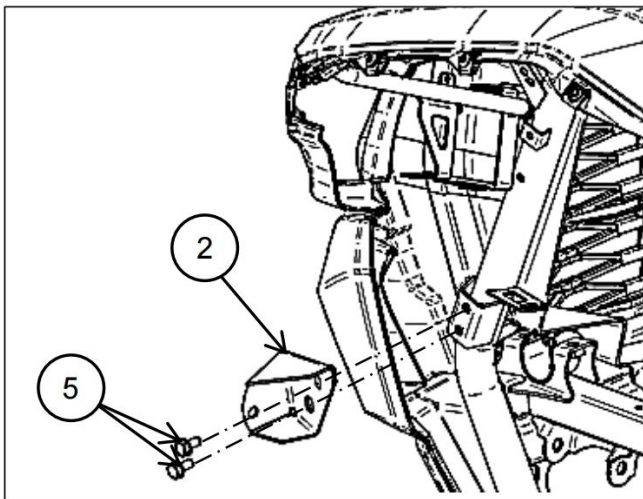
ZP-YJ-031006-002



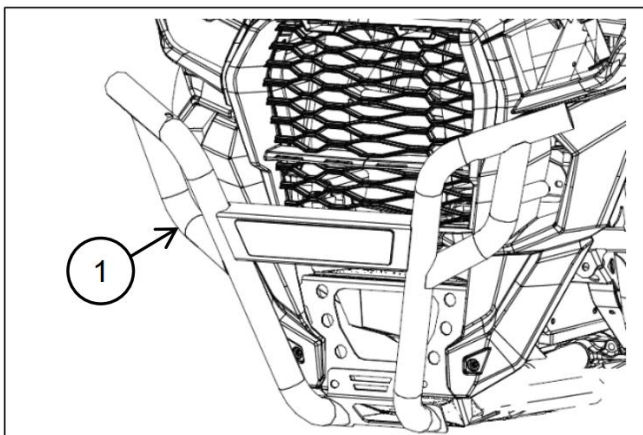
Parts List		
No.	Component Name	Qty
1	Front Bumper	1
2	Left Mounting Bracket	1
3	Right Mounting Bracket	1
4	Plastic Cap for M8 Threaded Hole	2
5	Plastic End Cap	2
6	Front Cap	1
7	Hex Flanged Bolt M10 x 70	2
8	Hex Flanged Bolt M10 x 80	2
9	Hex Flanged Bolt M8 x 16	6
10	Hex Flanged Nylon Nut M10	2

2. Install the left mounting bracket (2) and the right mounting bracket (3) to the vehicle frame brackets using four M8 x 16 hex bolts (9). Leave loose until final step. (Only the left side is shown on the picture)

NOTE: If you want to install a LED light bar (99994-1307) in the bumper, remove the front cap (6) and install the light bar before installing the bumper on the vehicle.

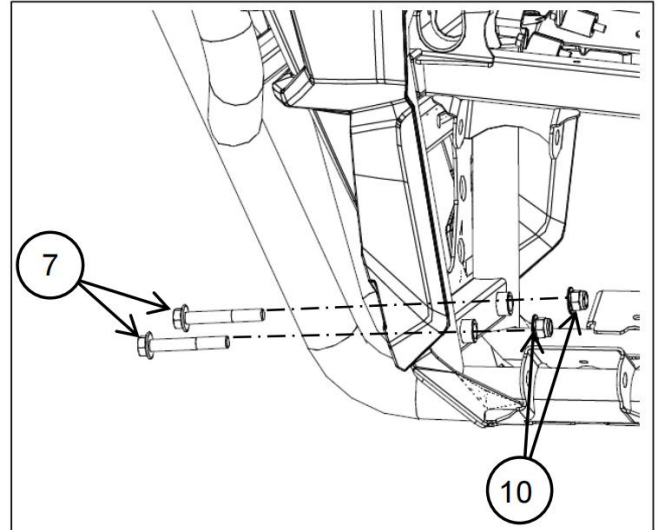


3. Place the front bumper (1) into position. Line up the holes with the mounting points of the vehicle and the brackets (2)(3) installed in the previous step.

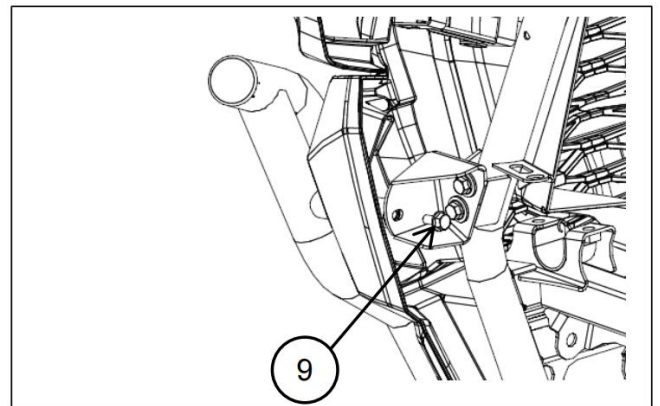


4. Install the two M10 x 70 bolts (7) and two M10 nuts (10) at the bottom of the bumper. Finger tighten only.

NOTE: If you have the winch mount installed, use two M10 x 80 (8) bolts instead of the two M10 x 70 bolts (7)



5. Screw the two remaining M8 x 16 bolts (9) through the mounting brackets (2)(3) installed previously and into the front bumper (1). Finger tighten only. (Only the left side is shown on the picture)



6. Tighten all the bolts. Starting with the bottom bolts.