

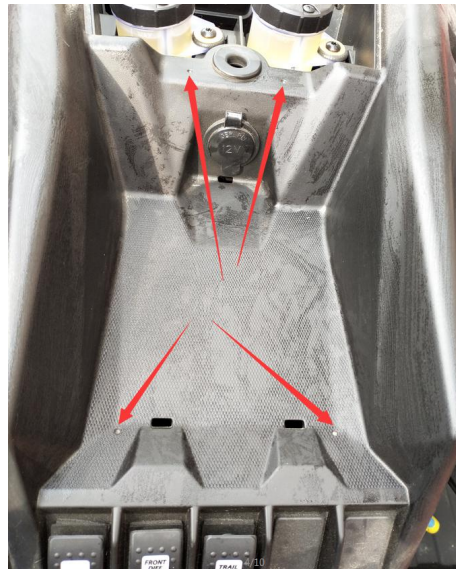
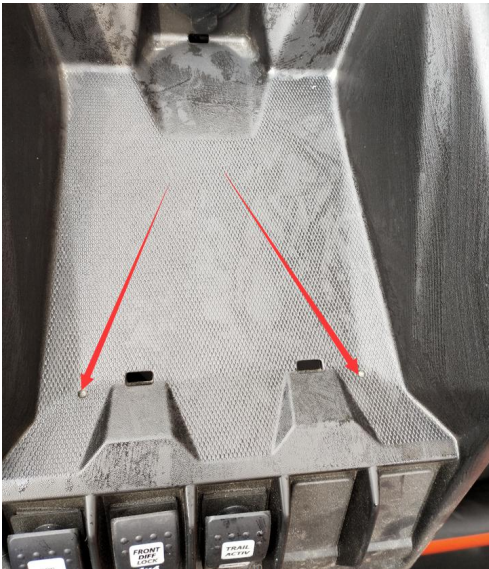
- 1** Open the cover plate of the middle of the instrument panel.



- 2** There are 2 anchor points under the cover plate, find them for subsequent steps to use.



- 3** Find 2 anchor points near the middle of rocker switch of the instrument panel for subsequent steps to use.



- 4** Place this holder on the instrument panel, align the 4 mounting holes on the panel with the anchor points found in step 2 & 3.



- 6** Cover the plate opened in the step 1 and install it.



- 5** Use the 5x40 self-tapping screws and flat pads in the package, and fix the electronic device holder on the instrument panel.

