

# Honda Talon Front Fender Extension Installation

Included	Front Fenders	XL Front Fenders
	(2) Front Fenders (22) Plastic Rivets	(2) Front XL Fenders (6) 30mm Bolts (6) Lock-nuts (22) Plastic Rivets (6) Washers (4) 1/2" Spacers (2) 5/8" Spacers

- 1) Place the front fender extension against the inside of the factory front fender. Align the inside of the fender extension to the contour of the inner factory fender (see the white dotted line in **Figure 1**).
- 2) Using a 9/32" drill bit, Carefully drill the required holes using the holes in the fender extension as template. Insert a plastic rivet into each hole immediately after drilling.

\*Note: It is possible to use hardware instead of plastic rivets. We like using the factory rivets because they will 'give' upon impact. However, you can separate the front fender by removing the rivets circled in **RED**. This will allow you to insert a washer and a lock-nut on the backside to secure the fender extension with bolts.



Figure 1

## Upper Front Fender Installation (XL ONLY)

- 3) Place the upper section of the XL front fender extension against the inside of the factory front fender. This section of the front extension is slightly adjustable and can be installed in or out depending on your preference (See **Figure 2**).
- 4) After deciding how much coverage you want, carefully drill the required holes from underneath the wheel-well using a 1/4" drill bit (use the holes in the fender extension as template or make new holes to suit your needs).
- 5) Insert a 30mm bolt into the front hole circled in **RED**, followed by a 1/2" spacer between the factory fender and the extension, then secure the bolt with a washer and a lock-nut on the bottom.
- 6) Insert a 30mm bolt into the front hole circled in **WHITE**, followed by a 5/8" spacer between the factory fender and the extension, then secure the bolt with a washer and a lock-nut on the bottom.
- 7) Insert a 30mm bolt into the front hole circled in **BLUE**, followed by a 1/2" spacer between the factory fender and the extension, then secure the bolt with a washer and a lock-nut on the bottom.

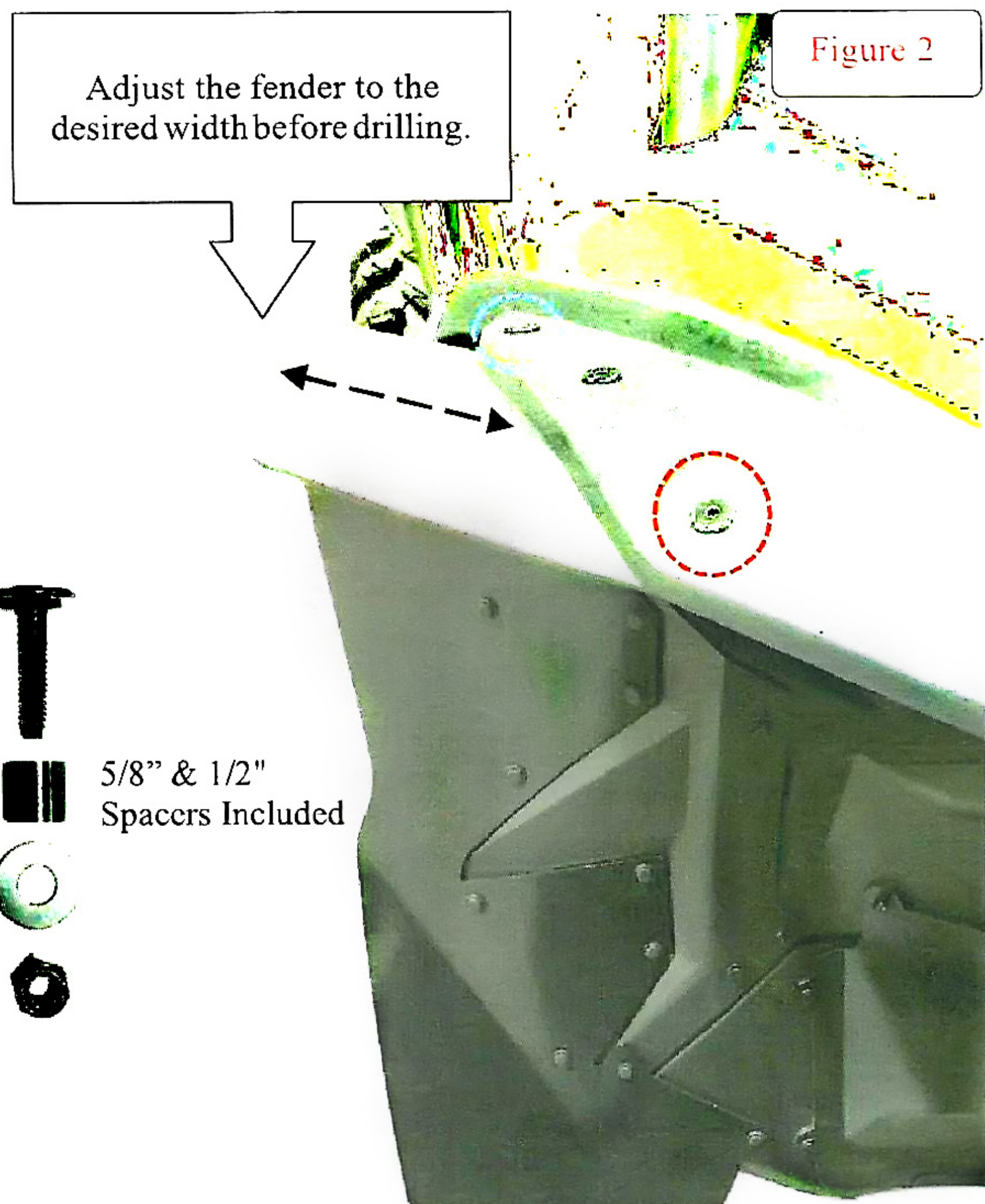


Figure 2



# Honda Talon Rear Fender Extension Installation

Included  Rear Fender Kit	(2) Rear Fenders (12) 20mm Bolts (4) 40mm Bolts (4) 1.5" Brackets
	(2) Plastic Rivets (6) 25mm Bolts (12) Washers (2) 2" Brackets (8) U-nuts (2) 30mm Bolts (16) Lock-nuts (2) 5/8" Spacers (4) 7/8" Spacers

- 1) Remove the plastic rivets located above the rear brake lights (1 per side).
- 2) Slip the cut-out section located in the rear of the fender extension around the brake light and rear fascia as shown in Figure 3.
- 3) Place the rear of the fender against the body and insert a plastic rivet as circled in Figure 3.
- 4) With the rear fender extension pressed firmly against the body, carefully drill the middle hole from underneath with a 1/4" drill bit. Figure 4.
- 5) Insert (1) 40mm bolt with a large 7/8" spacer between the factory fender and the fender extension. Then add (1) washer and (1) lock-nut finger tight.
- 6) Proceed to bolt #2 in Figure 4. Insert (1) 30mm bolt with a 5/8" spacer between the factory fender and the fender extension. Then add (1) washer and (1) lock-nut finger tight.
- 7) Proceed to bolt #3 in Figure 4. Insert (1) 40mm bolt with a large 7/8" spacer between the factory fender and the fender extension. Then add (1) washer and (1) lock-nut finger tight.

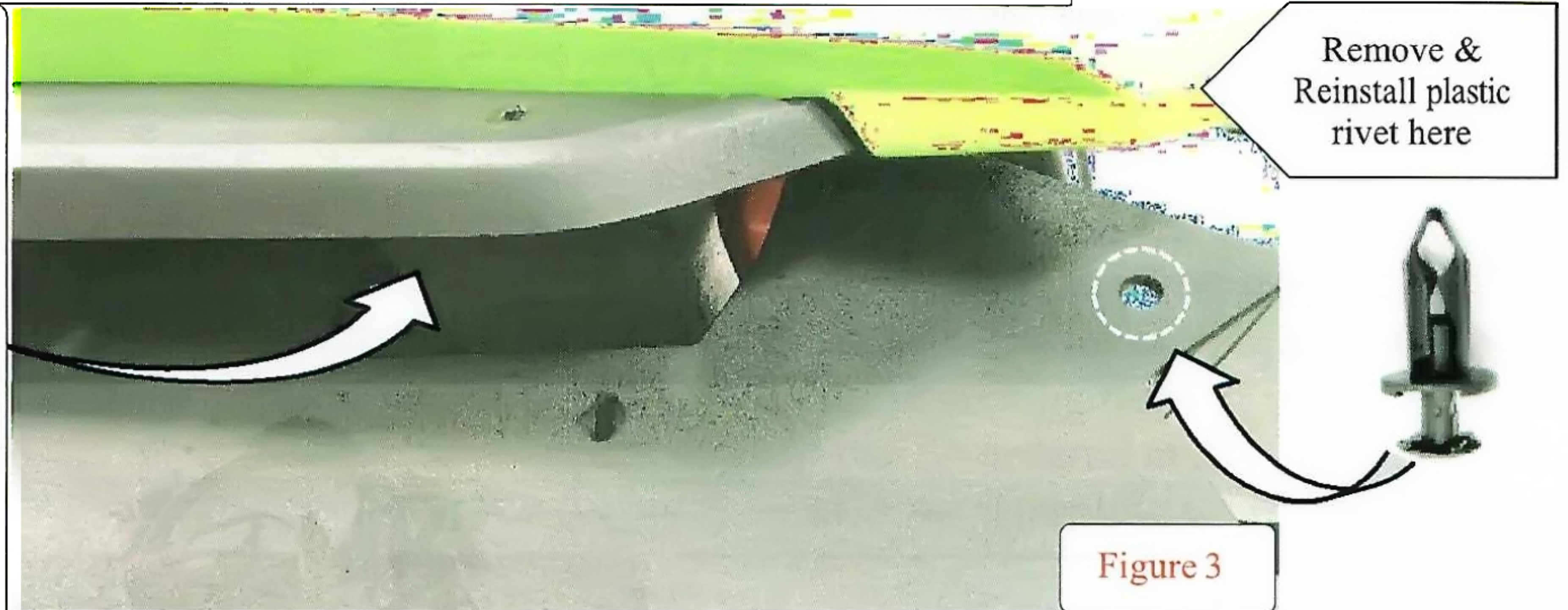


Figure 3

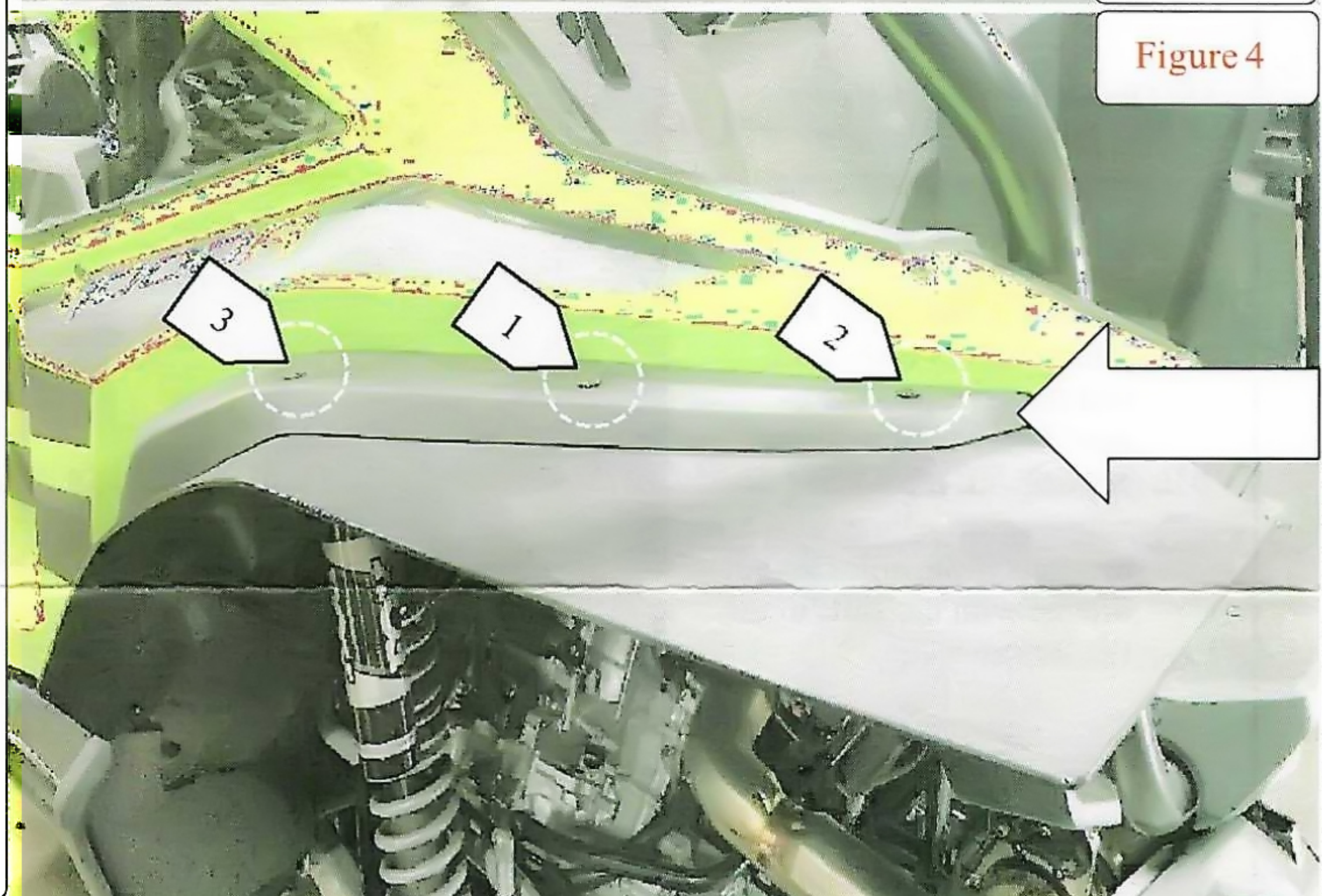


Figure 4

**Hardware Placement**

- 8) Remove the plastic rivets as shown in Figure 5.
- 9) Add U-nuts to the 2" and 1.5" brackets (Figure 6).

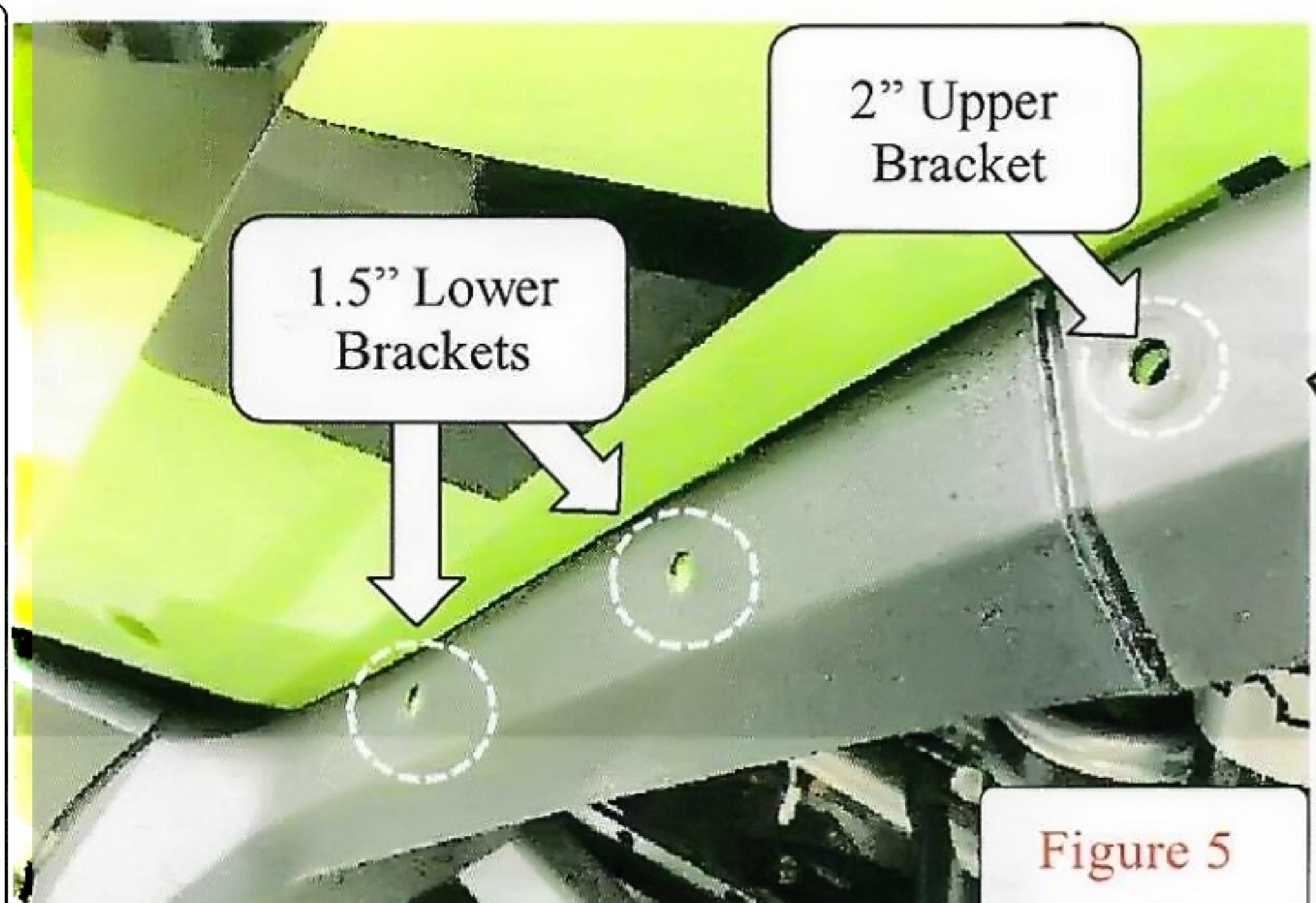


Figure 5

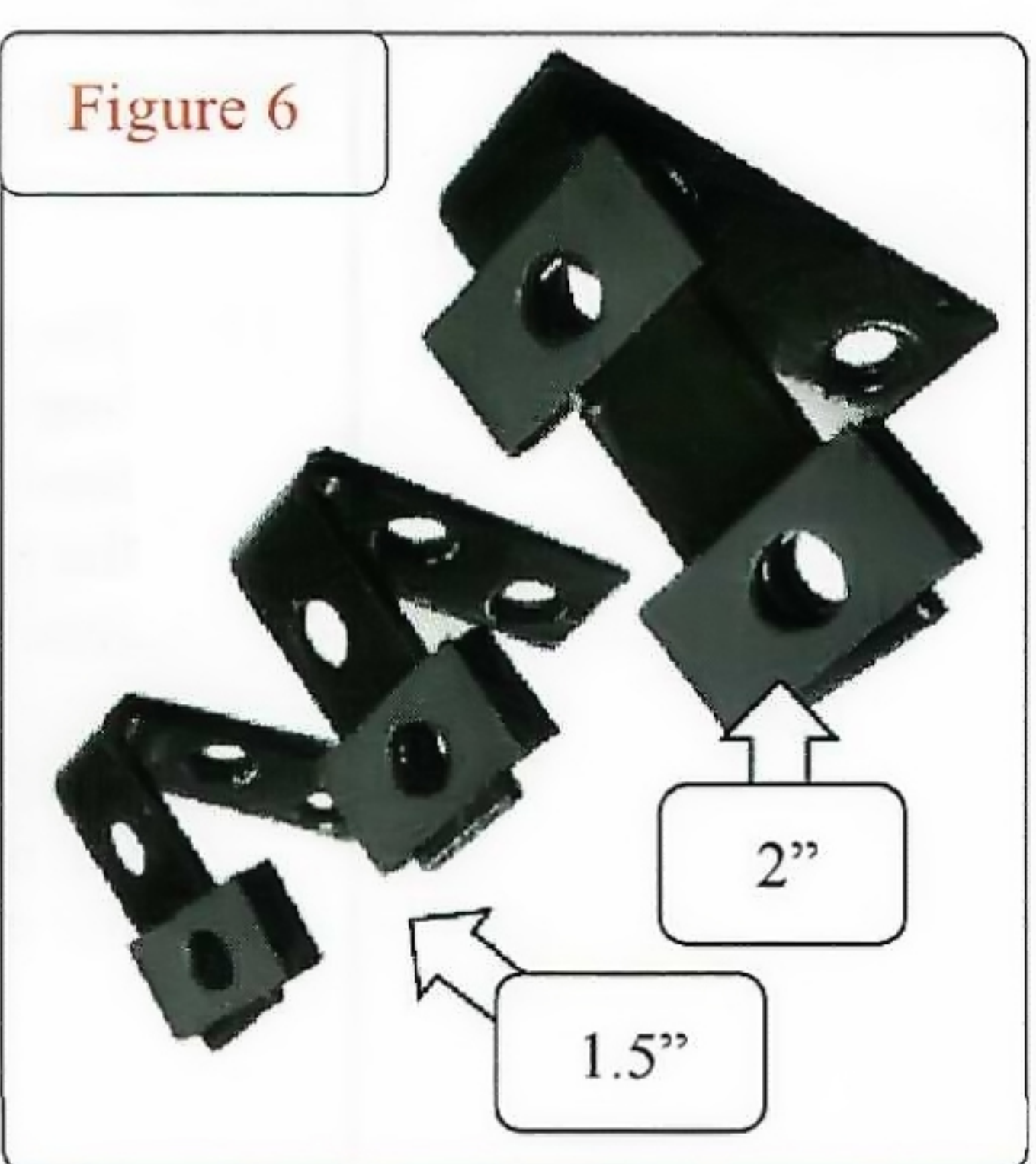


Figure 6

- 10) Slip the upper 2" bracket between the two tabs as shown in Figure 7. Insert (1) 25mm bolt from the outside. Add (1) washer and (1) lock-nut on the inside. Push the upper and lower factory fender together as you tighten the hardware.

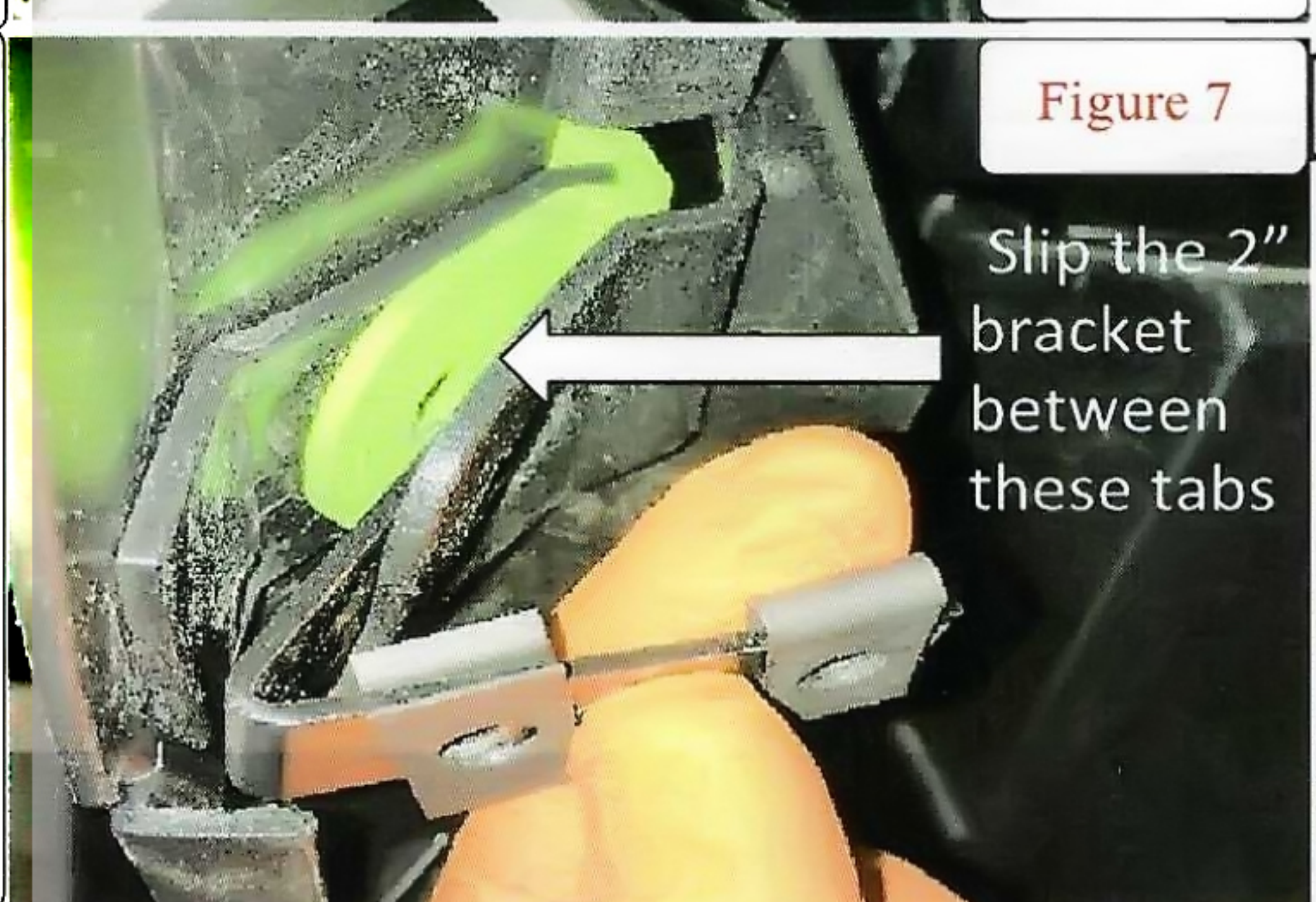
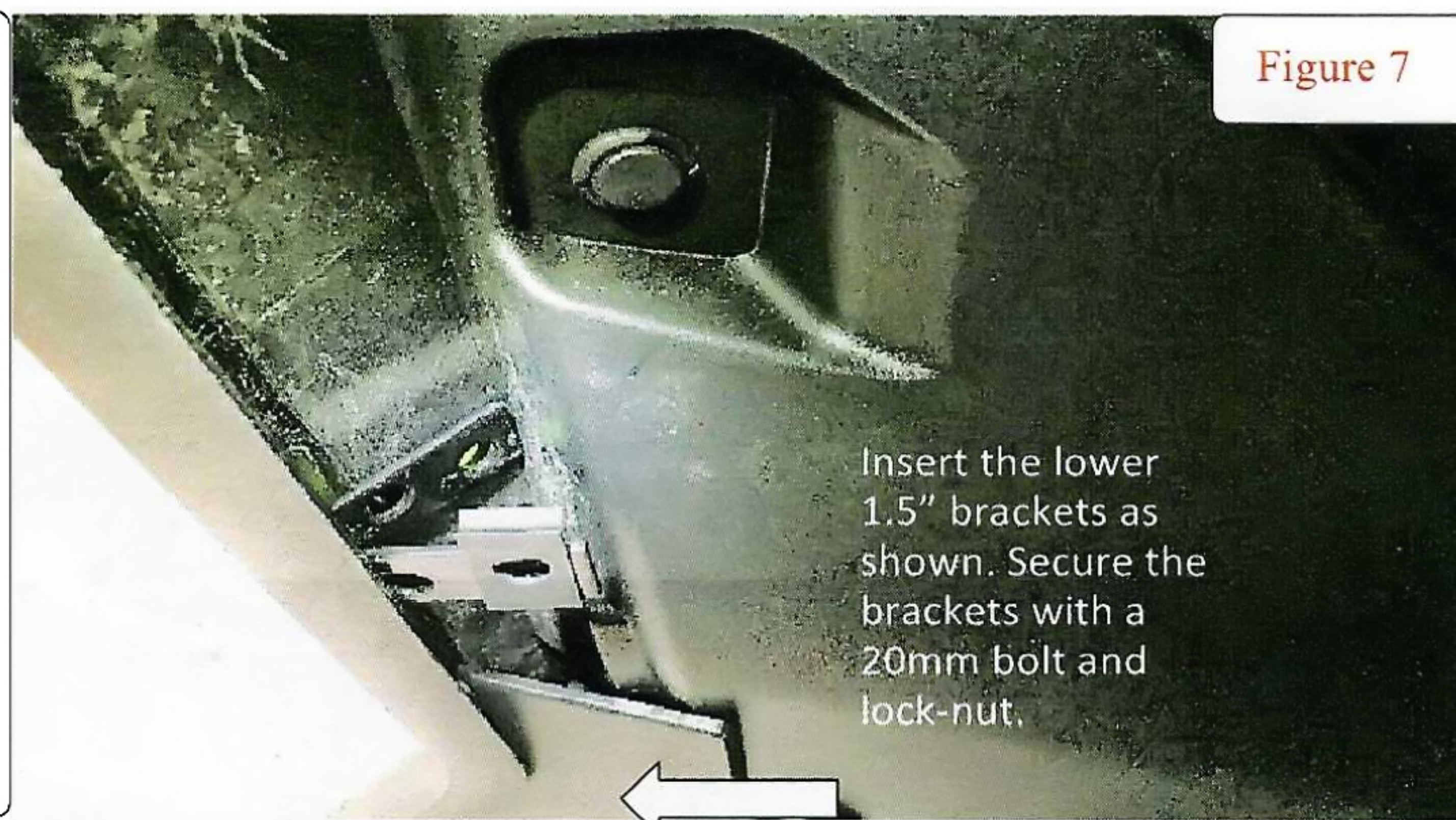


Figure 7

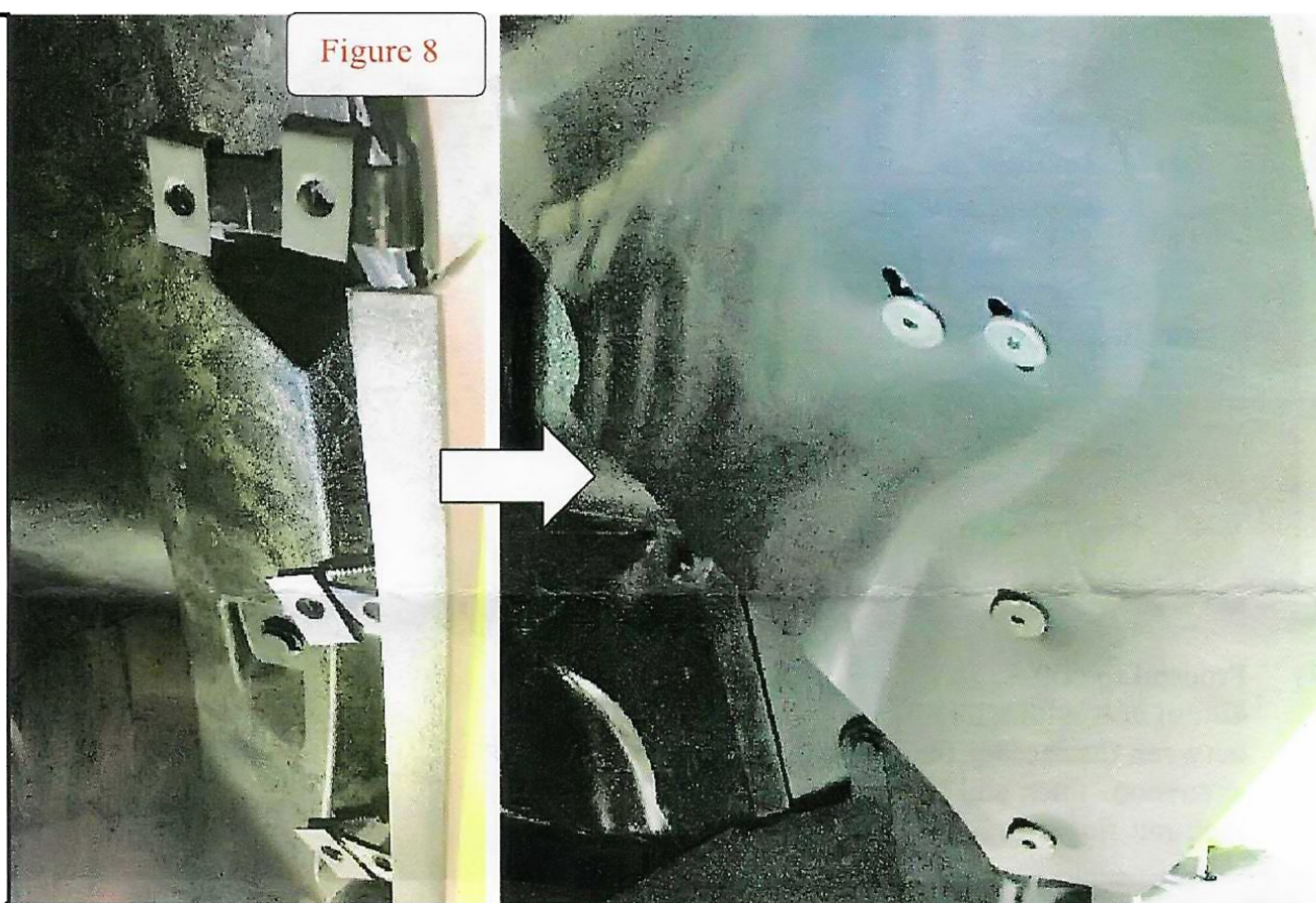


## Honda Talon Rear Fender Extension Installation (Continued)

- 11) Install the lower 1.5" brackets as shown in **Figure 7**. Insert (1) 20mm bolt from the outside of the factory fender. Add (1) lock-nut on the inside of the bracket to secure the bracket to the factory fender.



- 15) Once all the brackets are installed as shown in **Figure 8**, place the front section of the rear fender against the brackets, align the holes, and insert a 20mm bolt in each hole and thread it into the u-nuts finger tight to allow adjustment. It may be necessary to adjust the brackets if the holes do not line up with the slots in the fender extension.



- 12) Adjust the rear fender to minimize any gaps and correct any fitment issues before tightening all the hardware.
- 13) The inner tabs shown in **Figure 9** will secure the rear fender to the cargo area and will help support the fender when muddy. To install the tabs, pull down on the inner fender until the desired angle on the outer fender is achieved.
- 14) Drill 2 holes with a 1/4" bit, insert (1) 20mm bolt from the inside of the cargo area, add a washer, and a lock-nut on the inside.

