

Poly Roof for Kawasaki Mule 600 610

ZP-YJ-031007-002



BEFORE YOU BEGIN

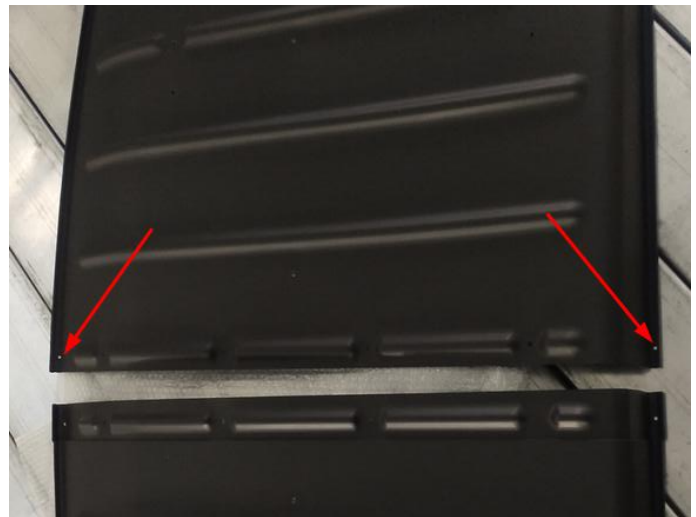
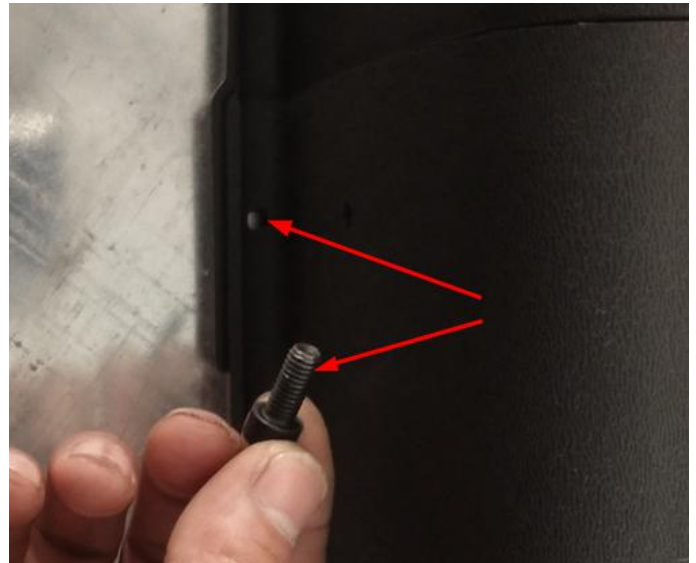
Read these instructions and check to be sure all parts and tools are accounted for. Please retain these installation instructions for future reference.

IMPORTANT

This POLY ROOF is exclusively designed for your vehicle. Please read the installation instructions thoroughly before beginning. Installation is easier if the vehicle is clean and free of debris.

INSTALLATION INSTRUCTIONS

1. Shift vehicle transmission into "PARK". Turn key to "OFF" position and remove from vehicle.
2. Paste the seals on the edge of one half roof, just as the following images show.



3. Use the screws in the mount hardware package to fix the two half roofs together to form a complete roof.

Poly Roof for Kawasaki Mule 600 610

ZP-YJ-031007-002



5. Place the roof on the cab frame as shown in the illustration below.

6. Place the four 25mm bolts in the front mounting holes of the roof. Place the four 35mm bolts in the rear holes.

7. Install the 2 front clamps with a round spacer between each clamp and the top. Leave nuts loose.

8. Lift the rear of the roof and slide the rectangular spacers onto the rear mounting bolts. Install a clamp on each side. Leave the nuts loose.

9. Firmly push the hard top forward and hold forward while tightening the nuts. Tighten to 7 N/m.

NOTICE:

Top must be removed for transport on open trailer or truck at speeds higher than normal vehicle speed.

Tools required for installation: 10mm wrench or socket, #2 Phillips Screwdriver.

4. Place washers on the 8 bolts provided in the kit.

