

# Headlights for Yamaha Raptor YFZ Wolverine

ZP-YJ-031101-002



## BEFORE YOU BEGIN

Read these instructions and check to be sure all parts and tools are accounted for. Please retain these installation instructions for future reference.

## IMPORTANT

The Headlights Kit is exclusively designed for your vehicle. Please read the installation instructions thoroughly before beginning. Installation is easier if the vehicle is clean and free of debris. For your safety, and to ensure a satisfactory installation, perform all installation steps correctly in the sequence shown.

## INSTRUCTIONS

### Installation

Note: Shift vehicle transmission into "PARK". Turn key to "OFF" position and remove from vehicle.

#### 1. Product photo



2. There is a fixing screw for the original headlight, unscrew it for later use. Remove the original headlight, as shown in the picture:



3. There are three O-shaped rubber rings and a stainless steel round tube on the removed original lamp, install the O-shaped rubber rings on the new headlight as the position of the original headlight, and

install the stainless steel round tube in one hole, as shown in the picture:



4. Install the outer decorative frame of the headlight, find the corresponding position, and directly lock it, as shown in the picture:

# Headlights for Yamaha Raptor YFZ Wolverine

ZP-YJ-031101-002



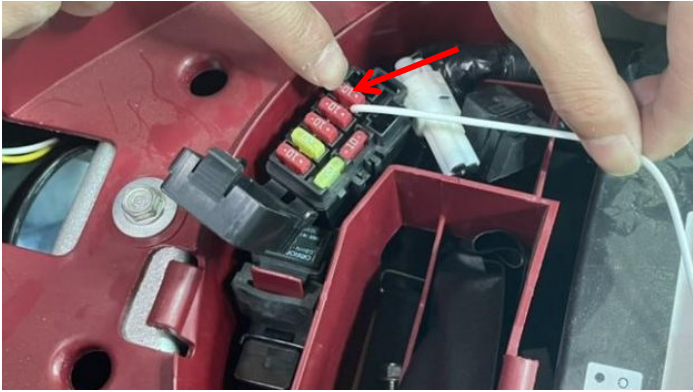
6. After installing the headlight, open the seat cushion (the switch of the seat cushion is at the bottom of the taillight), find the white wire harness in the accessories package, peel off the outer skin of one end, expose the copper wire, and connect it to the ACC electrical box, as shown in the picture:

5. Install the new light in the same way as the removing of the original light, and fix it with the spare screws removed before (connect the plug-in of wiring harness on the light with the plug-in of wiring harness on the vehicle before installing the headlight), for the other side, replace the headlight as above Steps 2-4. As shown in figure:



# Headlights for Yamaha Raptor YFZ Wolverine

ZP-YJ-031101-002



7. Pull the white wire to the position of the headlight, peel off the middle of the wiring harness(don't cut the copper wire inside), connect it with the red wire on the headlight, and complete the insulation measures, then connect the extra white wire to the red wire of the other headlight, start the vehicle after connecting, to check whether the headlights are electrified, as shown in figure:

Note: Since the original vehicle has no steering system, the steering function will be wired according to the actual needs of the vehicle owner.



8. Installation complete.