

Rear Fender for Can-Am Spyder F3

ZP-YJ-030610-011

BEFORE YOU BEGIN

Read these instructions and check to be sure all parts and tools are accounted for. Please retain these installation instructions for future reference.

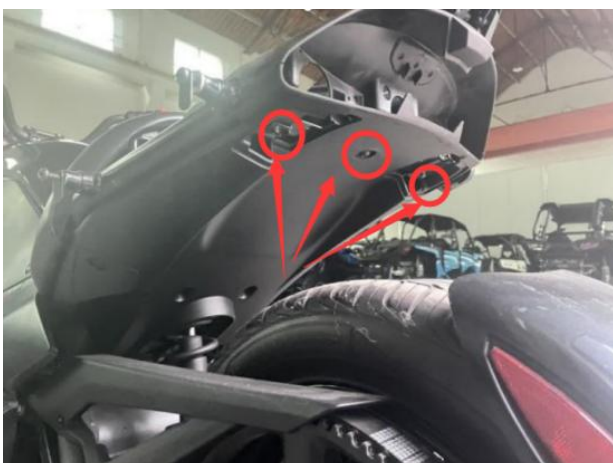
IMPORTANT

This Rear Fender KIT is exclusively designed for your vehicle. Please read the installation instructions thoroughly before beginning. Installation is easier if the vehicle is clean and free of debris.

INSTALLATION INSTRUCTIONS

1. Remove the cushion on the vehicle, remove the plug covers on both sides under the rear seat and the screws in the middle for standby.

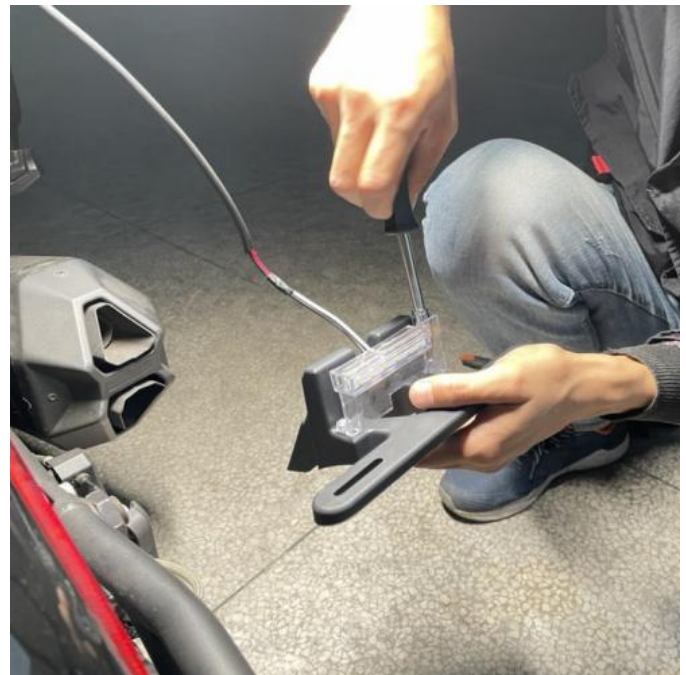
2. Find the accessories in Figure 1 and cut the same notch according to the paper model (don't take the plug cover wrong, just cut the plug cover on the right), then use it for standby (refer to Figure 3).



Rear Fender for Can-Am Spyder F3

ZP-YJ-030610-011

SAUTVS®



3. Fix the license plate lamp on the bracket, tighten the screws, and fix the wire harness with tie tape according to the position of the wire groove.



4. Install the license plate lamp and bracket into the fender in the correct direction, and the screw fixing position on the back of the fender is reinforced with nuts.

Rear Fender for Can-Am Spyder F3

ZP-YJ-030610-011

SAUTVS®



5. Remove the 2 screws that fix the heat shield on one side of the vehicle, remove the heat shield, and unplug the harness plug of the original vehicle.

upper right of the fender, and pass through the plug hole to the plug-in of the heat insulation plate wire harness. Connect the plug-in on the vehicle with the adapter wiring in the accessory bag. After completion, start the vehicle, check whether the license plate lamp is energized, and ensure that the lamp works normally, then install the heat insulation plate back.



6. Use the wire harness on the license plate lamp to pass through the wire hole on the

Rear Fender for Can-Am Spyder F3

ZP-YJ-030610-011

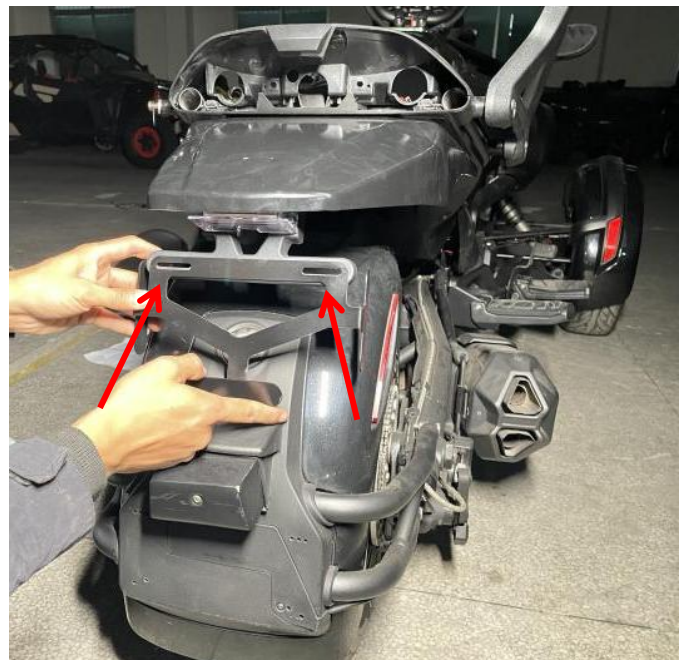
SAUTVS®



8. Install the reflector bracket on the license plate lamp bracket and fix it with screws.



7. Install the fender on the vehicle, install the removed plug cover (the plug cover with notch is installed on the right), fix the screw from below the fender, and install the license plate lamp.



9. Installation completed.

