

BEFORE YOU BEGIN

Read these instructions and check to be sure all parts and tools are accounted for. Please retain these installation instructions for future reference.

IMPORTANT

This FOLDING SIDE MIRRORS KIT is exclusively designed for your vehicle. Please read the installation instructions thoroughly before beginning. Installation is easier if the vehicle is clean and free of debris.

INSTALLATION INSTRUCTIONS

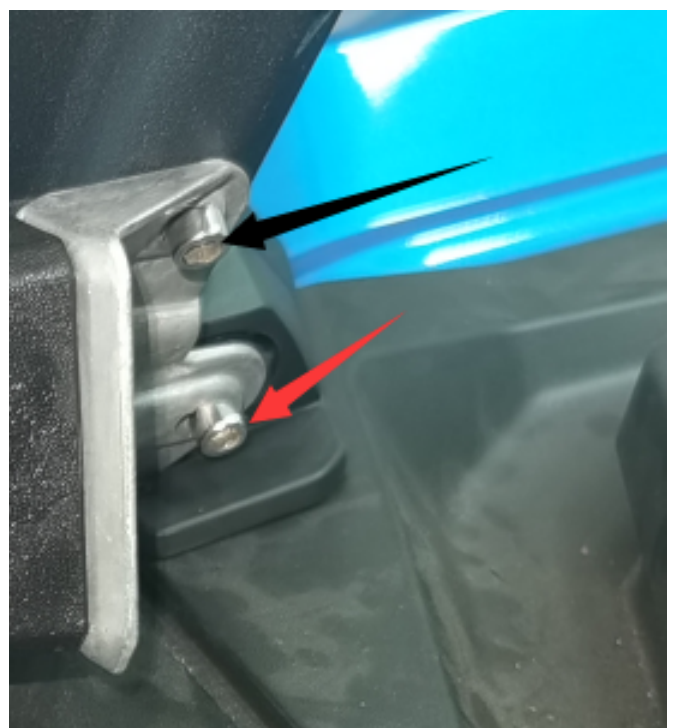
Note: Shift vehicle transmission into “PARK”. Turn key to “OFF” position and remove from vehicle.

1. Remove the plastic protection plate from pillar A of the original vehicle , and install the bracket of rear view mirror on pillar A .

Remark : Fix the screw indicated by the red arrow on pillar A by the nut, and the installation methods of the screw indicated by the black arrow varies with different models .

The 2021 COMMANDER model has a threaded hole in the pillar A for direct mounting.

There is a hexagonal hole on pillar A of Trail model, you can put the hexagonal thread set into the hole ,and then turn the screw.



2. Fix the mirror to the bracket by the screws in the accessories package.

Remark : Repeat Step 1 - 2 for the other side

