

Combination Storage Box for Polaris Ranger XP 1000



ZP-YJ-030508-017

BEFORE YOU BEGIN

Read these instructions and check to be sure all parts and tools are accounted for. Please retain these installation instructions for future reference.

IMPORTANT

The Storage Box is exclusively designed for your vehicle. Please read the installation instructions thoroughly before beginning. Installation is easier if the vehicle is clean and free of debris. For your safety, and to ensure a satisfactory installation, perform all installation steps correctly in the sequence shown.

INSTALLATION INSTRUCTIONS

Note: Shift vehicle transmission into "PARK". Turn key to "OFF" position and remove from vehicle.

Product and accessories:

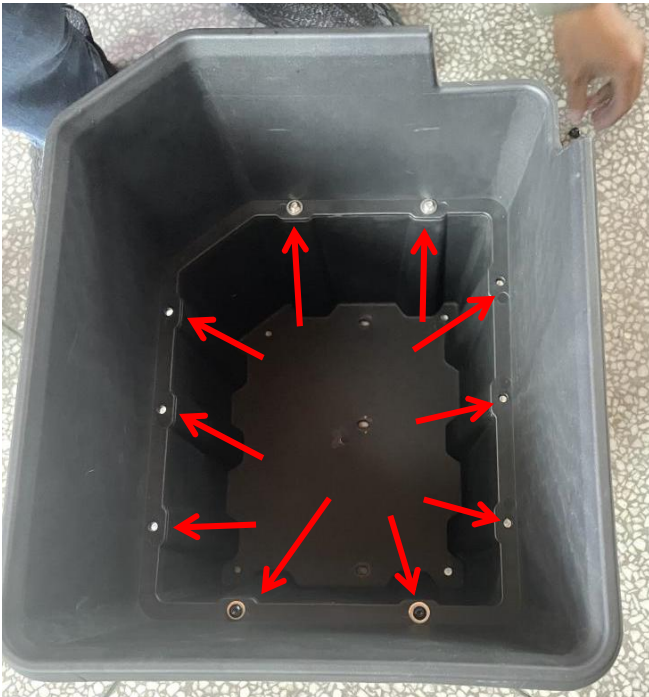


1. First assemble the separate storage box into a whole with screws and nuts. As shown in figure:

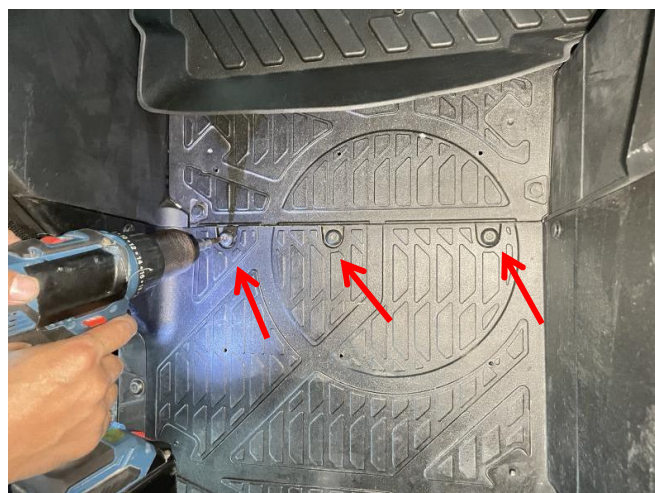
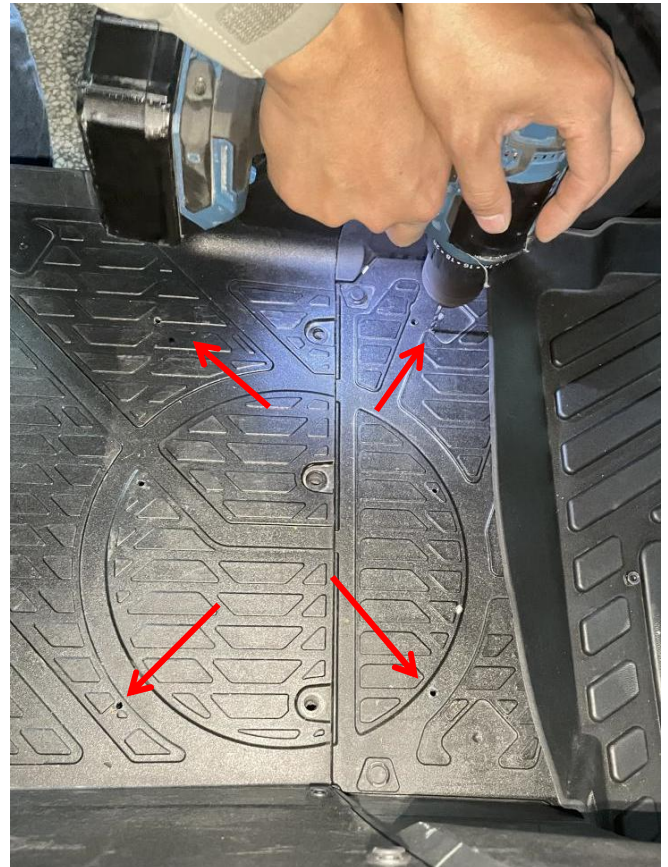
Combination Storage Box for Polaris Ranger XP 1000



ZP-YJ-030508-017



2. Lift the passenger seat, unscrew the 3-hole screws fixing the floor mat under the seat, and then place the assembled storage box in the installation position. Mark four fixed points with a marker according to the screw holes at the bottom of the storage box, then remove the storage box and drill the screw holes with a 3mm drill. As shown in figure:



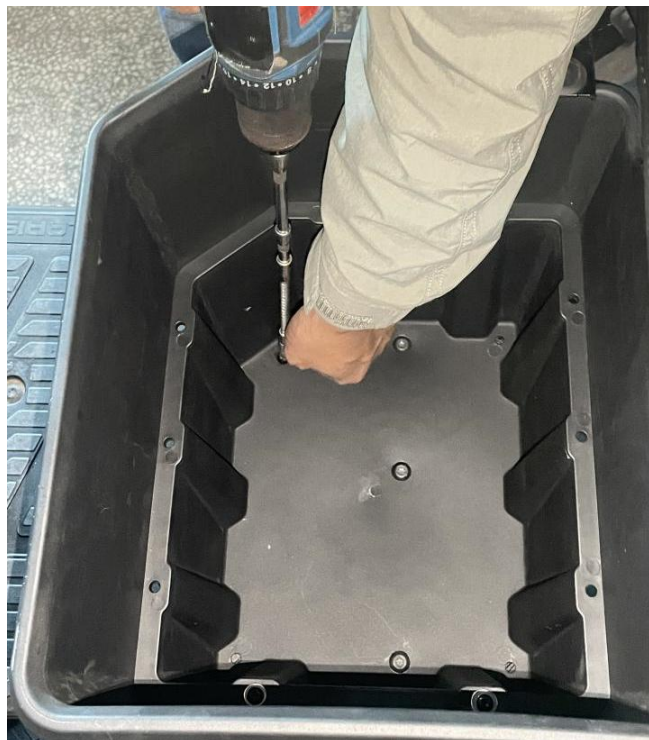
3. After above steps are completed, put the storage box back to the installation position, screw the floor mat screws that were

Combination Storage Box for Polaris Ranger XP 1000



ZP-YJ-030508-017

unscrewed before (not too tight at first), then fix the four corners of the bottom of the storage box with the screws and flat washers, and then tighten the floor mat screws. As shown in figure:



4. Installation finished.