

Rear Accent Light for Polaris RZR PRO XP



ZP-YJ-030502-030

BEFORE YOU BEGIN

Read these instructions and check to be sure all parts and tools are accounted for. Please retain these installation instructions for future reference.

IMPORTANT

The REAR ACCENT LIGHT KIT is exclusively designed for your vehicle. Please read the installation instructions thoroughly before beginning. Installation is easier if the vehicle is clean and free of debris. For your safety, and to ensure a satisfactory installation, perform all installation steps correctly in the sequence shown.

INSTALLATION INSTRUCTIONS

Note: Shift vehicle transmission into "PARK". Turn key to "OFF" position and remove from vehicle.

Products and accessories.



1. Remove the the seat, armrest box and decorative cover of shift rod in the cab of the original vehicle, and then unscrew the screws of the guard plate on both sides of the shift rod (the guard plate should not be taken down, as long as there is a gap to facilitate the line through). As shown in figure:

Rear Accent Light for Polaris RZR PRO XP

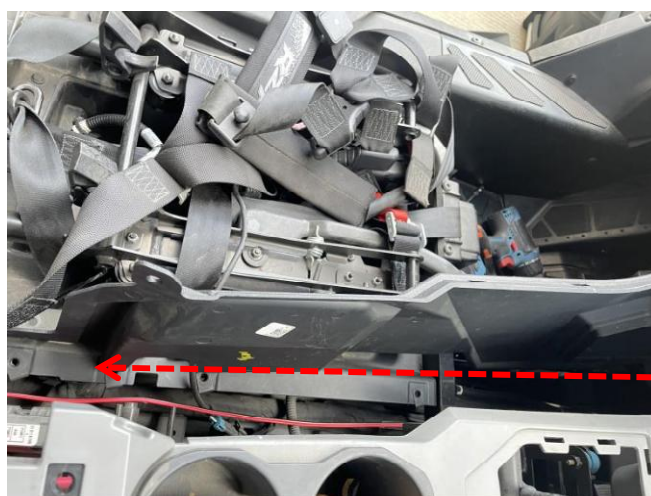


ZP-YJ-030502-030



2. Open the cover of the center console storage box and take out the built-in tray. Prepare the 3M extension cable in the product, thread it through the center console and shift rod from the storage box, and then thread it through the outlet hole at the end of the armrest box to the rear wheel of the original vehicle. As shown in figure:

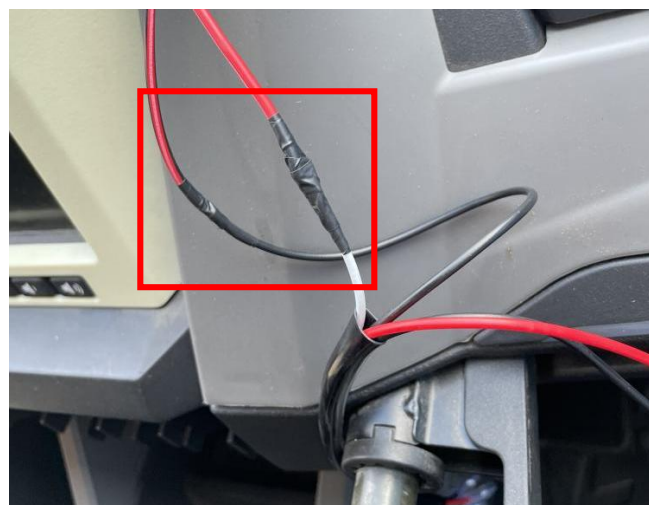
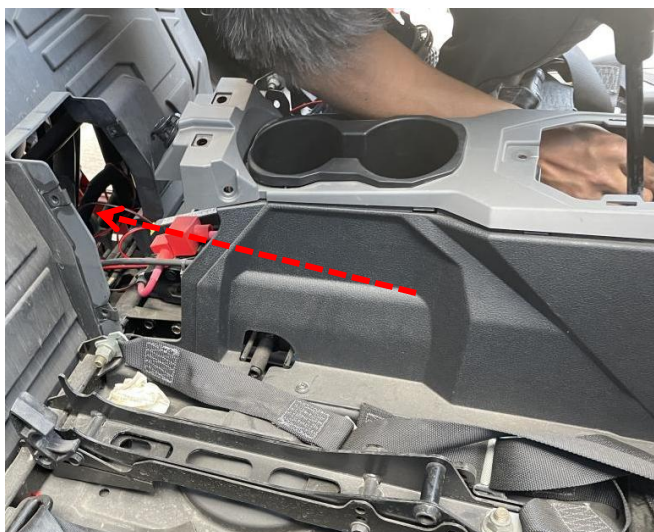
Note: Through the central console, arrange and place the extension wire of the shift rod in the guard plate on one side.



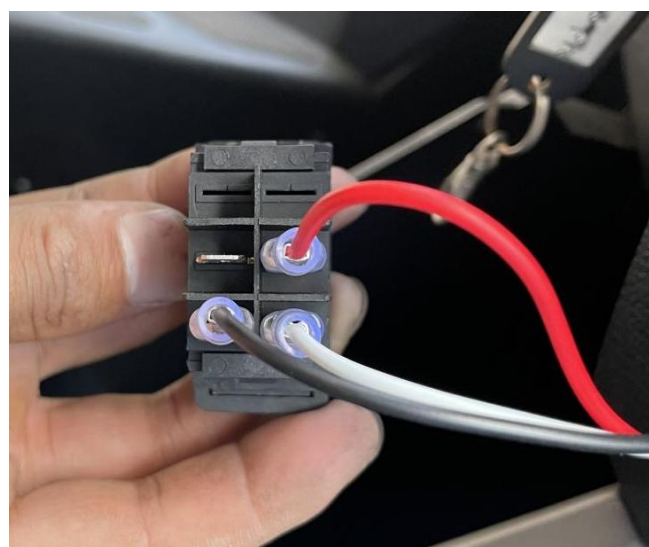
Rear Accent Light for Polaris RZR PRO XP



ZP-YJ-030502-030



3. Pry open a switch cover on the switch panel. Prepare the switch and No. 1 converter cable in the product, connect one end of the wire harness of the converter cable to the extension cord (Black wire to black, red wire to white, peel off the the outer skin of the wiring harness joint, expose the copper wire inside, wrap the copper wire of the two wires together, and then make the insulation protection), thread the connected adapter cable through the storage box, and then through the switch hole we just pried open, insert the end of the wire harness with the transparent sheath into the switch lugs in the order shown in the picture, and finally install the switch on the panel. (If the hole is too small during installation, the hole can be expanded with a utility knife) .As shown in figure:



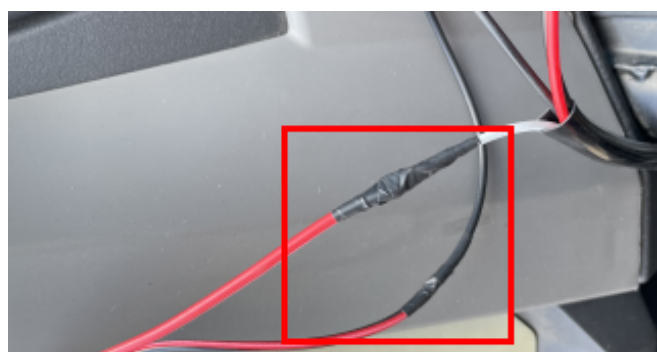
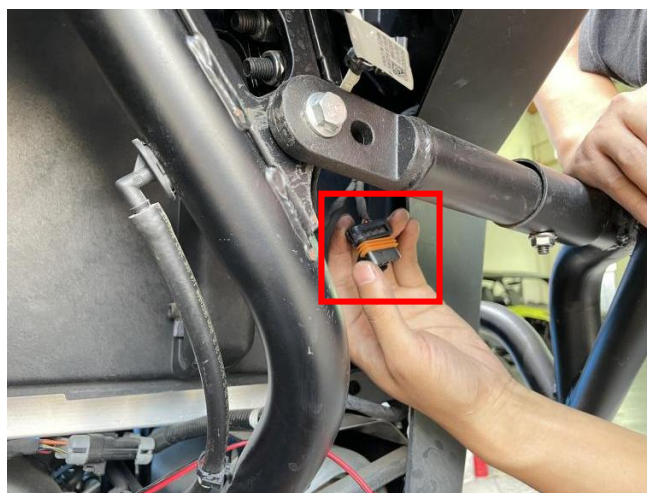
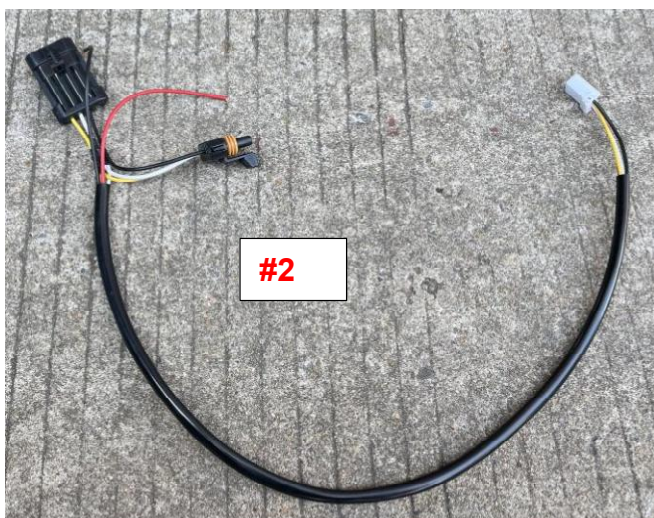
Rear Accent Light for Polaris RZR PRO XP



ZP-YJ-030502-030



4. Connect the extension cable at the rear wheel to the No. 2 conversion cable (use the connection method in Step 3. Black wire to black, red wire to white), disconnect the original taillight wiring harness plug-ins, use the wiring harness plug-ins of the #2 transfer cable to reconnect the taillight and the whole vehicle wiring harness (the loose extension cable in the middle can be fixed with cable ties). As shown in figure:



5. Connect the remaining wire harness of the #2 conversion cable to the wire harness of the rear accent light (stuck the plug-in of the connector in the rear shell of the rear accent light to prevent the plug-in from flooding when it rains), and then fix the rear accent light on the original vehicle with screws. As shown in figure:

Rear Accent Light for Polaris RZR PRO XP

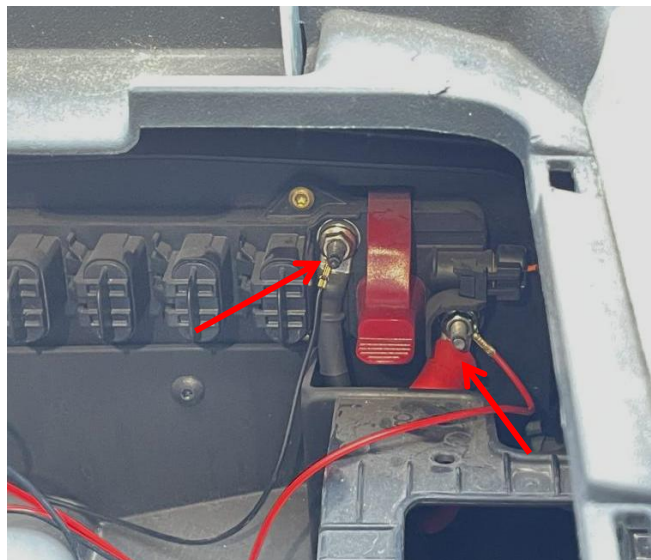


ZP-YJ-030502-030



6. Return to the cab, unscrew the nut on the terminal post at the bottom of the central console storage box, and set the 2 wires with copper pieces of the No.1 transfer wire on the terminal post according to the positions of the positive and negative terminals (black wire cover black, red wire cover red), and then

tighten the nuts. Finally restore and install all the accessories just removed. As shown in figure:



7. Installation finished.

