

MUD FLAPS KIT FOR POLARIS RZR PRO XP

BEFORE YOU BEGIN

Read these instructions and check to be sure all parts and tools are accounted for. Please retain these installation instructions for future reference.

IMPORTANT

This MUD FLAPS KIT is exclusively designed for your vehicle. Please read the installation instructions thoroughly before beginning. Installation is easier if the vehicle is clean and free of debris.

INSTALLATION INSTRUCTIONS

1. Shift vehicle transmission into "PARK". Turn key to "OFF" position and remove from vehicle.
2. Take the installation of left mud flaps as example. Remove the two screws indicated by the red arrow above the front wheel.



3. Align the two holes indicated by the red arrow on the front fender flare with the mounting holes of the screw removed in step 2. Tighten the screws removed in step 2 on these 2 holes.



4. Using the drill and 8mm drill bit, align the

hole on the fender, then drill the hole at the point indicated by the arrow on the front wheel panel, then fix the mud flaps with an 8mm plastic snap fastener.



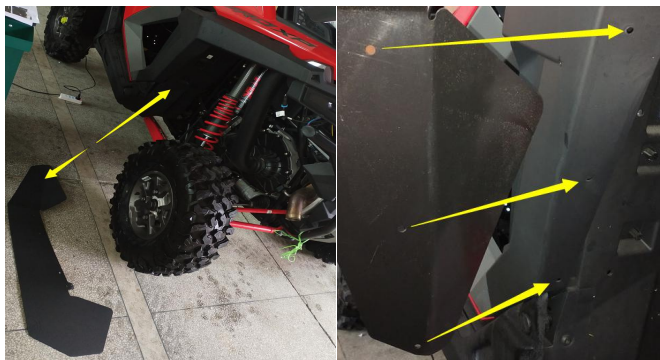
5. Complete the front Mud Flap installation.



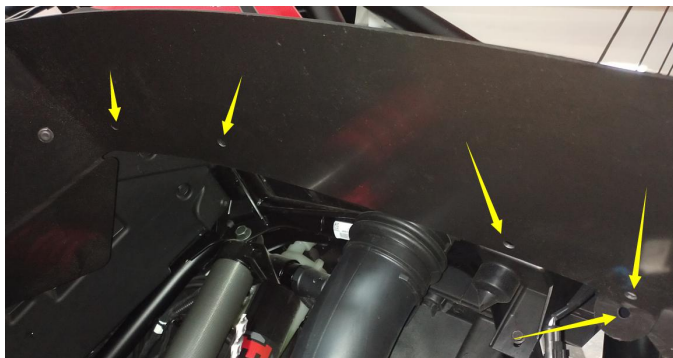
6. There are corresponding holes in the position indicated by the yellow arrow on the rear mud flap and the rear fender. Fix the lower end of the rear mud flap on the rear wheel mud

MUD FLAPS KIT FOR POLARIS RZR PRO XP

guard panel with 8mm plastic snap fastener.

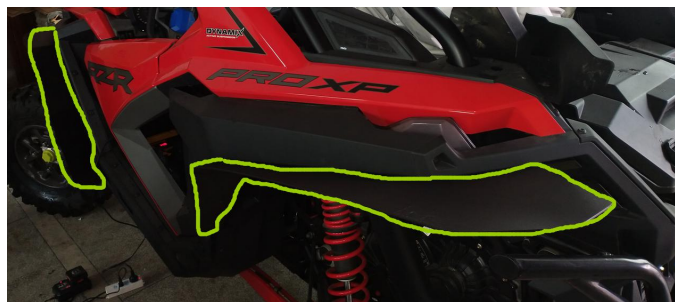
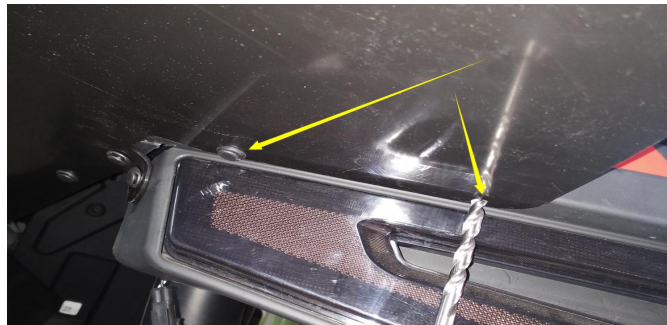


7. Place the rear mud flap under the rear wheel guard panel together, then drill the holes indicated by the arrows shown in the following photo by 8mm drill bit, and fix them together by 8mm plastic snap fasteners.



8. There is a part of mud flap above the tail light. Place the mud flap on the plastic parts on the tail light, and drill 2 holes indicated by arrows shown in the following image through the mud flap and plastic parts, then fix them together by 8mm plastic snap fasteners, and complete the installation of rear mud flap.

NOTICE: Please remove the tail light before this step.



9. Repeat steps 2 to 8 for the installation of the right mud flaps.