

LED Auxiliary Light for Can-Am Spyder RT

ZP-YJ-030602-027



BEFORE YOU BEGIN

Read these instructions and check to be sure all parts and tools are accounted for. Please retain these installation instructions for future reference.

IMPORTANT

This LED Auxiliary Light is exclusively designed for your vehicle. Please read the installation instructions thoroughly before beginning. Installation is easier if the vehicle is clean and free of debris.

INSTALLATION INSTRUCTIONS

1. Shift vehicle transmission into "PARK". Turn key to "OFF" position and remove from vehicle.
2. Products and accessories, shown in the picture.



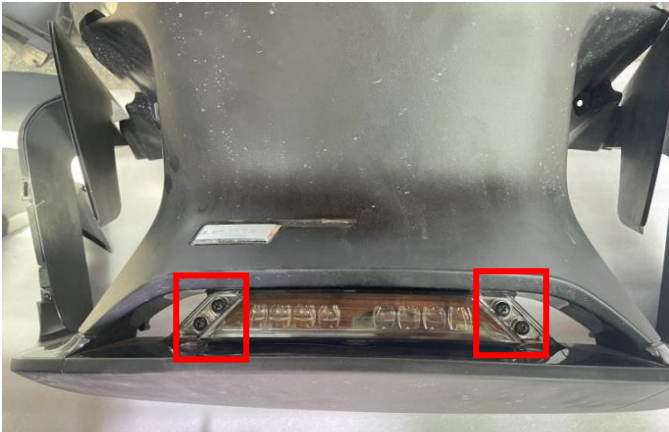
3. Remove the front storage box, front bar, grille on the front bar and trim panels on both sides of the original vehicle.



4. Remove the decorative plate of the LED auxiliary light on the front bar, install the LED auxiliary light and fix it with screws.

LED Auxiliary Light for Can-Am Spyder RT

ZP-YJ-030602-027



5. Use one end of the matching adapter cable to connect the LED auxiliary light harness plug-in, clip other adapter cables into the trunking on the storage box, fix the storage box on the front bar with the previously removed buckle, and install the grille and other decorative panels.



6. Put the storage box and front bar back on the original vehicle, connect the harness plug-in of the LED auxiliary light of the original vehicle with the corresponding plug-in of the adapter line, and connect the plug-in at the remaining end of the adapter line to the original vehicle.

LED Auxiliary Light for Can-Am Spyder RT

ZP-YJ-030602-027



Note: There are 2 limit cards at the front of the storage box, which need to be stuck into the corresponding bayonet.



7. Fix the storage box and the front bar with screws, and install the trim panels of the original vehicle. Installation is completed.

