

Combined Hard Sport Roof for Can-Am Maverick X3



ZP-YJ-030607-001

BEFORE YOU BEGIN

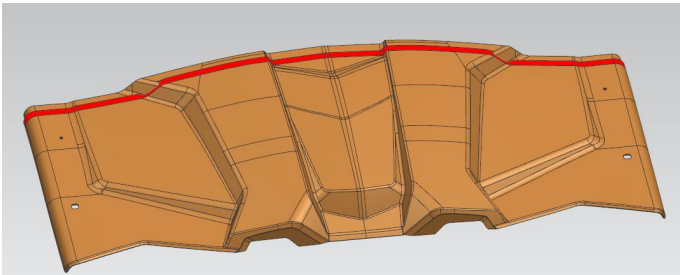
Read these instructions and check to be sure all parts and tools are accounted for. Please retain these installation instructions for future reference.

IMPORTANT

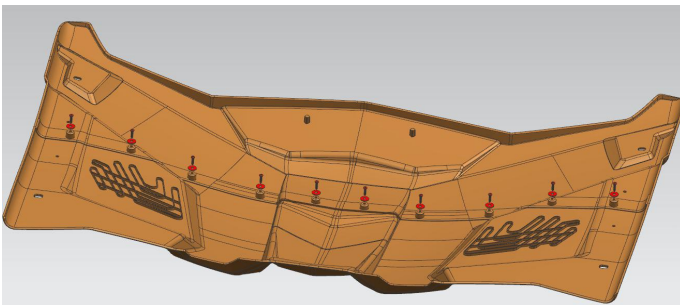
This HARD SPORT ROOF is exclusively designed for your vehicle. Please read the installation instructions thoroughly before beginning. Installation is easier if the vehicle is clean and free of debris.

INSTALLATION INSTRUCTIONS

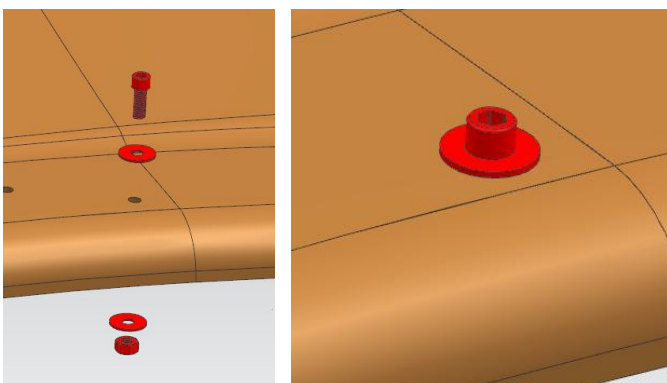
1. Shift vehicle transmission into "PARK". Turn key to "OFF" position and remove from vehicle.
2. Stick the sealing strip on the half roof. The joint of sealing strip shall be aligned without any gap.



3. Connect the two half roofs with 6mm flat pad and 6x16 self tapping screw.



4. Use M5x16 screws, gaskets and nuts to connect the two half roofs in the order shown in the figure.



5. Clamp the front end of the U-shaped steel clip with pliers for easy operation in next steps.



6. Clamp the U-shaped steel on the L-shaped bracket as shown in the figure.



7. Use a pair of pliers to bend the short side of the L-shaped bracket for easy operation.



Combined Hard Sport Roof for Can-Am Maverick X3

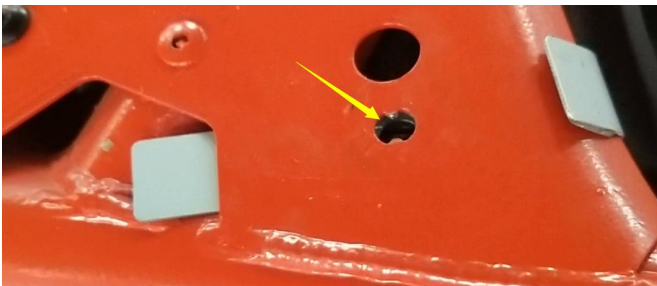
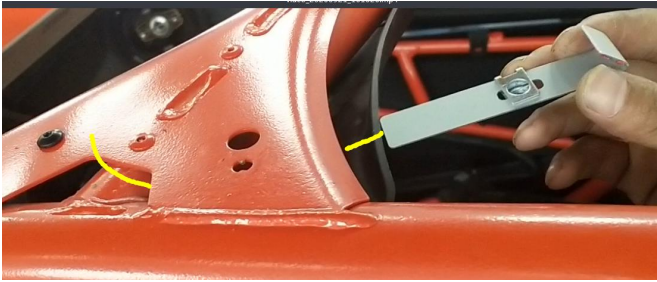


ZP-YJ-030607-001

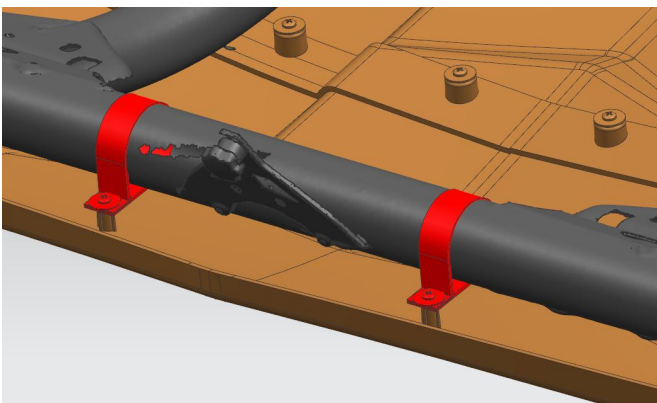
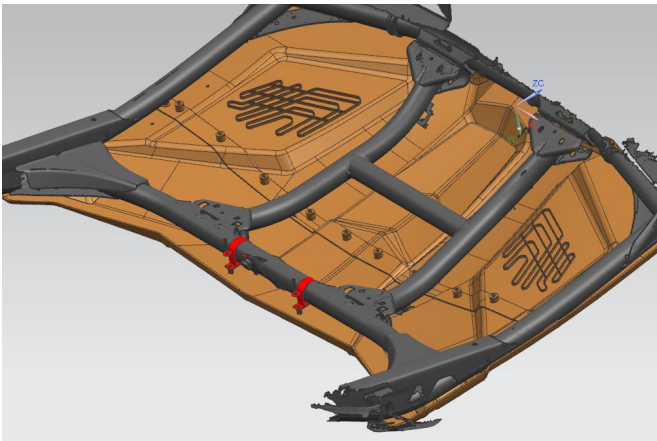
8. Install the L-shaped bracket with U-shaped steel clip on the frame according to the direction shown in the figure.

Note: the threaded hole on the U-shaped steel clip is aligned with the lock hole indicated by the arrow.

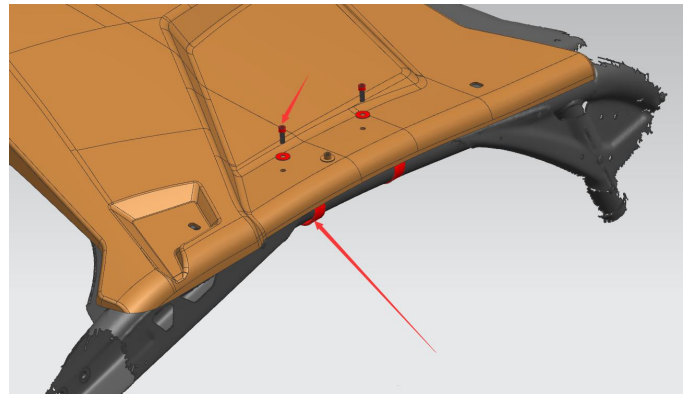
The other side is installed in the same way.



9. Install the clamp at the front of the roof on the frame with a 6mm self tapping screw, and do not tighten the screw first.



10. Install the clamp on the frame with the screw of M6. The nut is not tightened at first.



11. The back of the roof is fixed with bake lite handle screw and butterfly nut. After fixing, tighten the screws in step 8, step 9 and step 10.

