

Combined Rear Bumper FOR Can-Am Defender

SAUTVS®

ZP-YJ-030606-009

BEFORE YOU BEGIN

Read these instructions and check to be sure all parts and tools are accounted. Please retain these installation instructions for future reference.

IMPORTANT

This combined rear bumper with lamp is exclusively designed for your vehicle. Please read the installation instructions thoroughly before beginning. Installation is easier if the vehicle is clean and free of debris.

INSTALLATION INSTRUCTIONS

1. Use 8 M8 * 50 hex socket screws and 8 M8 lock nuts to assemble part 1 and part 2 through 4 parts 6, as shown in the figure below. Ensure that the large hole of the sleeve is the threaded hole of the screw.

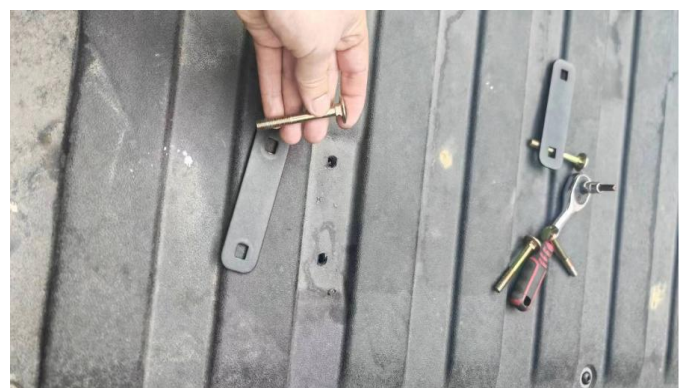


2. Use two M8 * 50 hex socket screws and two

M8 locknuts to assemble part 4 and part 5 on the main body. As shown below:



3. Punch through the four holes reserved on the rear compartment and install them on the rear compartment with four M8 * 70 carriage screws and two mounting plates. As shown below:



2. Use two M8 * 50 hex socket screws and two

Combined Rear Bumper FOR Can-Am Defender

SAUTVS®

ZP-YJ-030606-009

Note: Please refer to the installation video in the Amazon listing before your installation, or contact the seller for the installation video.



4. Install the rear bumper with 4 M8 jam nuts and M8 carriage screws, and tighten all screws. As shown below:



5. Installation is complete.

