

Center Rear View Mirror and Side Mirrors Combo for Yamaha RMAX2/ RMAX4

ZP-YJ-031105-003

SAUTVS®

BEFORE YOU BEGIN

Read these instructions and check to be sure all parts and tools are accounted. Please retain these installation instructions for future reference.

IMPORTANT

The Center Rear View Mirror and Side Mirrors Combo is exclusively designed for your vehicle. Please read the installation instructions thoroughly before beginning. Installation is easier if the vehicle is clean and free of debris.

INSTALLATION INSTRUCTIONS

Note: Shift vehicle transmission into "PARK". Turn key to "OFF" position and remove from vehicle.

1. Product picture



2. First, fix the mounting bracket of the side mirror to the mirror shell with screws. As shown below:

- 2.1 The bracket is divided into left and right parts, which should be noted during installation.
- 2.2 Do not tighten the screws too tight for the time being.



3. Unscrew the screws on the guard bar of pillar A of the original car, use the trombone screws matching the side mirror, pass through the support hole of the side mirror, put on the liner and install on the guard bar of pillar A, and then tighten the nuts. As shown below:

Center Rear View Mirror and Side Mirrors Combo for Yamaha RMAX2/ RMAX4 ZP-YJ-031105-003

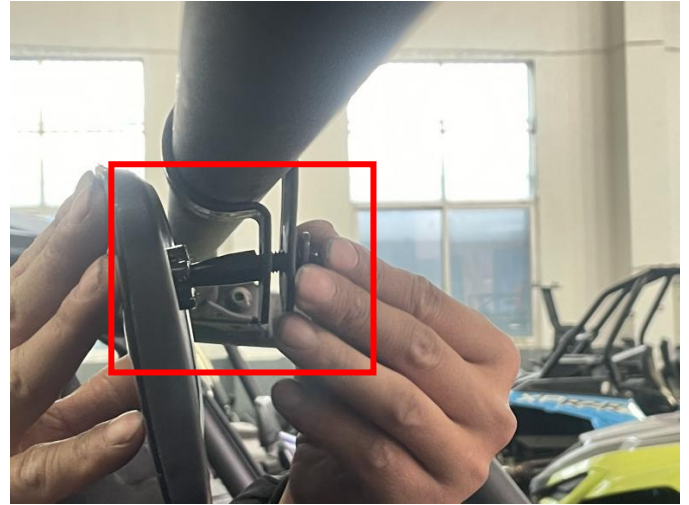
SAUTV5



4. Finally, adjust the angle of the side mirror, and then tighten the nut in step 2. (The side mirror on the other side can be installed according to the same steps above). As shown below:



Center Rear View Mirror and Side Mirrors Combo for Yamaha RMAX2/ RMAX4 ZP-YJ-031105-003



5. Clip the matching mounting bracket of the interior mirror onto the front bar of the original vehicle roof, then pass the fixing screw on the back of the interior mirror through the fixing hole on the mounting bracket, and finally fix it with a nut. As shown below:



6. Installation finished.



Center Rear View Mirror and Side Mirrors Combo for Yamaha RMAX2/ RMAX4 ZP-YJ-031105-003

SAUTV5



Note: Please refer to the installation video in the Amazon listing before your installation, or contact the seller for the installation video.