

Front Grill Light For Honda Pioneer 1000

ZP-YJ-030902-008

SAUTVS®

BEFORE YOU BEGIN

Read these instructions and check to be sure all parts and tools are accounted. Please retain these installation instructions for future reference.

IMPORTANT

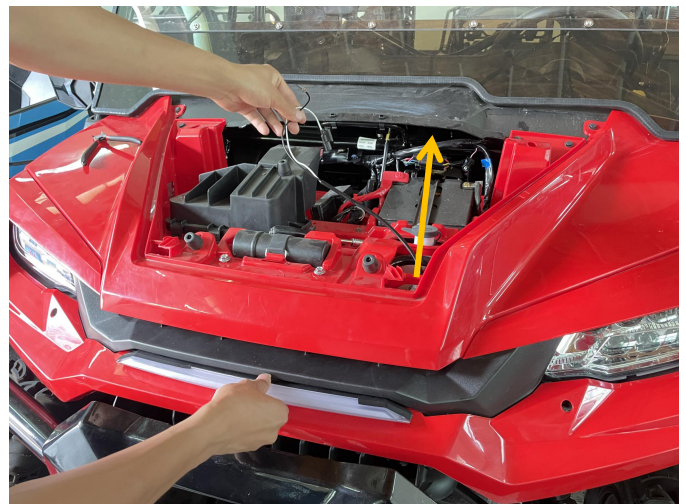
This Front Grill Light is exclusively designed for your vehicle. Please read the installation instructions thoroughly before beginning. Installation is easier if the vehicle is clean and free of debris.

INSTALLATION INSTRUCTIONS

1. Shift vehicle transmission into "PARK". Turn key to "OFF" position and remove from vehicle.
2. Product and accessories.



3. First open the front cover of the vehicle, and then put the wire harness of the grill light through the bottom row of the grille, and pulled it to the battery. As the picture shows:



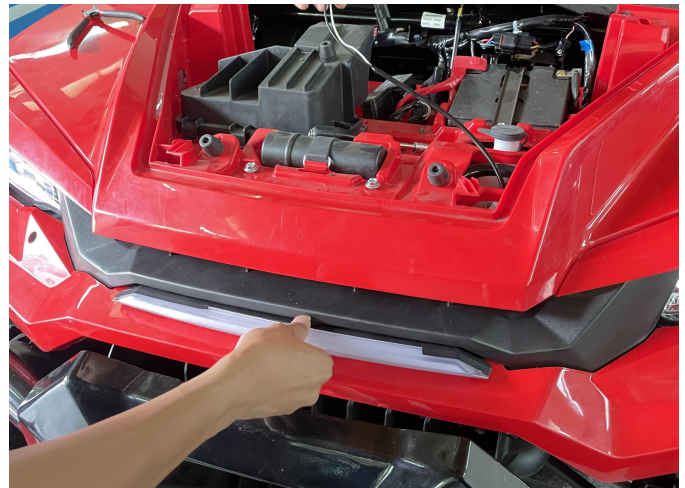
4. After finding the wiring harness plug-in reserved by the vehicle, connect it with a wiring harness plug-in on the grill light. Then fix the other wiring harness on the grill light on the negative plate of the battery by using the screws and nuts in the accessory bag. After the completion, first test whether the light is on normally, and after confirming that it is correct, the grill light can be embedded in the grille of

Front Grill Light For Honda Pioneer 1000

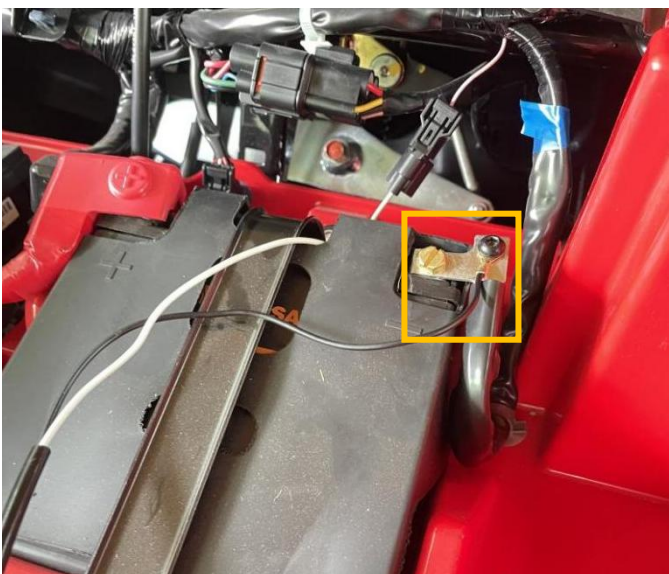
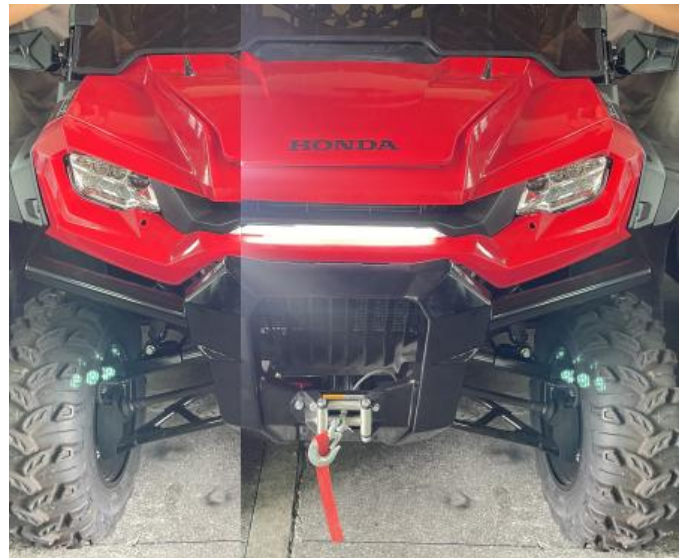
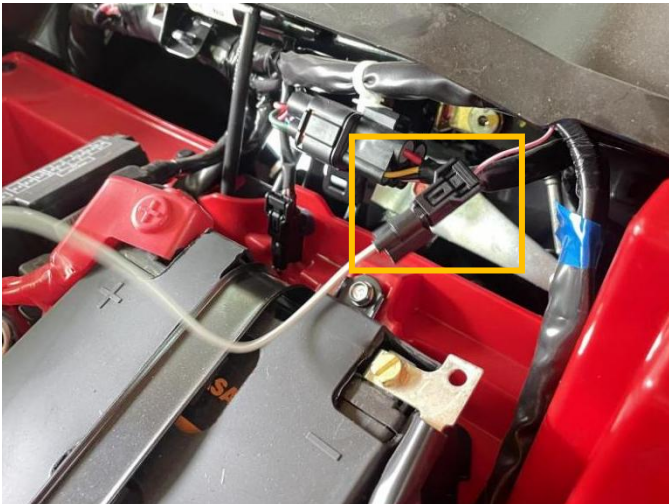
ZP-YJ-030902-008

SAUTV5

the vehicle, and finally installed the front cover back. As the picture shows:



5. The installation is complete.



Note: Please refer to the installation video in the Amazon listing before your installation, or contact the seller for the installation video.