

BEFORE YOU BEGIN

Read these instructions and check to be sure all parts and tools are accounted for. Please retain these installation instructions for future reference.

These LED Headlights are exclusively designed for your vehicle. Please read the installation instructions thoroughly before beginning. Installation is easier if the vehicle is clean and free of debris. For your safety, and to ensure a satisfactory installation, perform all installation steps correctly in the sequence shown.

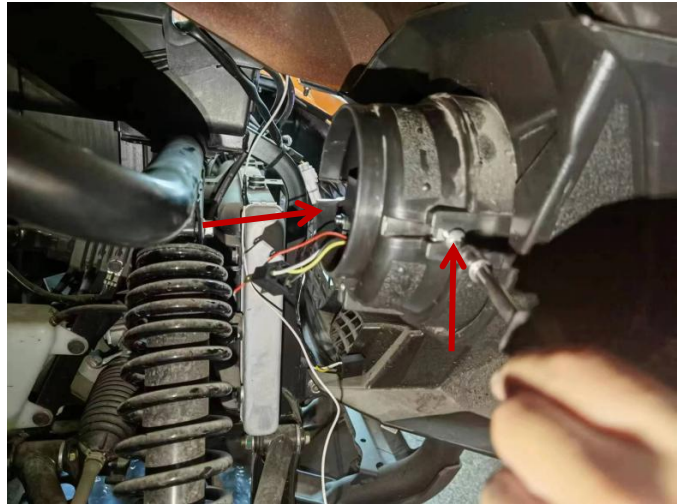
INSTALLATION INSTRUCTIONS

Note: Shift vehicle transmission into "PARK". Turn key to "OFF" position and remove from vehicle.

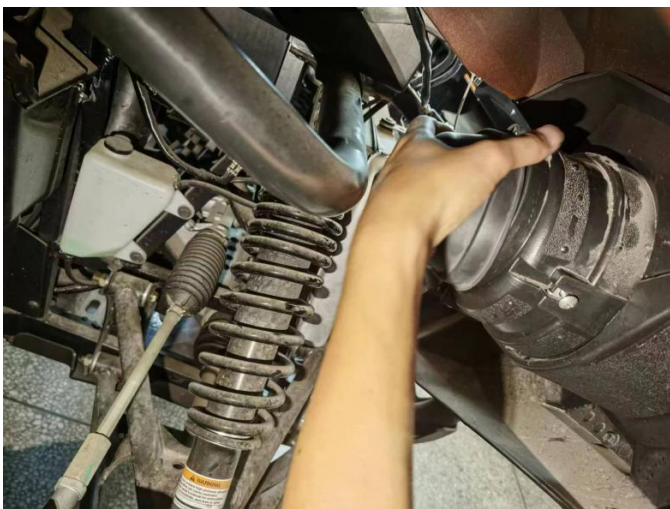
Product and accessories picture:



1. Firstly, pry open the rubber cover on the rear shell of the original headlight, disconnect the wiring harness connector, and then unscrew the screws that secure the original headlight to remove it. As shown in picture:



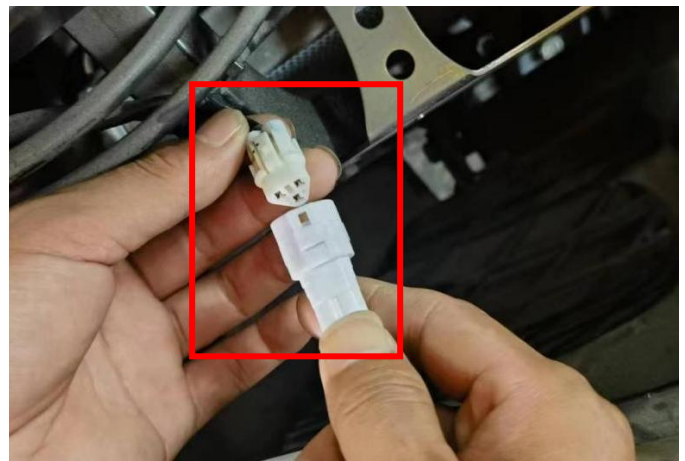
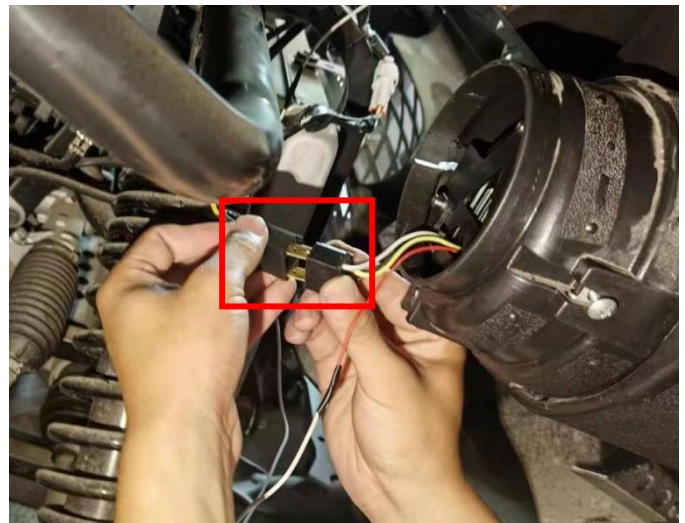
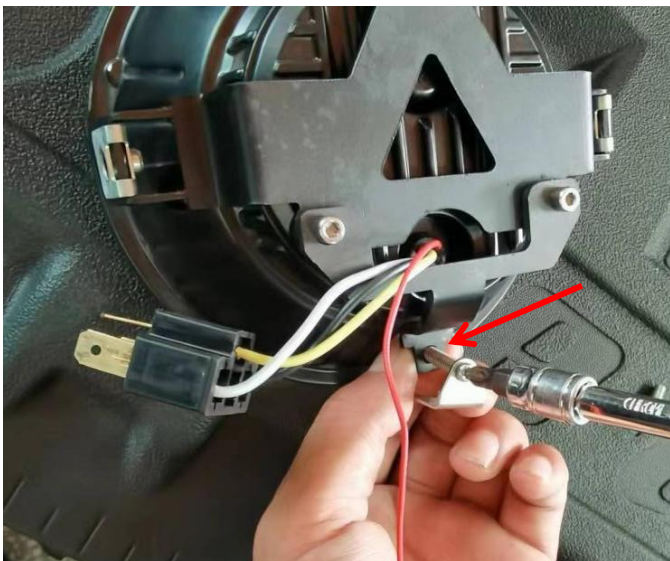
2. Move the steel clips and other accessories from the original lamp onto the new headlight, and then install the new headlight onto the vehicle and secure it with the original screws. As shown in picture:



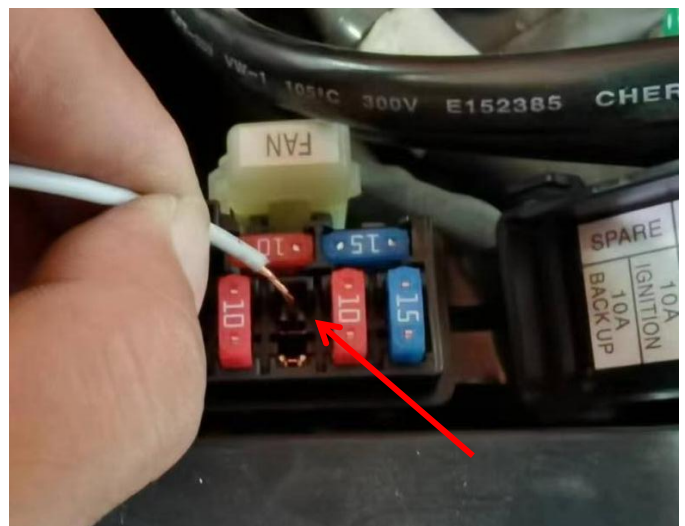
LED Headlights for Yamaha Viking



ZP-YJ-031101-005



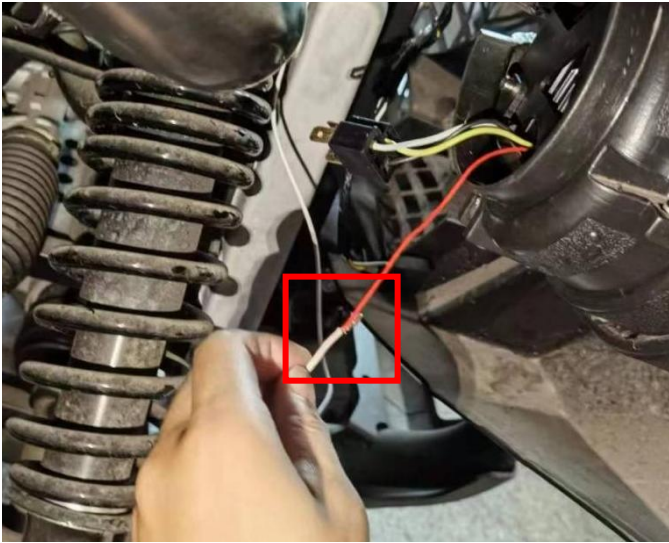
3. Connect the new headlight to the original vehicle wiring harness using the adapter cable provided with the headlight. Then prepare the extension cable provided with the product. Peel off one end of the cable and connect it to the original vehicle ACC electrical box. Connect the other end to the red aperture wire on the headlight and provide insulation protection. Once the wiring is completed, install the rubber rear cover back. (Install the other headlight in the same way).As shown in picture:



LED Headlights for Yamaha Viking



ZP-YJ-031101-005



4. Installation finished.



Note: Please refer to the installation video in the Amazon listing before your installation, or contact the seller for the installation video.