

Lower Doors Inserts for CFMOTO ZForce 950

ZP-YJ-031209-001

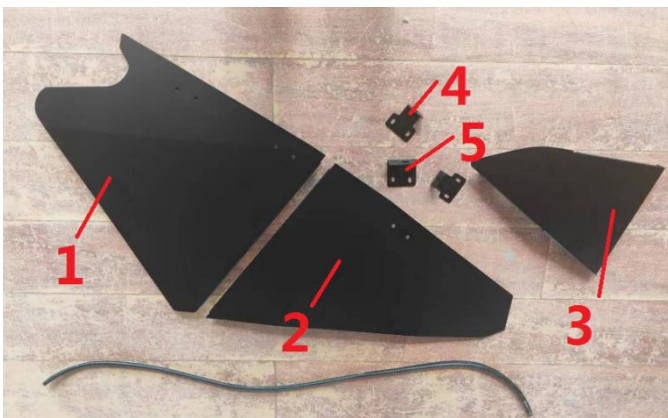
BEFORE YOU BEGIN

Read these instructions and check to be sure all parts and tools are accounted. Please retain these installation instructions for future reference.

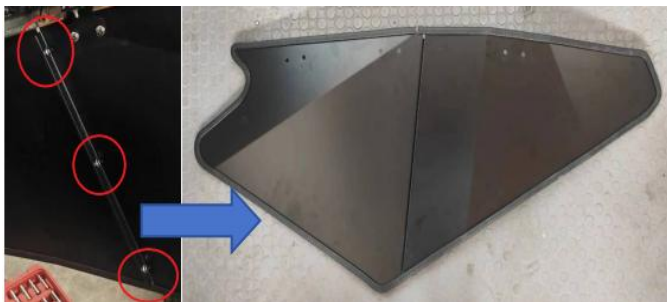
This *Lower Doors Inserts* are exclusively designed for your vehicle. Please read the installation instructions thoroughly before beginning. Installation is easier if the vehicle is clean and free of debris.

INSTALLATION INSTRUCTIONS

1. Shift vehicle transmission into "PARK". Turn key to "OFF" position and remove from vehicle.
2. Products and accessories.



3. Combine Part 1 and Part 2 with 3pcs M6*16 hex screws, 3pcs M6 spacers and 3pcs lock nuts but do not tighten the screws, and then install rubber strips around the door.



4. Install sealing strips to the position of part 3. As shown in the figure.



5. Use a utility knife to remove the three plastic plates according to the molded lines, and remove the 10pcs screws that installed on the inner door plate. As shown in the picture.



6. Install two brackets (part 4) on the upper door frame with 2pcs M6*16 hex screws, 2pcs

Lower Doors Inserts for CFMOTO ZForce 950

ZP-YJ-031209-001

M6 spacers and 2pcs lock nuts. Install one bracket (part 5) on the upper door frame with 1pc M8*16 hex screw, 1pc M8 spacer and 1pc lock nut, and then install the lower door insert on the bracket with 6pcs M6*16 hex screws, 6pcs M6 spacers and 6pcs lock nuts, as shown in the figure:



7. Drill the four holes marked at the position of the plastic triangle with a drill bit about 7.5MM.



8. Use 4pcs M6*16 hex socket screws, 4pcs M6 spacers and 4pcs lock nuts to fix part 3 in the position, as shown in the figure.



9. Adjust the gap of the half door and tighten all the screws. Then, fix the 10pcs screws that removed from the plastic inner plate again. Finally, the installation is complete.

Lower Doors Inserts for CFMOTO ZForce 950

ZP-YJ-031209-001

SAUTVS®



Note: Please refer to the installation video in the Amazon listing before your installation, or contact the seller for the installation video.