

Tailgate Extender Leveling Mounts for Honda Pioneer 700 1000

ZP-YJ-030903-012

SAUTV5

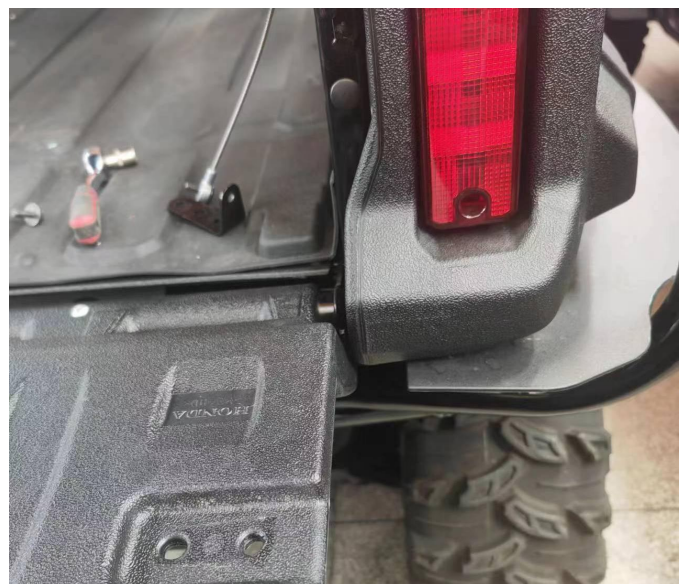
BEFORE YOU BEGIN

Read these instructions and check to be sure all parts and tools are accounted. Please retain these installation instructions for future reference.

These *Tailgate Extender Leveling Mounts* are exclusively designed for your vehicle. Please read the installation instructions thoroughly before beginning. Installation is easier if the vehicle is clean and free of debris.

INSTALLATION INSTRUCTIONS

1. Shift vehicle transmission into "PARK". Turn key to "OFF" position and remove from vehicle.
2. Remove one ball nut and two outer hexagonal screws from the original rear door bracket, and keep the removed accessories, as shown in the figure.



3. Install the new bracket on the rear gate with the screws and nuts just removed, and the installation is complete, as shown in the figure.

Tailgate Extender Leveling Mounts for Honda Pioneer 700 1000 ZP-YJ-030903-012

SAUTVS®

contact the seller for the installation video.



Note: Please refer to the installation video in the Amazon listing before your installation, or