

# Rear Windshield for CFMOTO ZForce 950

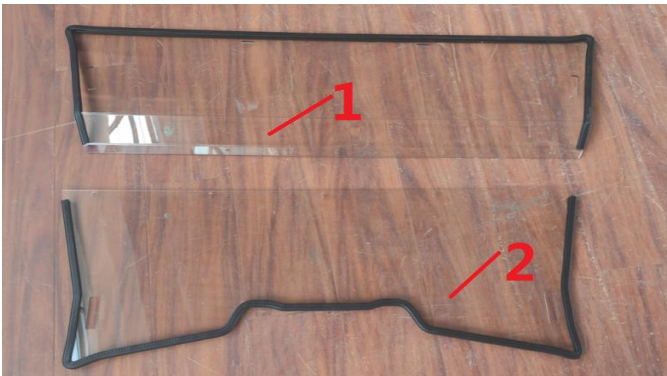
ZP-YJ-031211-004

## BEFORE YOU BEGIN

Read these instructions and check to be sure all parts and tools are accounted. Please retain these installation instructions for future reference.

This *Rear Windshield* is exclusively designed for your vehicle. Please read the installation instructions thoroughly before beginning. Installation is easier if the vehicle is clean and free of debris.

## KIT CONTENTS



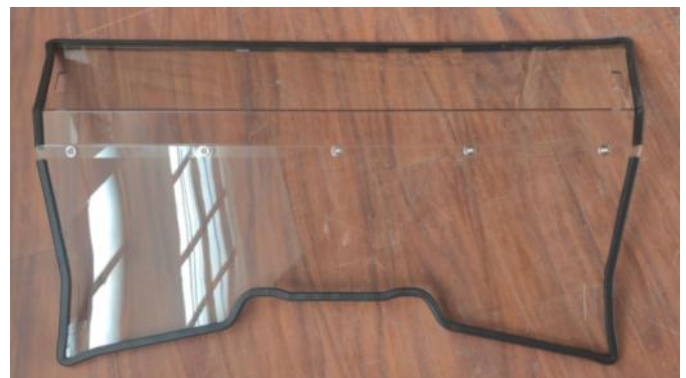
REF	PART DESCRIPTION	QTY
1	Windshield,part1	1
2	Windshield,part2	1
3	Clamp assembly	4
4	Ribbon	2
5	M6*20 hexagon screw	5
6	M6 flat pad	5
7	M6 lock nut	5

## ASSEMBLY TIME

Approximately 10 minutes.

## INSTALLATION INSTRUCTIONS

1. Shift vehicle transmission into "PARK". Turn key to "OFF" position and remove from vehicle.
2. Secure part ① and part ② with 5pcs M6\*20 hexagon screws, 5pcs M6 Flat pads and 5pcs M6 lock nuts.



## Rear Windshield for CFMOTO ZForce 950

ZP-YJ-031211-004

---

3. Install the rear windshield to the rear frame with 4pcs clamps③ and 2pcs ribbon④.



**Note:** Please refer to the installation video in the Amazon listing before your installation, or contact the seller for the installation video.