

# Turbo Hood Scoop with LED Spot Light for Polaris General 1000



ZP-YJ-030503-136

## BEFORE YOU BEGIN

Read these instructions and check to be sure all parts and tools are accounted for. Please retain these installation instructions for future reference.

## IMPORTANT

The *Turbo Hood Scoop with LED Spot Light* is exclusively designed for your vehicle. Please read the installation instructions thoroughly before beginning. Installation is easier if the vehicle is clean and free of debris. For your safety, and to ensure a satisfactory installation, perform all installation steps correctly in the sequence shown.

## INSTALLATION INSTRUCTIONS

Note: Shift vehicle transmission into "PARK". Turn key to "OFF" position and remove from vehicle.

Product picture



1. First remove the original hood scoop, take out the new hood scoop to install. As the picture shows:



2. When installing the new hood scoop, the limit brackets on the scoop need to be

correspondingly inserted into the slots on the cover decorative panel of the original vehicle, and then fix the hood with the original screws. As the picture shows:



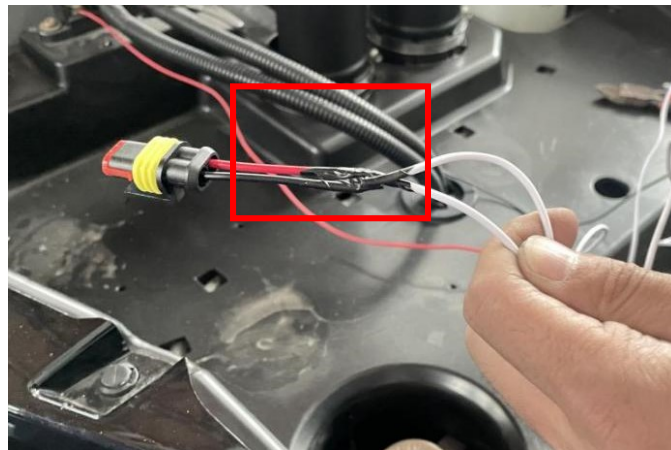
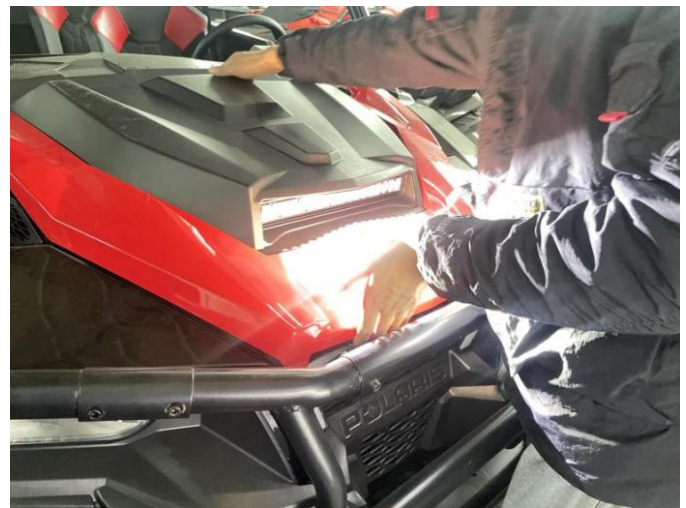
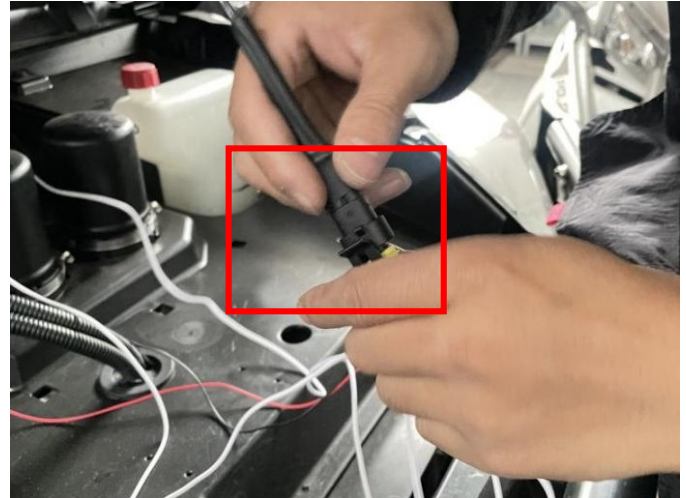


# Turbo Hood Scoop with LED Spot Light for Polaris General 1000



ZP-YJ-030503-136

3. Disconnect the wire harness plug-in on the hood light, then cut the extension wire in the package to a suitable length, and connect the extension wire to the wire harness of the hood scoop light respectively, and do insulation protection. Then connect the other end of the extension wire to the positive and negative poles of the original vehicle power supply respectively, and reconnect the wire harness plug-in of the hood scoop light. Finally, start the vehicle to check whether the spotlight is turned on normally. After checking, install the hood scoop back to the vehicle. As the picture shows.



4. Installation finished.



**Note:** Please refer to the installation video in the Amazon listing before your installation, or contact the seller for the installation video.