

LED Headlight Assembly for Honda Pioneer 700

ZP-YJ-030901-002

BEFORE YOU BEGIN

Read these instructions and check to be sure all parts and tools are accounted. Please retain these installation instructions for future reference.

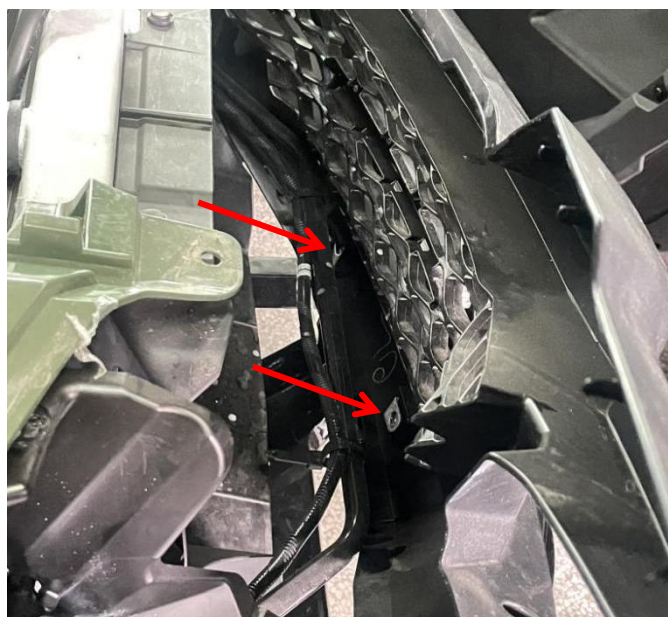
This *LED Headlight* is exclusively designed for your vehicle. Please read the installation instructions thoroughly before beginning. Installation is easier if the vehicle is clean and free of debris.

PRODUCT AND ACCESSORIES



INSTALLATION INSTRUCTIONS

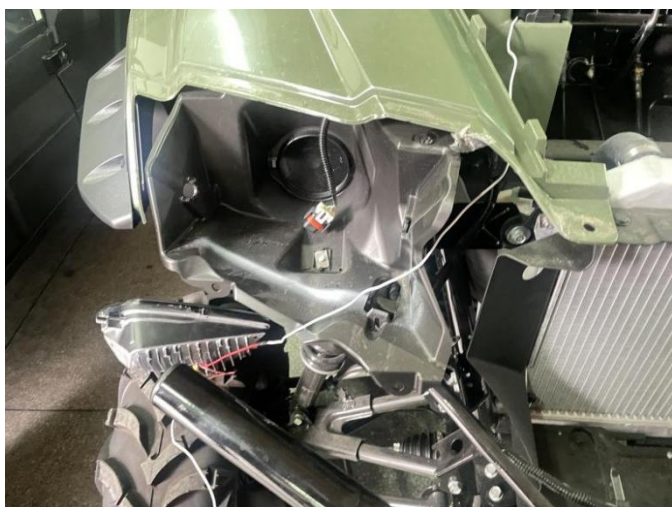
1. Shift vehicle transmission into "PARK". Turn key to "OFF" position and remove from vehicle.
2. First open the front cover of the vehicle, pry out all the Velcro fastening on the plastic front bar, and then remove the front bar (there are 2 fixing screws at the bottom of the plastic front bar, you need to loosen the screws to remove the front bar), unscrew the screws fixing the headlights, disconnect the wiring harness plug-in, and remove the original headlights. As the picture shows:



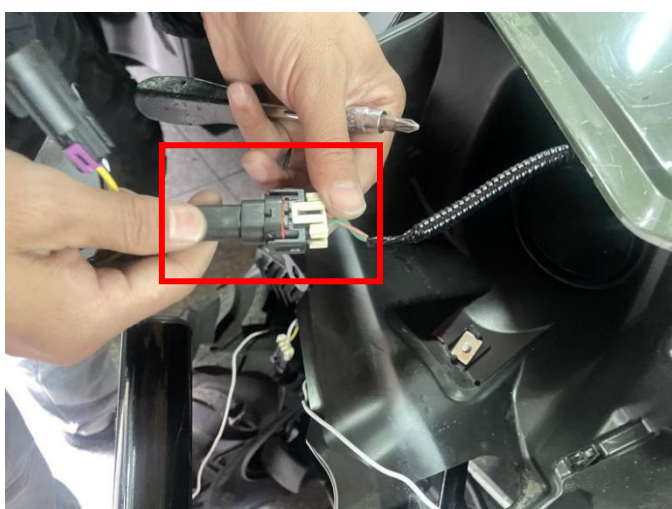
LED Headlight Assembly for Honda Pioneer 700

ZP-YJ-030901-002

SAUTVS®



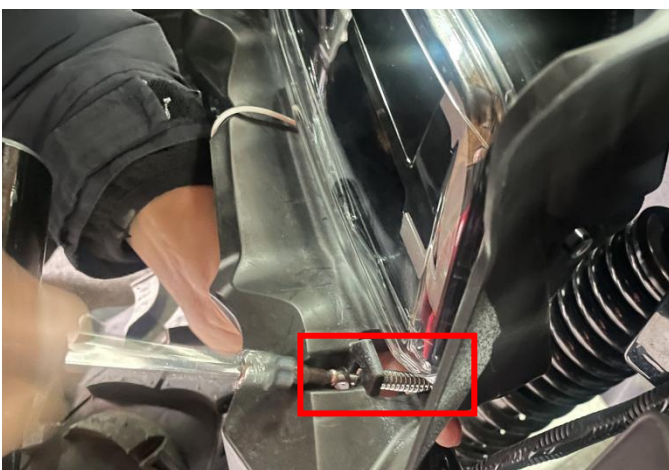
3. Take out the conversion cable and extension cable in the product package. Connect the plug-in on the vehicle harness to the plug-in on the conversion cable which corresponds to the vehicle harness plug-in, and connect the other end of the conversion cable to the new headlight wiring harness plug-in. Then connect one end of the extension cable to the red wire on the headlight and do insulation protection, and connect the other end of the extension cable to the battery box of the vehicle. (The new headlights have turn signal function, which can be connected according to your need). As the picture shows:



LED Headlight Assembly for Honda Pioneer 700

ZP-YJ-030901-002

4. After the wiring is completed, the headlight can be installed in the original way using the original screw fittings. (The headlights on the other side can be installed in the same way). As the picture shows:



5. Finally, install the plastic front bar back to the vehicle. As the picture shows:

Note: The screws at the bottom of the plastic front bar need to be screwed back from the bottom after installation.

LED Headlight Assembly for Honda Pioneer 700

ZP-YJ-030901-002

SAUTVS®

6.The installation is complete.



Note: Please refer to the installation video in the Amazon listing before your installation, or contact the seller for the installation video.