

BEFORE YOU BEGIN

Read these instructions and check to be sure all parts and tools are accounted for. Please retain these installation instructions for future reference.

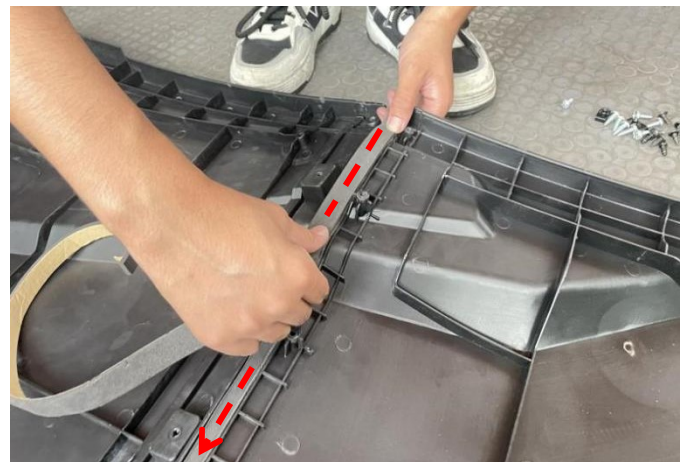
IMPORTANT

This Roof is exclusively designed for your vehicle. Please read the installation instructions thoroughly before beginning. Installation is easier if the vehicle is clean and free of debris. For your safety, and to ensure a satisfactory installation, perform all installation steps correctly in the sequence shown.

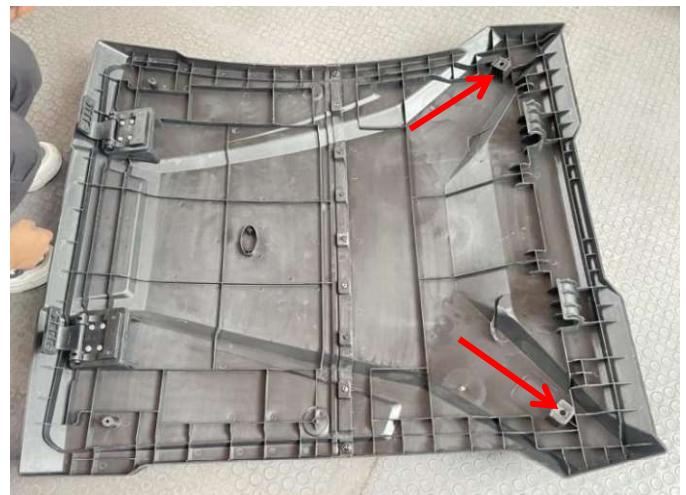
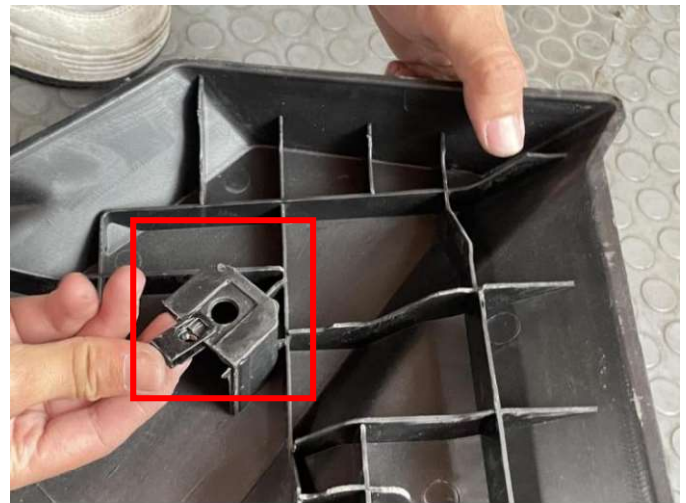
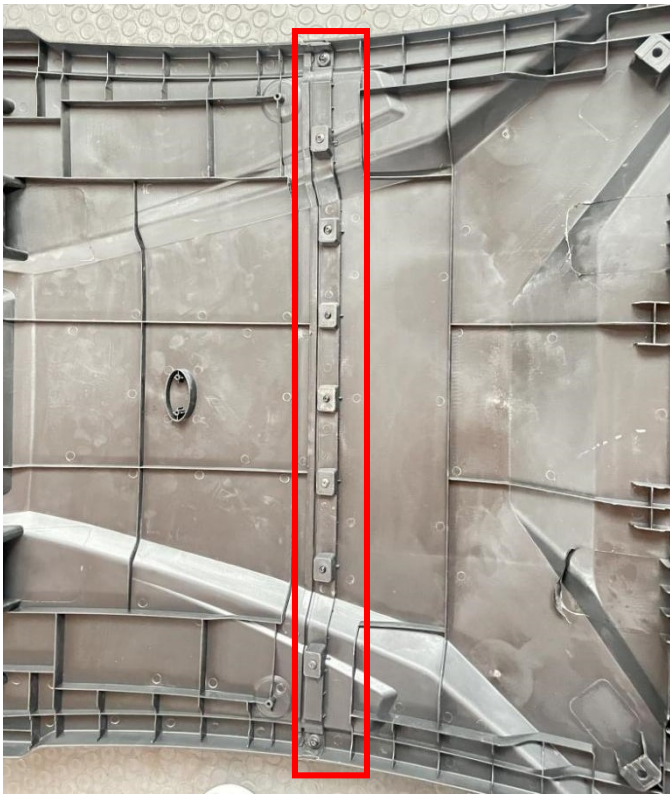
INSTALLATION INSTRUCTIONS

Note: Shift vehicle transmission into "PARK". Turn key to "OFF" position and remove from vehicle.

Product picture



1. Attach the sponge strip to the edge of the roof fitting surface, and then assemble the split roof into a whole with self-tapping screws. As the picture shows:

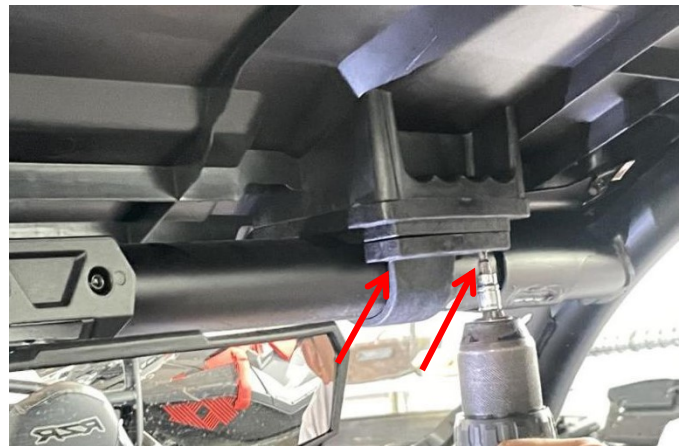


2. Fix the mounting buckles on the roof with self-tapping screws, and install the steel clips at the fixing holes on the roof. As shown in the picture:



3. Install the roof to the vehicle, and fix both sides of the front end of the roof with screws and nuts, and connect the rear end of the roof to the steel clips (in step 2) with screws to fix the four corners of the roof. Then wrap the limiting claws and mounting buckles on the roof around the frame. As shown in the picture:





5. Installation finished.



4. Finally, tighten the mounting buckles with screws. As shown in the picture:



Note: Please refer to the installation video in the Amazon listing before your installation, or contact the seller for the installation video.