

# Poly Sport Roof for Polaris RZR XP 1000 2024



ZP-YJ-030507-028

## BEFORE YOU BEGIN

Read these instructions and check to be sure all parts and tools are accounted for. Please retain these installation instructions for future reference.

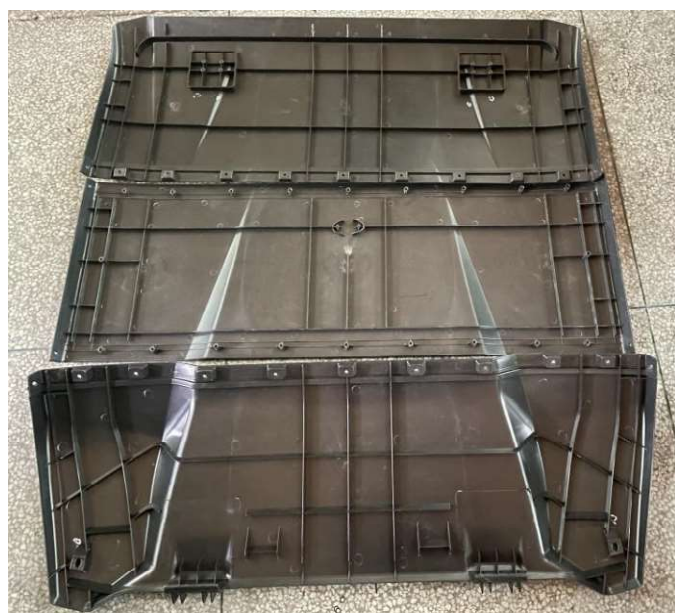
## IMPORTANT

*This Roof* is exclusively designed for your vehicle. Please read the installation instructions thoroughly before beginning. Installation is easier if the vehicle is clean and free of debris. For your safety, and to ensure a satisfactory installation, perform all installation steps correctly in the sequence shown.

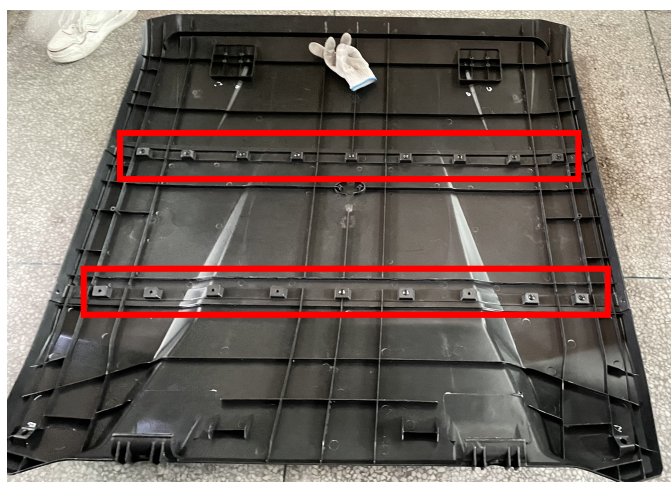
## INSTALLATION INSTRUCTIONS

Note: Shift vehicle transmission into "PARK". Turn key to "OFF" position and remove from vehicle.

Product and accessories picture



1. Prepare the sponge sealing strips in the product accessories bag and attach them to the junction edge of each piece of the roof. Combine the three pieces of the roof together, and use M5\*16 self-tapping screws to fix them. As the picture shows:



2. Fix with butt splint screws at the two ends of each splice. As the picture shows:

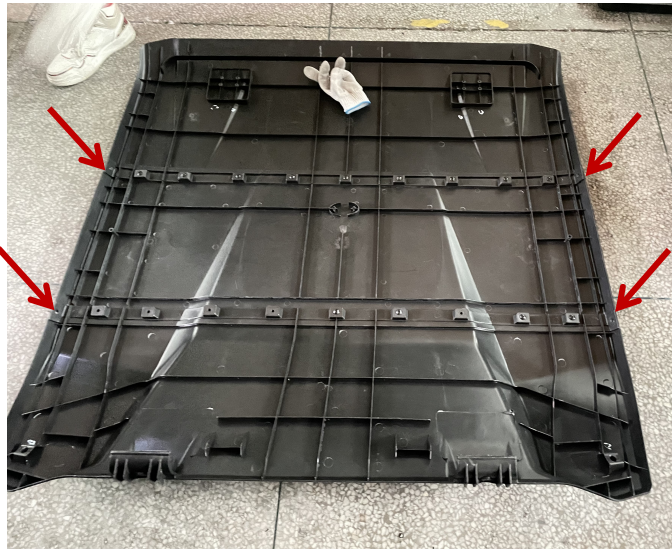




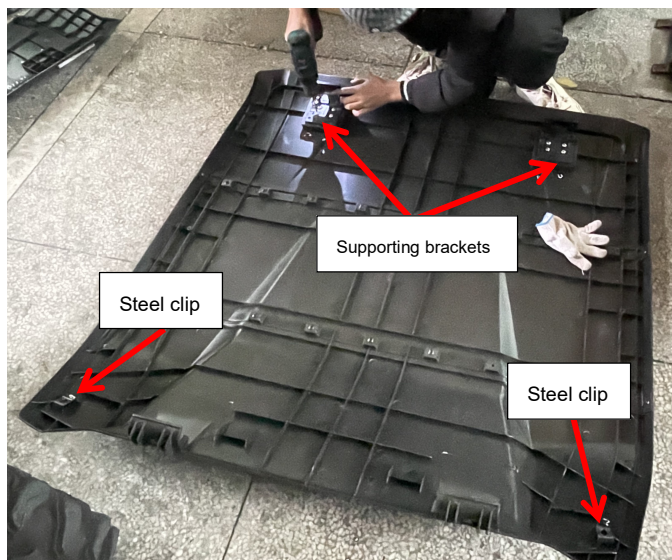
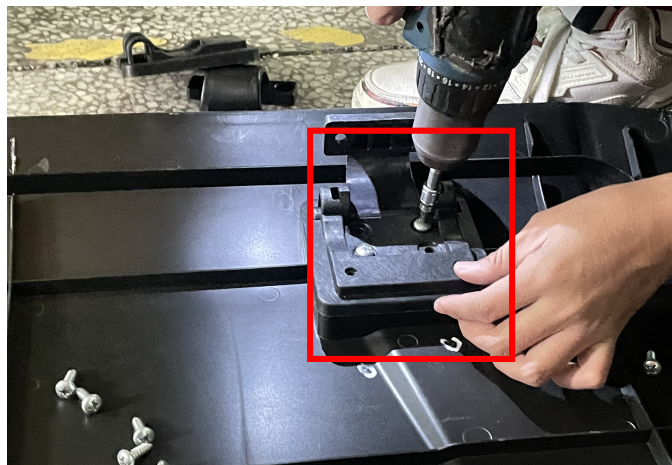
# Poly Sport Roof for Polaris RZR XP 1000 2024



ZP-YJ-030507-028



3. After assembling the matching supporting brackets, use M6\*16 self-tapping screws to fix the brackets on the roof, finally, place the steel clips in the place marked in the picture, as the picture shows:



4. Place the assembled roof on the original vehicle, and clamp the front and rear fixing hooks on the original vehicle frame (the screw holes on the fixing hooks at the rear of the roof should be aligned with the screw holes reserved on the original vehicle frame for subsequent screw fixing), locate the steel clips, and use M6\*20 screws to fix them. As the picture shows:





# Poly Sport Roof for Polaris RZR XP 1000 2024



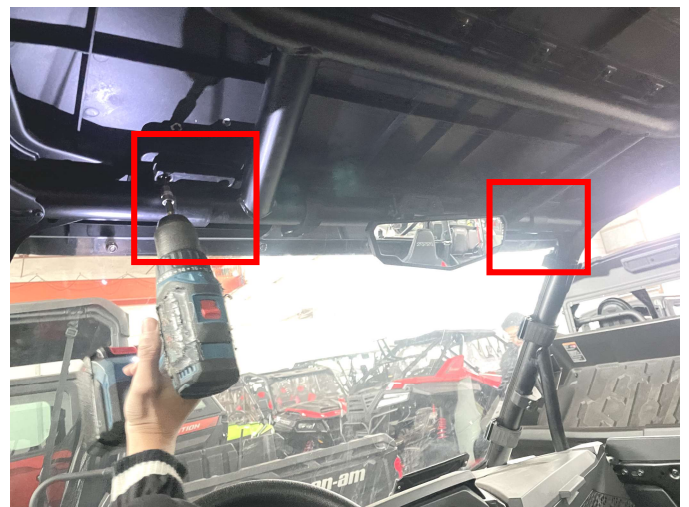
ZP-YJ-030507-028



5. Move to the rear cargo box of the vehicle, prepare 6mm screw tap, drill out the screw holes reserved on the vehicle, and then use the screws and washers to fix the roof on the vehicle. As the picture shows:



6. Finally, fix the supporting brackets on the roof top with self-tapping screws. As shown in the picture:



# Poly Sport Roof for Polaris RZR XP 1000 2024



ZP-YJ-030507-028

---

7. Installation finished.



**Note:** Please refer to the installation video in the Amazon listing before your installation, or contact the seller for the installation video.