

Poly Sport Roof for Polaris RZR XP 4 1000 2024



ZP-YJ-030507-029

BEFORE YOU BEGIN

Read these instructions and check to be sure all parts and tools are accounted for. Please retain these installation instructions for future reference.

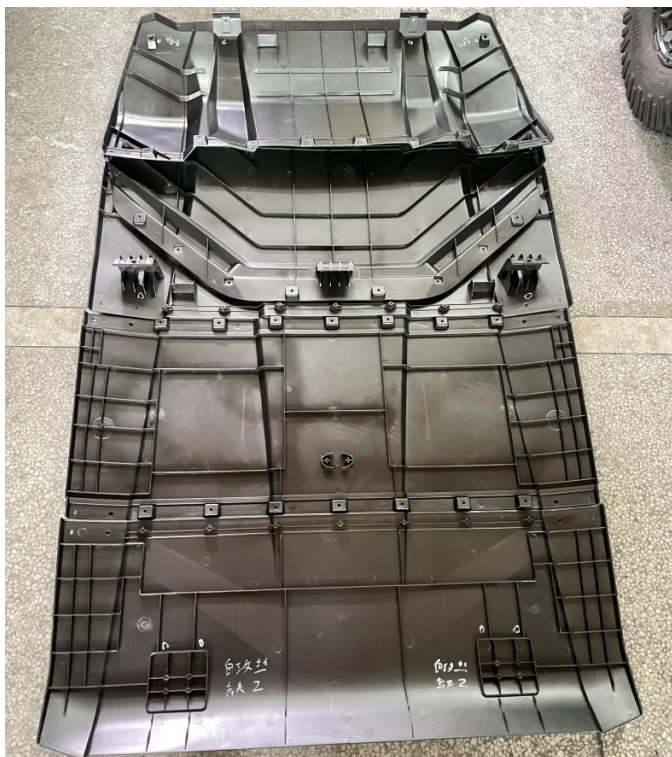
IMPORTANT

This Roof is exclusively designed for your vehicle. Please read the installation instructions thoroughly before beginning. Installation is easier if the vehicle is clean and free of debris. For your safety, and to ensure a satisfactory installation, perform all installation steps correctly in the sequence shown.

INSTALLATION INSTRUCTIONS

Note: Shift vehicle transmission into "PARK".
Turn key to "OFF" position and remove from vehicle.

Product and accessories picture



1. Prepare the sponge sealing strips in the product accessories bag and attach them to the junction edge of each piece of the roof.

Note: Cylindrical seal strips should be affixed to the grooves on the second piece of roof.



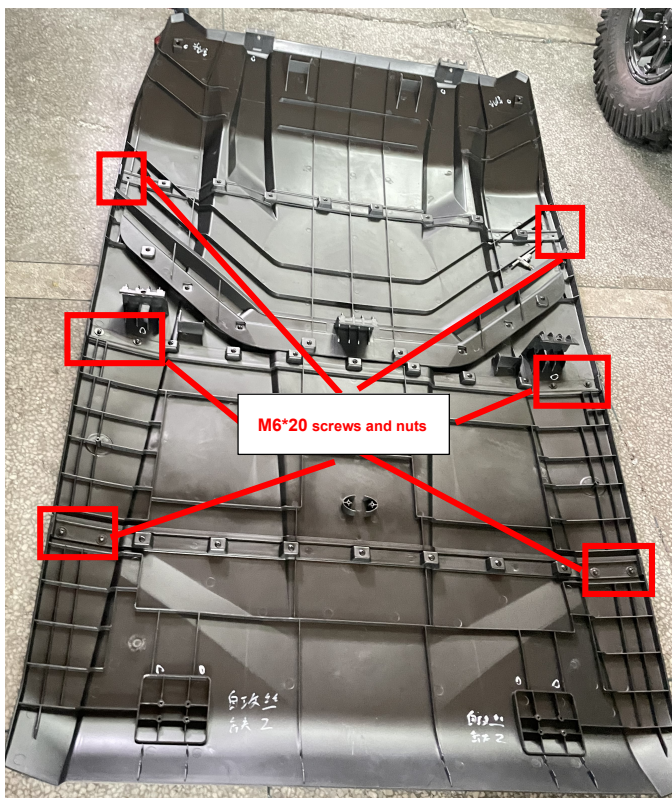
2. Combine the four pieces of the roof together with screws. As the picture shows:

Note: Use M6*20 screws and nuts at the two ends of each splice.

Poly Sport Roof for Polaris RZR XP 4 1000 2024



ZP-YJ-030507-029



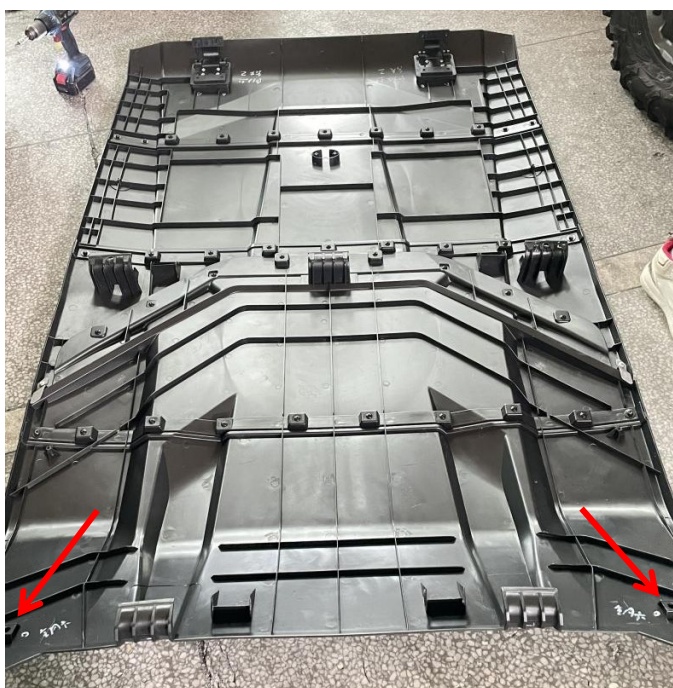
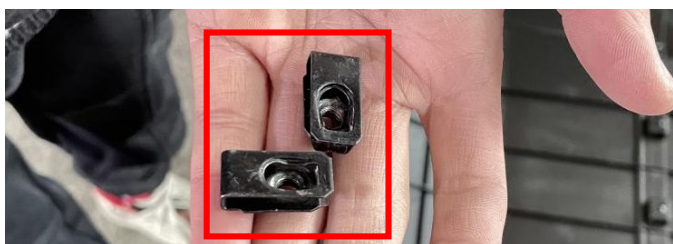
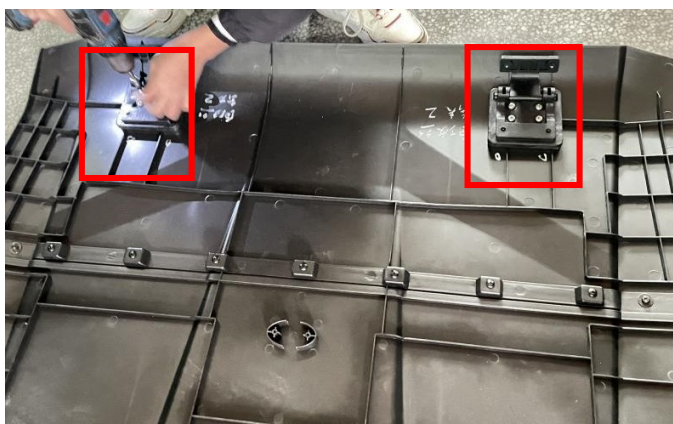
3. Fix the two iron brackets to the roof with self-tapping screws. As the picture shows:

4. After assembling the matching supporting brackets, use M6*16 self-tapping screws to fix the brackets on the roof, finally, place the steel clips in the place marked in the picture, as the picture shows:

Poly Sport Roof for Polaris RZR XP 4 1000 2024



ZP-YJ-030507-029



5. Place the assembled roof on the original vehicle, and clamp the front and rear fixing hooks on the original vehicle frame (the screw holes on the fixing hooks at the rear of the roof should be aligned with the screw holes reserved on the original vehicle frame for subsequent screw fixing), locate the steel clips, and use M6*16 screws to fix them. As the picture shows:



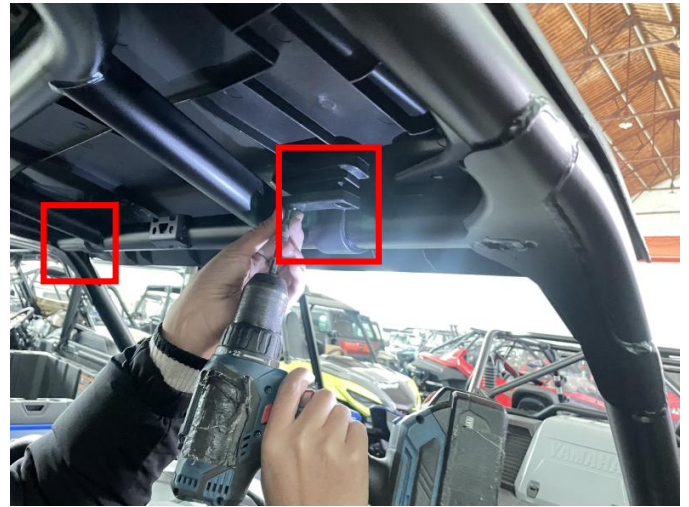
6. Move to the rear cargo box of the vehicle, prepare 6mm screw tap, drill out the screw holes reserved on the vehicle, and then use the screws and washers to fix the roof on the vehicle. As the picture shows:



Poly Sport Roof for Polaris RZR XP 4 1000 2024



ZP-YJ-030507-029



8. Installation finished.



7. Back to the cab, use screws to strengthen the middle section of the beam (drill out the fixing holes on the original bar with M6 screw tap in advance, and then use screws to fix them), finally, fix the supporting brackets of the front end with M6X20 hex socket screws. As shown in the picture:



Note: Please refer to the installation video in the Amazon listing before your installation, or contact the seller for the installation video.