

# Sport Hood Scoop with Mesh for CFMOTO ZFORCE 950

ZP-YJ-031203-002

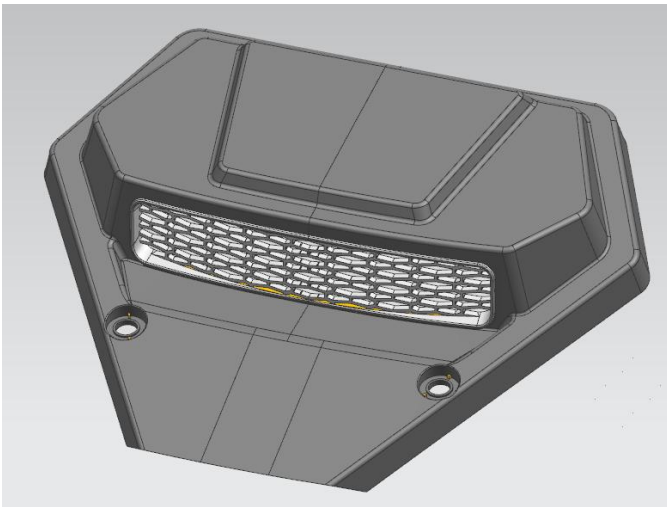
SAUTVS®

## BEFORE YOU BEGIN

Read these instructions and check to be sure all parts and tools are accounted. Please retain these installation instructions for future reference.

This *Sport Hood Scoop with Mesh* is exclusively designed for your vehicle. Please read the installation instructions thoroughly before beginning. Installation is easier if the vehicle is clean and free of debris.

## PRODUCT



3. Put the hood back on the vehicle and fasten the hood clips. The installation is complete.

## INSTALLATION INSTRUCTIONS

1. Shift vehicle transmission into "PARK". Turn key to "OFF" position and remove from vehicle.
2. Remove the original front hood of the vehicle first, and then remove the hood clips from old and install them on the new hood scoop. As the picture shows:



**Note:** Please refer to the installation video in the Amazon listing before your installation, or contact the seller for the installation video.