

Tail Lights for Honda Talon 1000



ZP-YJ-030902-010

BEFORE YOU BEGIN

Read these instructions and check to be sure all parts and tools are accounted for. Please retain these installation instructions for future reference.

These tail lights Mount is exclusively designed for your vehicle. Please read the installation instructions thoroughly before beginning. Installation is easier if the vehicle is clean and free of debris. For your safety, and to ensure a satisfactory installation, perform all installation steps correctly in the sequence shown.

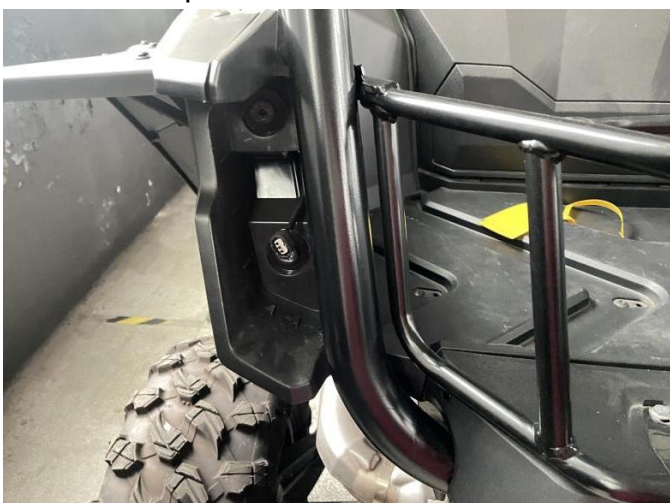
INSTALLATION INSTRUCTIONS

Note: Shift vehicle transmission into "PARK". Turn key to "OFF" position and remove from vehicle.

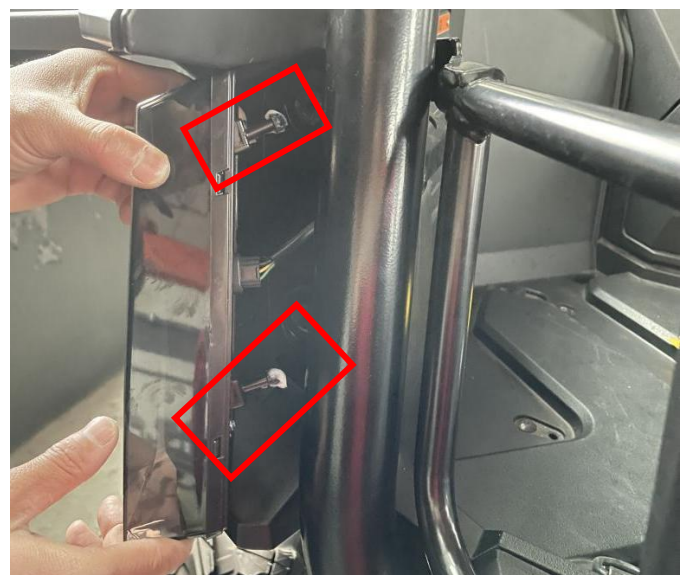
Product and accessories picture:



1. First, remove the original vehicle taillights and disconnect the wiring harness connectors. As shown in picture:



2. Connect the new tail light to the original vehicle wiring harness, and finally press the ball joint column on the rear shell of the new tail light firmly into the circular rubber hole of the original vehicle (you can add an appropriate amount of lubricating oil to the ball joint column for proper installation). (The tail light on the other side should be replaced and installed in the same way.) As shown in picture:

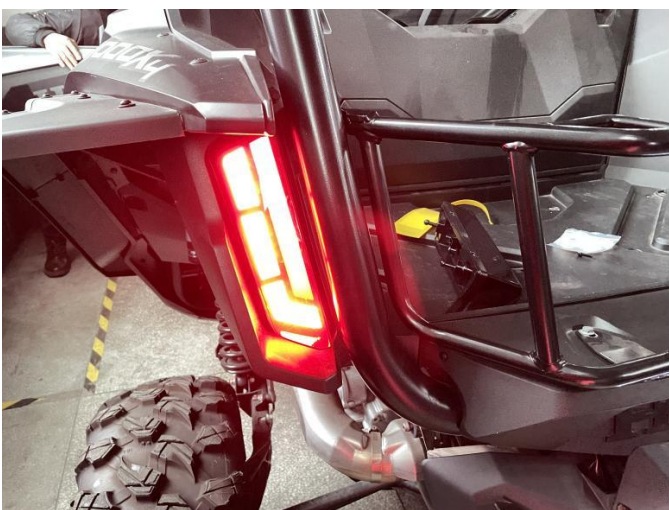
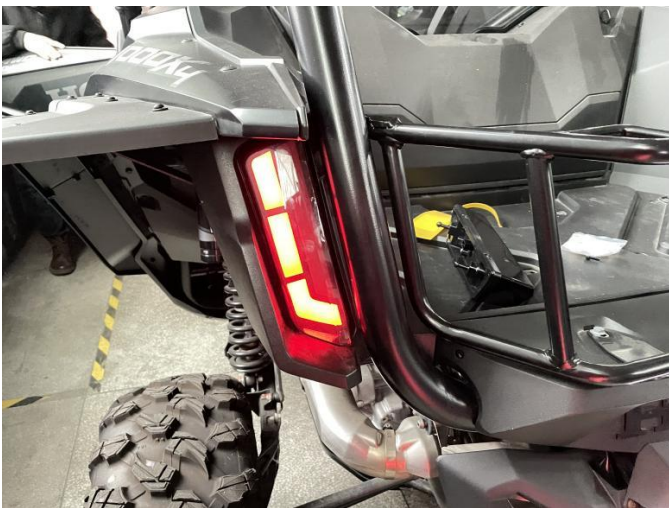


Tail Lights for Honda Talon 1000

ZP-YJ-030902-010



3. Installation is complete!



Note: Please refer to the installation video in the Amazon listing before your installation, or contact the seller for the installation video.