

Cargo Bed Light for Can-Am Commander



ZP-YJ-030602-043

BEFORE YOU BEGIN

Read these instructions and check to be sure all parts and tools are accounted for. Please retain these installation instructions for future reference.

The Cargo Bed Light is exclusively designed for your vehicle. Please read the installation instructions thoroughly before beginning. Installation is easier if the vehicle is clean and free of debris. For your safety, and to ensure a satisfactory installation, perform all installation steps correctly in the sequence shown.

INSTALLATION INSTRUCTIONS

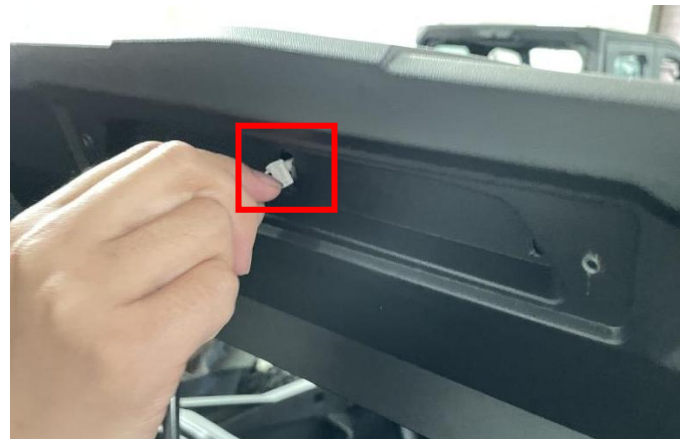
Note: Shift vehicle transmission into "PARK". Turn key to "OFF" position and remove from vehicle.

Product and accessories picture:



1. First, use a tool to drill a wire hole at the location where the cargo light is installed. Then, thread the cargo light harness through the wire hole and use the matching self tapping screws to fix the cargo light on the roof. As shown in picture:

Note: The size of the wire hole can allow the plug on the wire harness to pass through normally



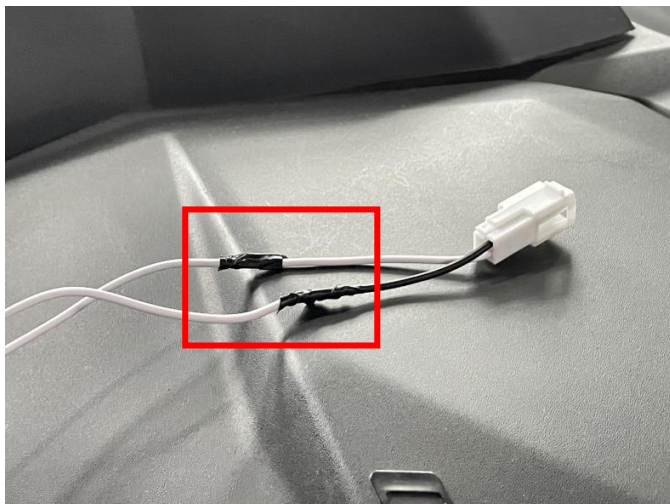
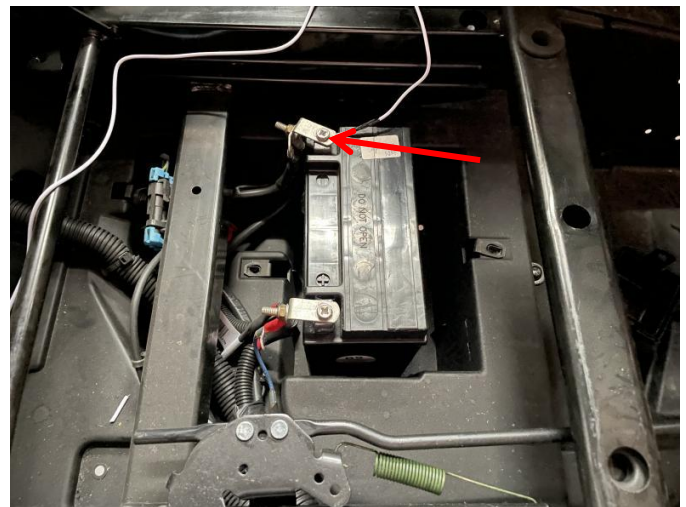
2. Connect extension cable (with insulation protection at the interface) to the matching adapter cable. Connect the extension cable that connects the white wire to the ACC

Cargo Bed Light for Can-Am Commander



ZP-YJ-030602-043

electrical box below the driver's steering wheel. Connect the extension cable that connects the black wire to the negative pole of the battery under the driver's seat. Then, connect the adapter cable to the cargo light harness. At this time, start the car to check if the cargo light is on normally. After confirming that it is correct, hide the exposed extension cable and reinstall the previously disassembled accessories. As shown in picture:



3. Installation is complete!



Cargo Bed Light for Can-Am Commander



ZP-YJ-030602-043



Note: Please refer to the installation video in the Amazon listing before your installation, or contact the seller for the installation video.