

# Sport Roof for Can-Am Defender MAX

ZP-YJ-030607-007

SAUTVS®

## BEFORE YOU BEGIN

Read these instructions and check to be sure all parts and tools are accounted. Please retain these installation instructions for future reference.

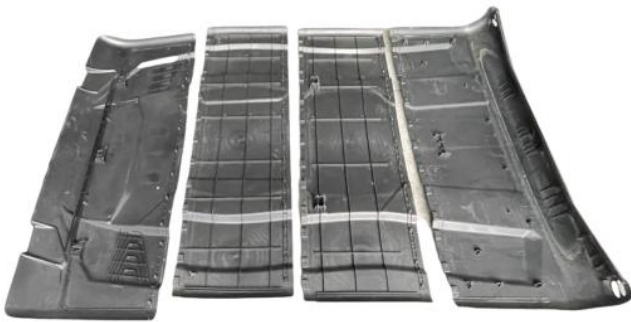
## IMPORTANT

This roof is exclusively designed for your vehicle. Please read the installation instructions thoroughly before beginning. Installation is easier if the vehicle is clean and free of debris.

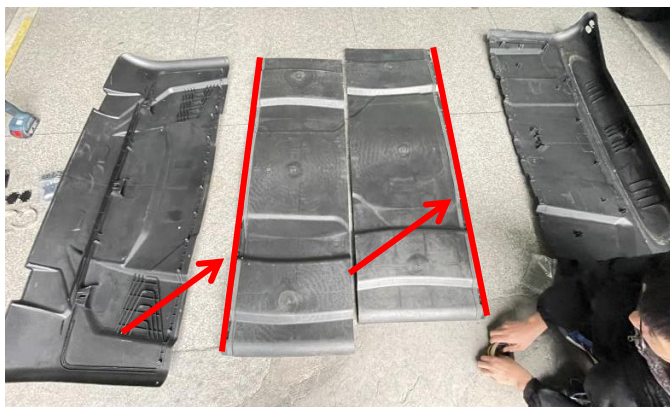
## INSTALLATION INSTRUCTIONS

Shift vehicle transmission into "PARK". Turn key to "OFF" position and remove from vehicle.

Product picture



1. First, stick the sponge strip with adhesive in the accessory package to the junction edge of the middle two roof panels (on the side of the roof surface), and then use M6 \* 16 self tapping screws to assemble the four roof panels into a whole. As the picture shows:



2. Use M5 \* 16 self tapping screws to secure the two mounting iron brackets to the roof. As the picture shows:

# Sport Roof for Can-Am Defender MAX

ZP-YJ-030607-007

SAUTVS®



3. Prepare a 6mm drill bit and secure it using M6 \* 16 screws and matching nuts according to the positioning holes on the roof (a flat pad is required on each screw). As the picture shows:

4. Install the assembled roof onto the original vehicle, place the pressure plate with nuts in the groove at the front of the roof, and fix it from below using M6 \* 16 screws. As the picture shows:

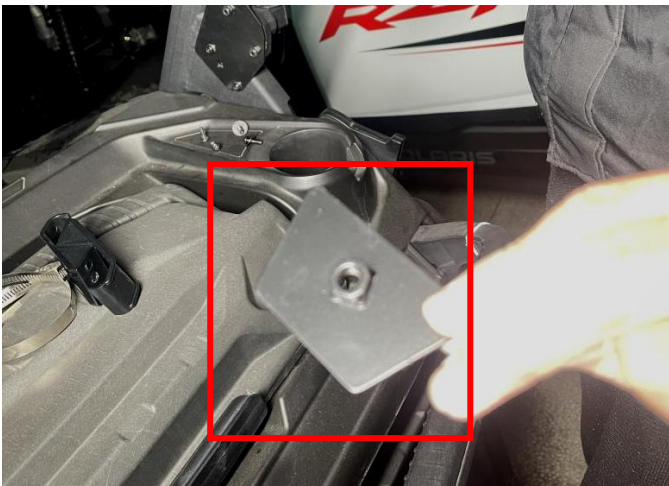




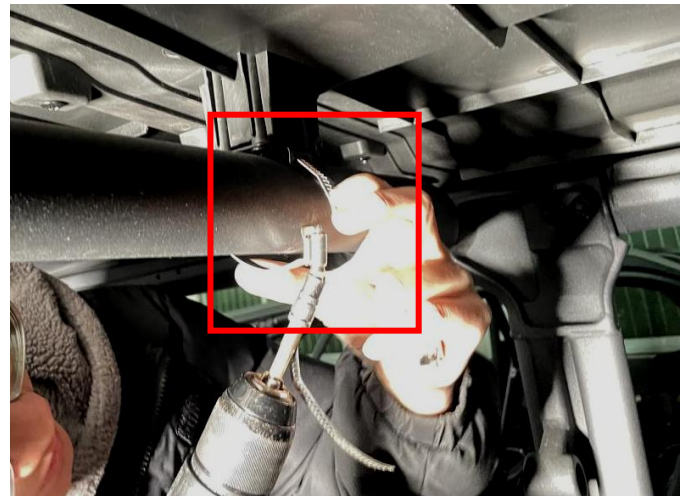
# Sport Roof for Can-Am Defender MAX

ZP-YJ-030607-007

SAUTV5



5. Thread the matching steel hoop through the installation bracket on the roof, wrap it around the crossbeam in the middle of the original vehicle, and then tighten the screws on the steel hoop. As the picture shows:





# Sport Roof for Can-Am Defender MAX

ZP-YJ-030607-007

6. Hook the fixing hook from the accessory package onto the side beam of the original car on one side, and use M5 \* 16 self tapping screws to fix it to the roof on the other side (1 on each side of the front row and 2 on each side of the rear row). As the picture shows:



7. Finally, use stainless steel hex screws to secure the iron pressure plate to both sides of the rear of the roof. As the picture shows:



8. Installation completed.



**Note:** Please refer to the installation video in the Amazon listing before your installation, or contact the seller for the installation video.