

Electronic Device Holder for Can-Am Defender MAX



ZP-YJ-030608-011

BEFORE YOU BEGIN

Read these instructions and check to be sure all parts and tools are accounted for. Please retain these installation instructions for future reference.

IMPORTANT

The Electronic Device Holder is exclusively designed for your vehicle. Please read the installation instructions thoroughly before beginning. Installation is easier if the vehicle is clean and free of debris. For your safety, and to ensure a satisfactory installation, perform all installation steps correctly in the sequence shown.

INSTALLATION INSTRUCTIONS

Note: Shift vehicle transmission into "PARK".
Turn key to "OFF" position and remove from vehicle.

Product picture



1. First, unscrew the two screws on the top and bottom of the original vehicle's gear box, then place the tablet holder on the dashboard, and then tighten the original vehicle screws back in place. As the picture shows:



2. Use the self tapping screws in the accessory package and fix them in sequence according to the positioning holes around the tablet holder. As the picture shows:

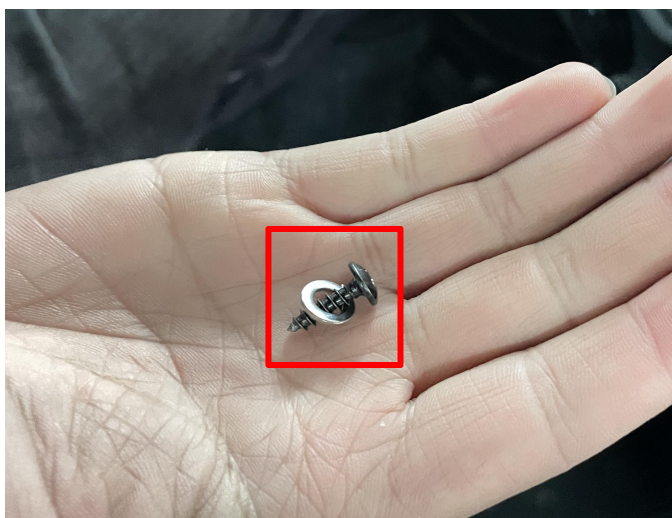
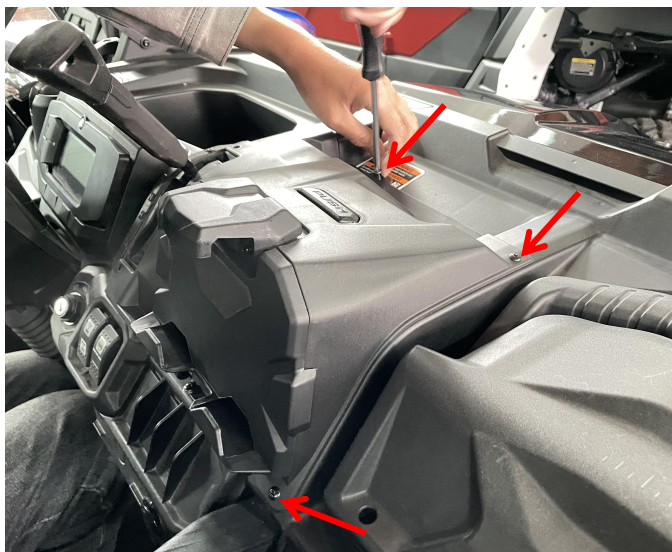
Note: There are two screws that need to be fixed after opening the tablet holder storage cover, and the screws need to be fitted with

Electronic Device Holder for Can-Am Defender MAX



ZP-YJ-030608-011

matching flat pads.



3. Installation completed!

Note: Please refer to the installation video in the Amazon listing before your installation, or contact the seller for the installation video.