

Front Grille Accent Lights for Yamaha Raptor 700

SAUTVS®

ZP-YJ-031102-014

BEFORE YOU BEGIN

Read these instructions and check to be sure all parts and tools are accounted for. Please retain these installation instructions for future reference.

IMPORTANT

These Grille Accent Lights are exclusively designed for your vehicle. Please read the installation instructions thoroughly before beginning. Installation is easier if the vehicle is clean and free of debris. For your safety, and to ensure a satisfactory installation, perform all installation steps correctly in the sequence shown.

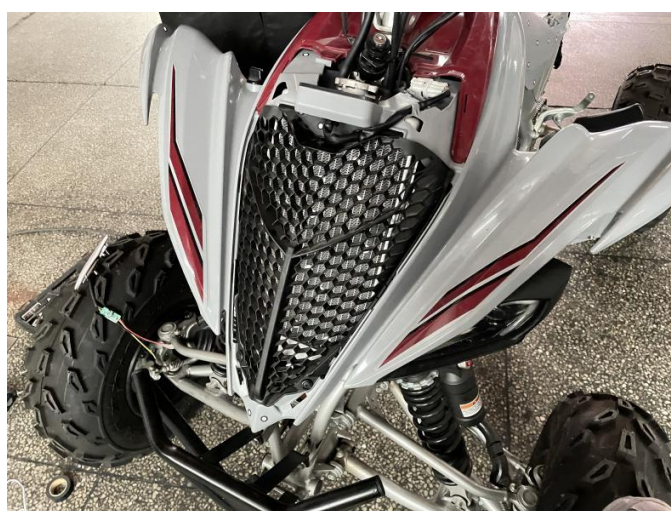
INSTALLATION INSTRUCTIONS

Note: Shift vehicle transmission into "PARK". Turn key to "OFF" position and remove from vehicle.

Product picture



1. First, remove the screws that secure the original vehicle's front fairing and remove the fairing. As the picture shows:



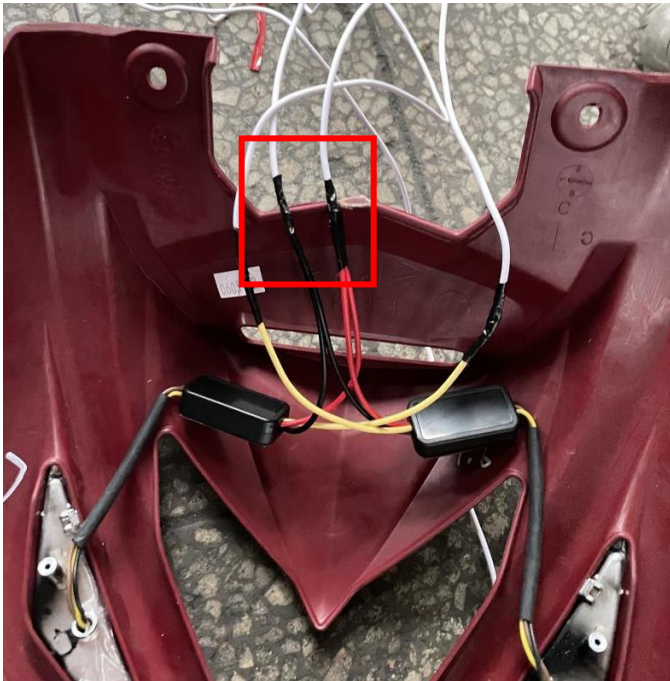
2. Prepare the extension cable in the accessory package, connect the black wire on the grille light to one extension cable, and the red wire to another extension cable (black is the negative wire, red is the positive wire). Then fix the two control boxes inside the front cover with double-sided tape (see the red frame line, as long as it does not affect the subsequent installation of the fairing, it can be done anywhere), and then pull the two extension cables through the gap of the vehicle to the seat cushion. After completion, the fairing can be installed back on the vehicle. As the picture shows:

Note: The yellow wire on the grille light is for turning function, and customers can arrange the wiring themselves.

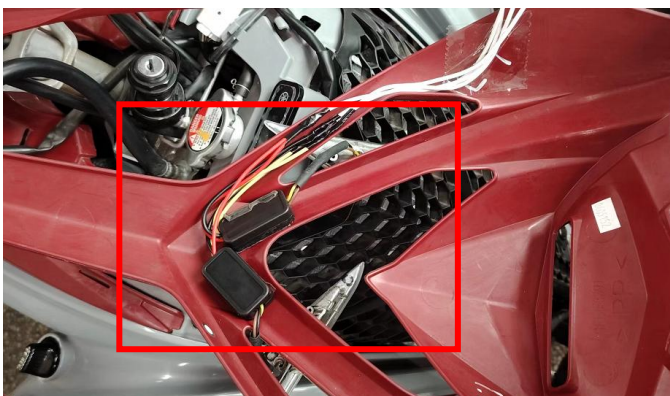
Front Grille Accent Lights for Yamaha Raptor 700



ZP-YJ-031102-014



3. Clamp the lights in the corresponding position on the front cover. As the picture shows:



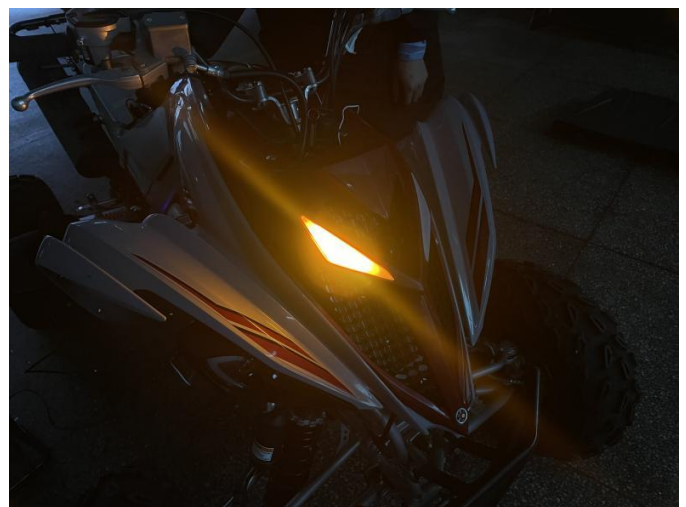
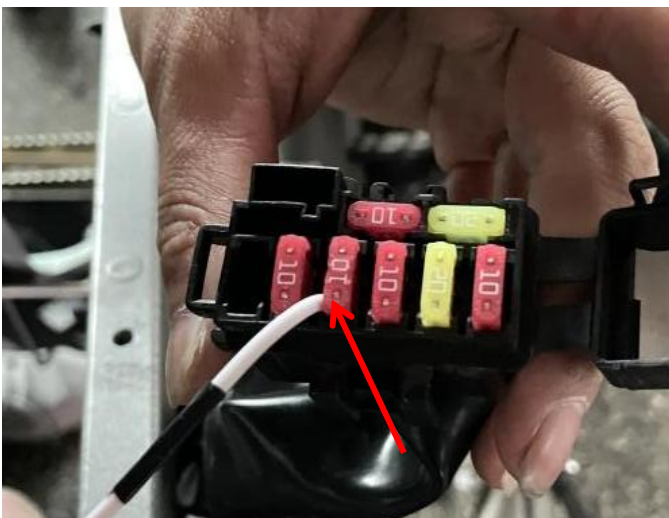
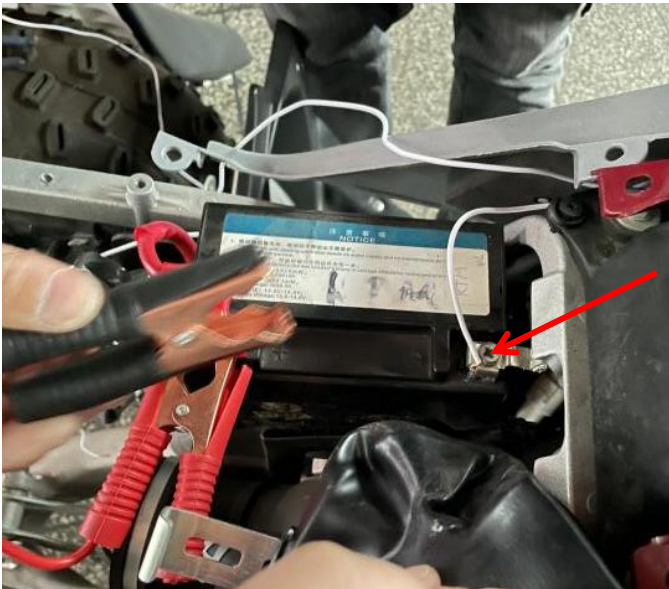
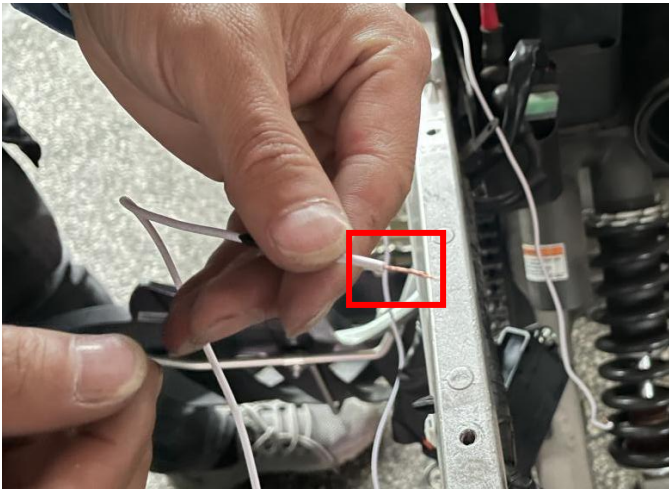
4. Remove the original vehicle seat cushion and locate the battery. Connect the black extension cable to the negative pole of the battery, and connect the red extension cable to the ACC electrical box (the extension cable needs to be broken to expose the copper wire). Finally, install the seat cushion. As the picture shows:



Front Grille Accent Lights for Yamaha Raptor 700



ZP-YJ-031102-014



5. The installation is complete.

Note: Please refer to the installation video in the Amazon listing before your installation, or contact the seller for the installation video.