

Dark Tinted Front Half Windshield for Can-Am Maverick R

ZP-YJ-030611-015

SAUTV5®

BEFORE YOU BEGIN

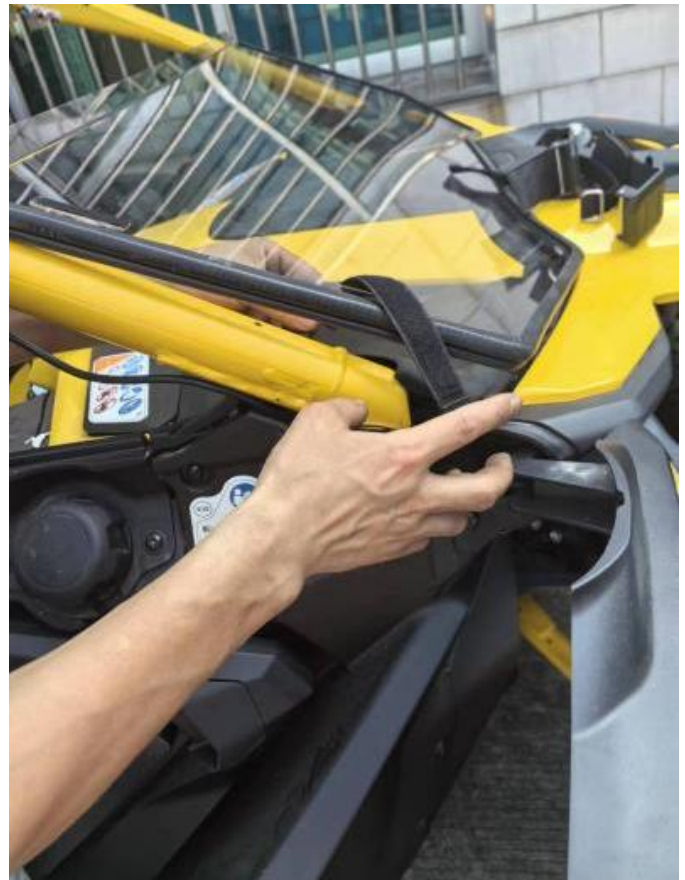
Read these instructions and check to be sure all parts and tools are accounted. Please retain these installation instructions for future reference.

IMPORTANT

This DARK TINTED FRONT HALF WINDSHIELD KIT is exclusively designed for your vehicle. Please read the installation instructions thoroughly before beginning. Installation is easier if the vehicle is clean and free of debris.

INSTALLATION INSTRUCTIONS

1. Shift vehicle transmission into "PARK". Turn key to "OFF" position and remove from vehicle.
2. Open the plastic covers on the left and right sides of the cab.
3. Secure the lower end of the half windshield to the front post with two small straps.



Dark Tinted Front Half Windshield for Can-Am Maverick R

ZP-YJ-030611-015

SAUTV5®



4. Secure the top end of the half windshield to the front post with two large straps. Installation completed.

