

BEFORE YOU BEGIN

Read these instructions and check to be sure all parts and tools are accounted for. Please retain these installation instructions for future reference.

The grille light is exclusively designed for your vehicle. Please read the installation instructions thoroughly before beginning. Installation is easier if the vehicle is clean and free of debris. For your safety, and to ensure a satisfactory installation, perform all installation steps correctly in the sequence shown.

INSTALLATION INSTRUCTIONS

Note: Shift vehicle transmission into "PARK". Turn key to "OFF" position and remove from vehicle.

Product and accessories picture:



1. First, install batteries in the spotlight controller, prepare a pair of tweezers or a art knife, pry it open along the edge of the controller's gap, then install 2 round batteries, and then close the controller. As shown in picture:

Note: The battery is not in the package and needs to be purchased by oneself. The battery model can refer to the picture.

- A: Color light mode 1
- B: Color light mode 2
- D: Spotlight mode
- C: Close



Mesh Grille with RGB Light for Can-Am Defender



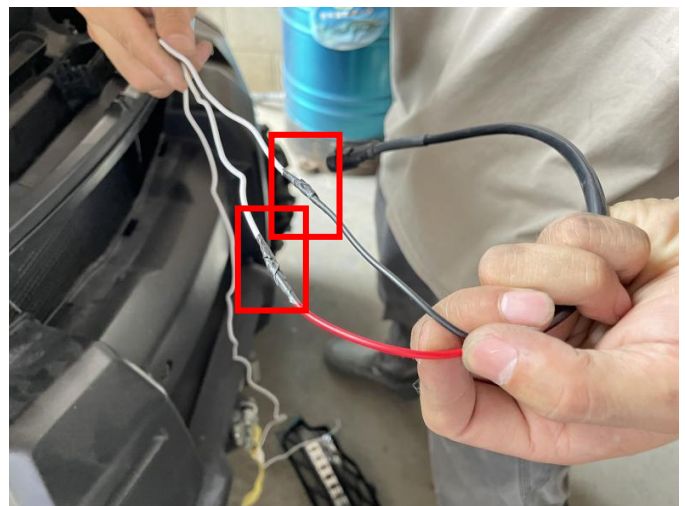
ZP-YJ-030503-151



2. First, open the original vehicle hood and remove the original vehicle grille. As shown in picture:



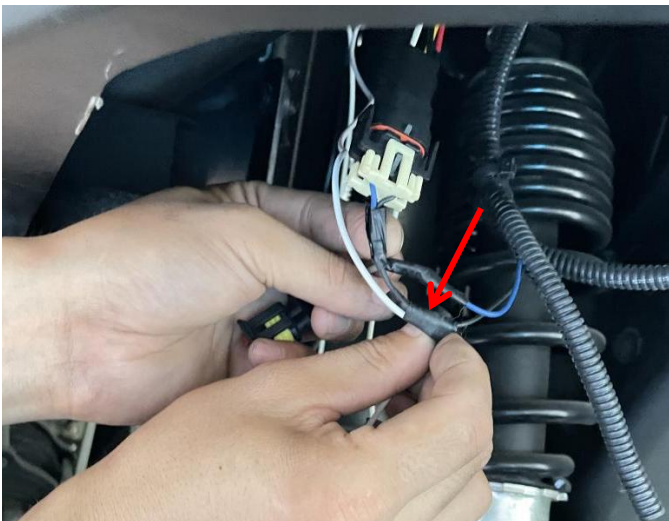
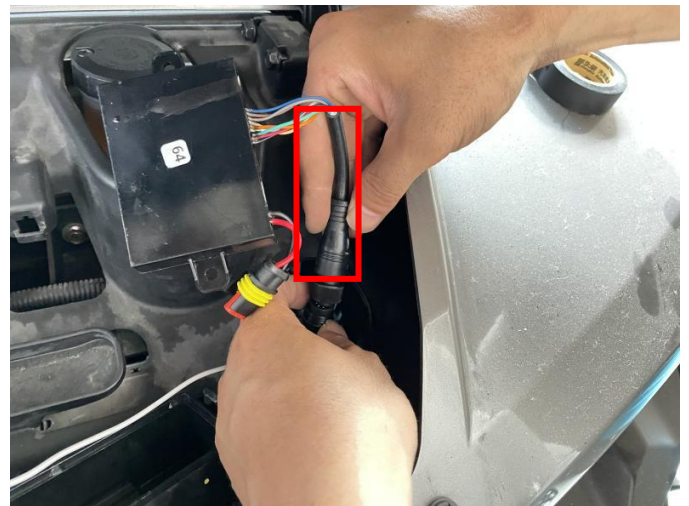
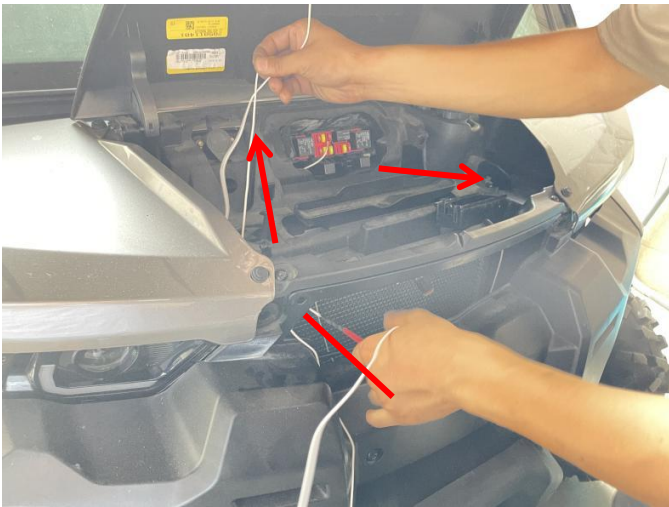
3. Disconnect the controller harness on the grille light, then prepare 2 extension wires. Connect the 2 extension wires to the just disconnected half of the harness, then pull the positive extension wire through the vehicle gap to the ACC electrical box and connect it to the electrical box. Pull the negative extension wire to the original headlight and connect it to the black wire on the headlight harness. The interface needs to be insulated and protected. As shown in picture:



Mesh Grille with RGB Light for Can-Am Defender



ZP-YJ-030503-151



4. After reconnecting the previously disconnected middle grille light harness, the double-sided adhesive film on the surface of the drive box can be peeled off, and the drive box can be affixed to the original vehicle gap. As shown in picture:

5. Finally, start the vehicle and test whether the spotlights are working properly. After confirming that there are no errors, install the grille and close the hood. As shown in picture:

Mesh Grille with RGB Light for Can-Am Defender



ZP-YJ-030503-151



6. Installation completed!

Note: Please refer to the installation video in the Amazon listing before your installation, or contact the seller for the installation video.