

BEFORE YOU BEGIN

Read these instructions and check to be sure all parts and tools are accounted. Please retain these installation instructions for future reference.

IMPORTANT

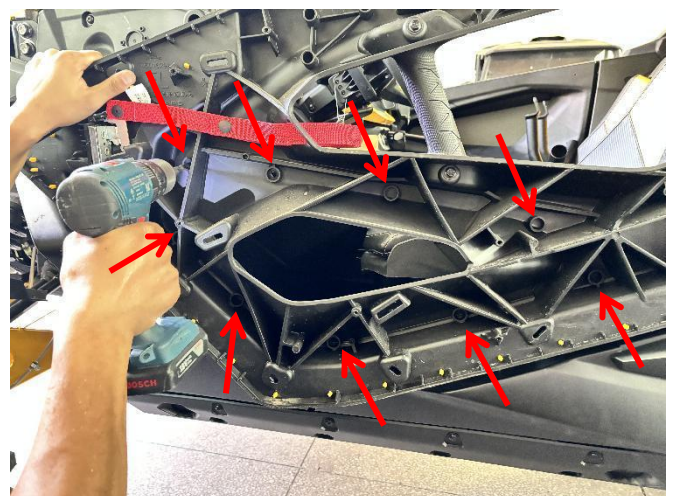
This DOOR SPEAKER PANELS KIT is exclusively designed for your vehicle. Please read the installation instructions thoroughly before beginning. Installation is easier if the vehicle is clean and free of debris.

INSTALLATION INSTRUCTIONS

1. Shift vehicle transmission into "PARK". Turn key to "OFF" position and remove from vehicle.
2. Product image.

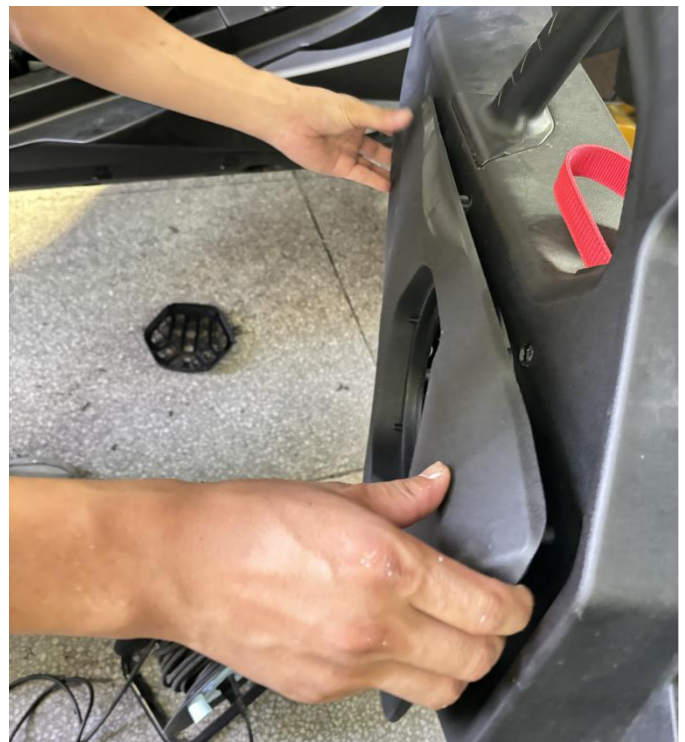
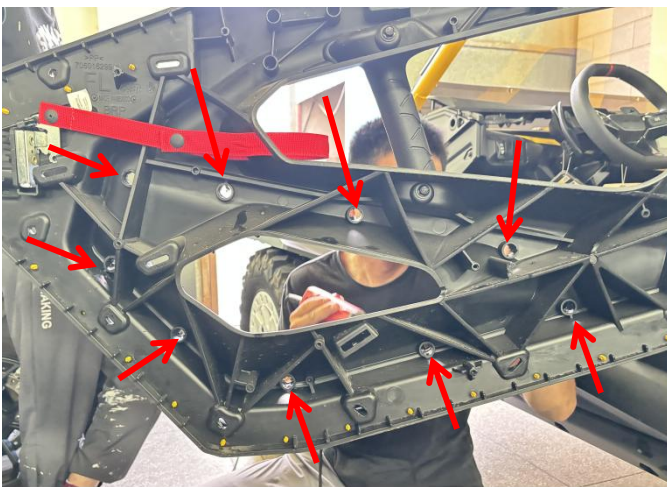


3. Remove the original outer door panels first, then prepare an 8MM drill bit and drill the holes according to the circular positioning holes on the door frame.



Door Speaker Panels for Can-Am Maverick R

4. Use an electric grinder to enlarge the hole you just drilled.



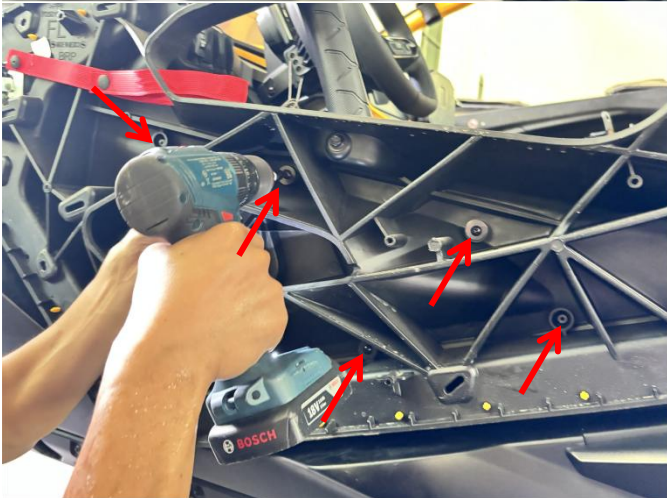
5. Mount the speaker bracket on the door frame from the inside, and then use M5*16 self-tapping screws and matching spacers to fix it from the outside.

(Note: When installing the speaker bracket, you need to snap the surface of the screw posts correspondingly into the locating holes just expanded.)

Door Speaker Panels for Can-Am Maverick R



7. Installation completed.



6. After installing the speaker, you can use M4 *16 self-tapping screws to fix the sound decorative frame on the speaker bracket, and then finally install the vehicle's original exterior door panels back to the original position can be (the other side of the speaker bracket according to the same way as above to install).

Note: Please refer to the installation video in the Amazon listing before your installation, or contact the seller for the installation video.

