

# Taillight for Polaris Ranger XD 1500

ZP-YJ-030501-023

SAUTV5

## BEFORE YOU BEGIN

Read these instructions and check to be sure all parts and tools are accounted. Please retain these installation instructions for future reference.

This *Taillight* is exclusively designed for your vehicle. Please read the installation instructions thoroughly before beginning. Installation is easier if the vehicle is clean and free of debris.

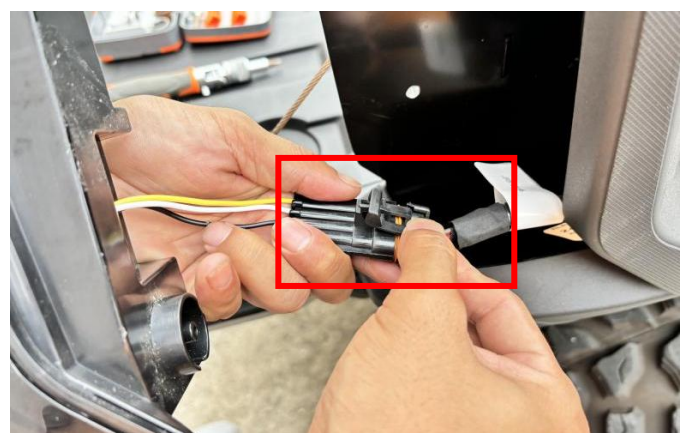
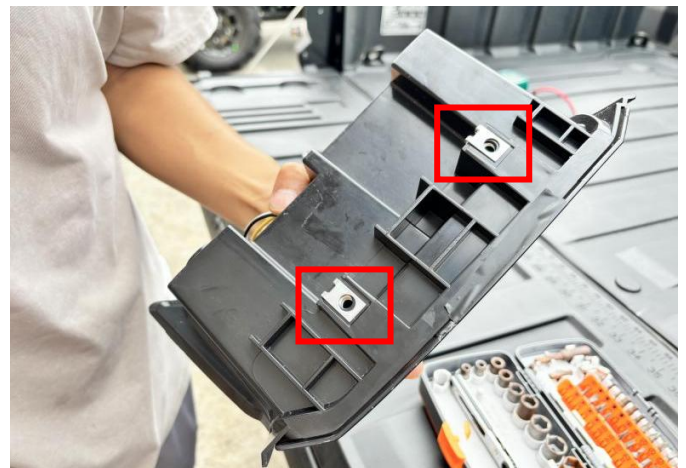
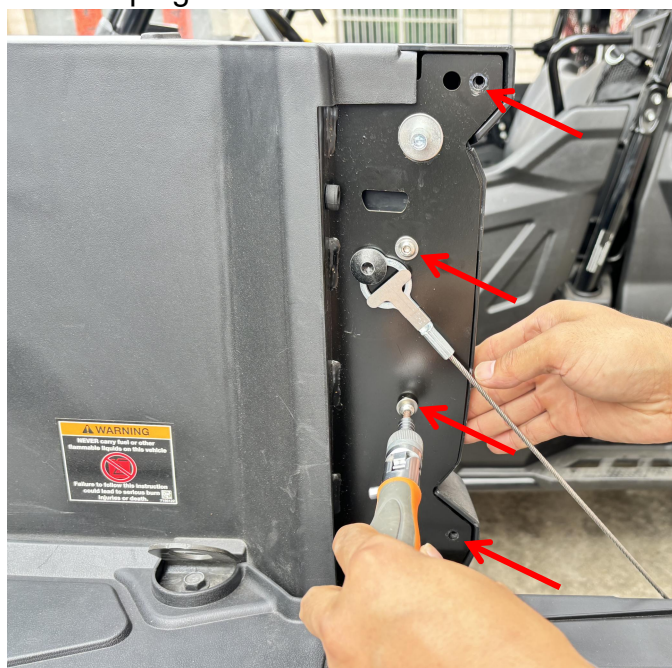
## PRODUCT AND ACCESSORIES



## INSTALLATION INSTRUCTIONS

1. Shift vehicle transmission into "PARK". Turn key to "OFF" position and remove from vehicle.
2. Open the rear door and unscrew the taillight, then remove the taillight and disconnect the harness plug-in.

3. Attach the steel clamp of the new taillight to the back housing, then connect its plug-in to the vehicle, and then install the taillight.



# Taillight for Polaris Ranger XD 1500

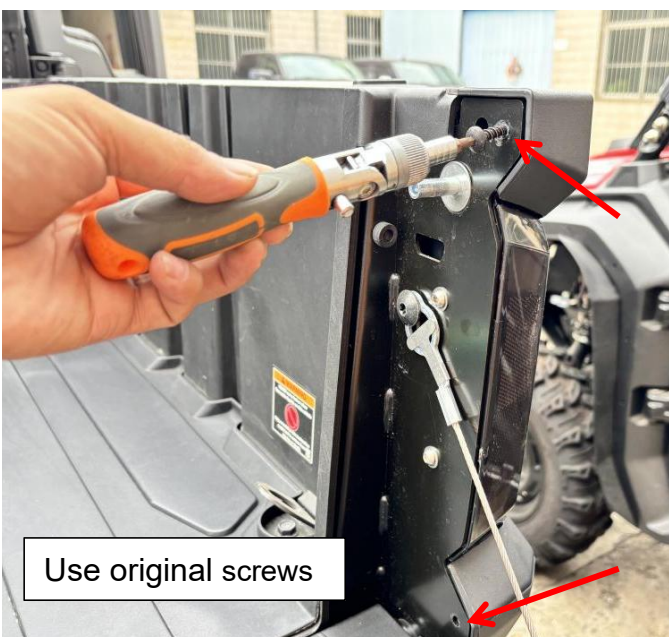
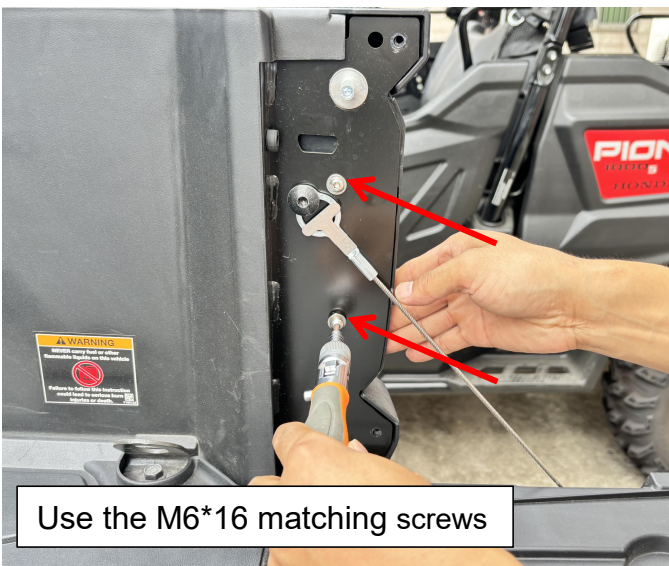
ZP-YJ-030501-023

SAUTV5



4. Finally, use the matching screws and the original screws to fix it. (The other side can be installed in the same way.)

5. The installation is complete.



**Note:** Please refer to the installation video in the Amazon listing before your installation, or contact the seller for the installation video.