

Turbo Hood Scoop for Polaris General 1000



ZP-YJ-030503-137

BEFORE YOU BEGIN

Read these instructions and check to be sure all parts and tools are accounted for. Please retain these installation instructions for future reference.

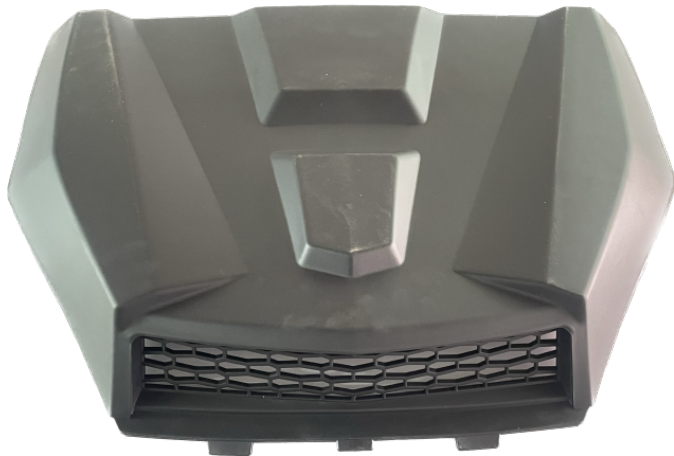
IMPORTANT

The *Turbo Hood Scoop* is exclusively designed for your vehicle. Please read the installation instructions thoroughly before beginning. Installation is easier if the vehicle is clean and free of debris. For your safety, and to ensure a satisfactory installation, perform all installation steps correctly in the sequence shown.

INSTALLATION INSTRUCTIONS

Note: Shift vehicle transmission into "PARK". Turn key to "OFF" position and remove from vehicle.

Product picture



1. First remove the original hood scoop, take out the new turbo hood scoop to install. As the picture shows:

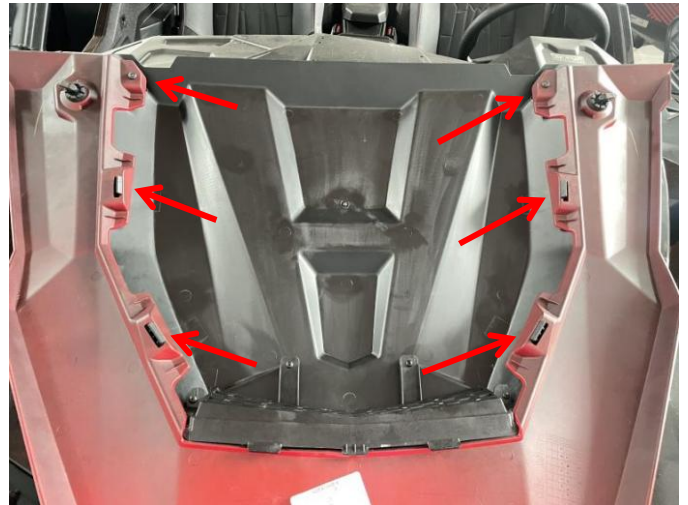


2. When installing the new hood, the limit brackets on the hood need to be correspondingly inserted into the slots on the decorative panel of the original vehicle, and then fix the hood with the original screws. As the picture shows:

Note: When inserting the limit brackets, you can place the hood and the decorative panel vertically on the ground, put your hands on both sides of the inside and outside of the hood, and press down and forward with your palms at the same time to make the limit brackets fit into the slots.

Turbo Hood Scoop for Polaris General 1000

ZP-YJ-030503-137



3. Installation finished.



Note: Please refer to the installation video in the Amazon listing before your installation, or contact the seller for the installation video.

