

BEFORE YOU BEGIN

Read these instructions and check to be sure all parts and tools are accounted for. Please retain these installation instructions for future reference.

These Side Mirrors are exclusively designed for your vehicle. Please read the installation instructions thoroughly before beginning. Installation is easier if the vehicle is clean and free of debris. For your safety, and to ensure a satisfactory installation, perform all installation steps correctly in the sequence shown.

INSTALLATION INSTRUCTIONS

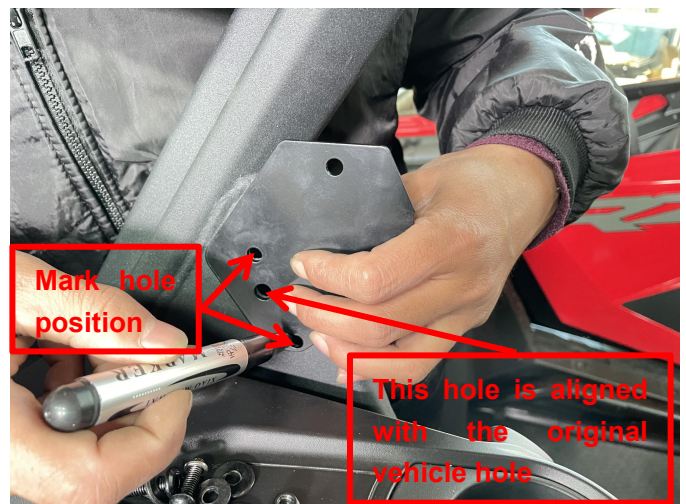
Note: Shift vehicle transmission into "PARK". Turn key to "OFF" position and remove from vehicle.

Product and accessories picture:



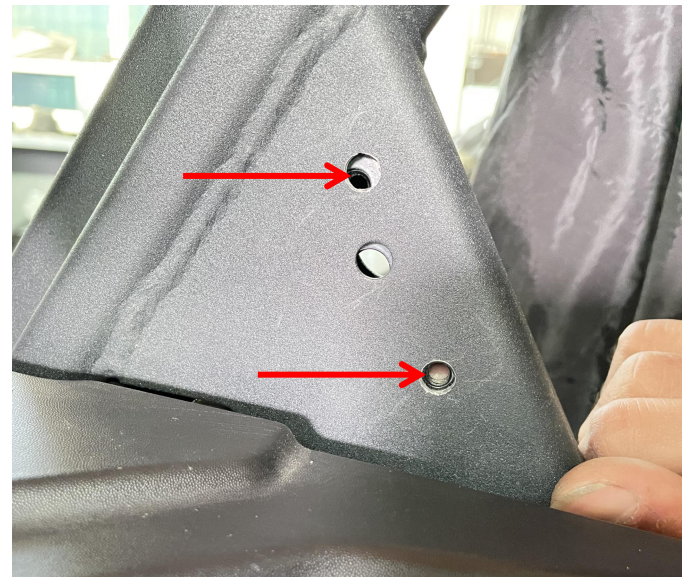
Installation steps for the right side mirror

1. First, prepare the installation plate in the product accessory package, distinguish the left and right sides, and place the right installation plate on the original vehicle A-pillar as shown in the picture. The middle hole on the installation plate needs to be aligned with the hole on the A-pillar. Then, use a marker pen to mark the remaining two fixing holes. Finally, use a 7mm drill bit to drill fixing holes on the A-pillar according to the marked points. As shown in picture:

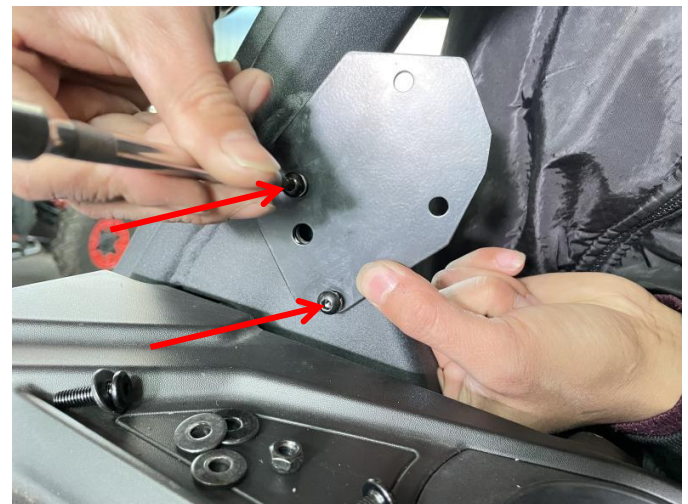




2. Through the notch below the A-pillar of the original vehicle, place the connecting bracket with the nut in the inner wall of the A-pillar of the original vehicle, opposite to the fixed hole just made (this step requires patience, do not hurry).As shown in picture:



3. After completing step 2, the installation plate can be fixed to the original A-pillar with screws.As shown in picture:



4. Fix the ball head bracket of the side mirror on the rear shell with self tapping screws (the

bracket needs to be distinguished on the left and right sides, do not install incorrectly), and finally use the matching screws and nuts to fix the side mirror on the installation plate. (Install the side mirror on the other side according to the same steps above.). As shown in picture:

5. Installation finished.



Note: Please refer to the installation video in the Amazon listing before your installation, or contact the seller for the installation video.

