

Seat Base Assembly for Polaris RZR XP 1000 / XP 4 1000 2014-2023



BEFORE YOU BEGIN

Read these instructions and check to be sure all parts and tools are accounted for. Please retain these installation instructions for future reference.

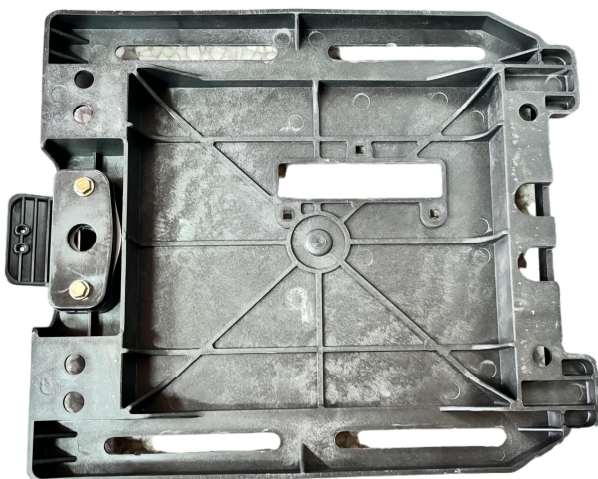
IMPORTANT

This *Seat Base Assembly* is exclusively designed for your vehicle. Please read the installation instructions thoroughly before beginning. Installation is easier if the vehicle is clean and free of debris. For your safety, and to ensure a satisfactory installation, perform all installation steps correctly in the sequence shown.

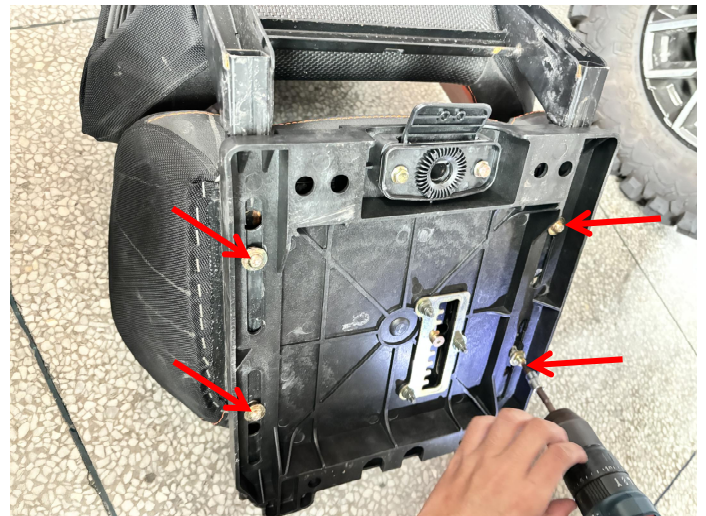
INSTALLATION INSTRUCTIONS

Note: Shift vehicle transmission into "PARK". Turn key to "OFF" position and remove from vehicle.

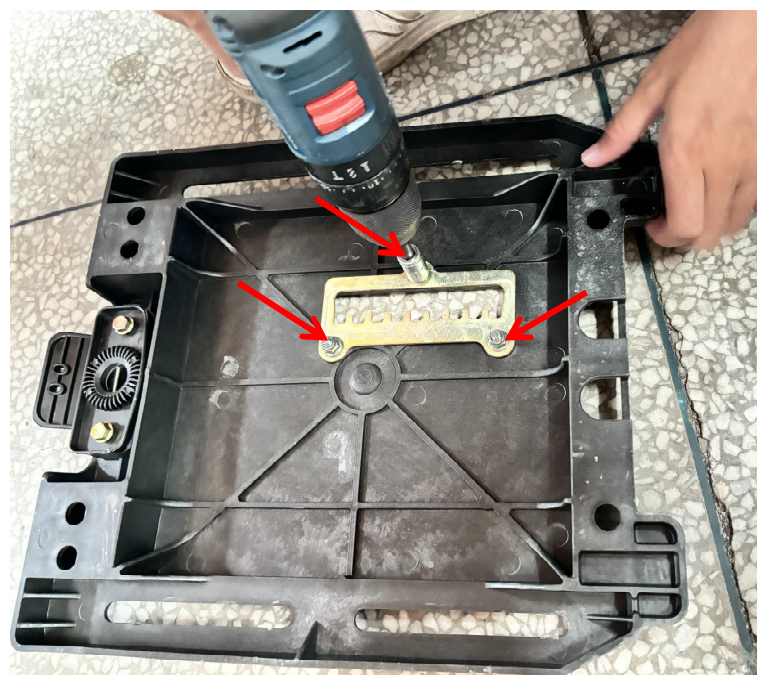
Product picture



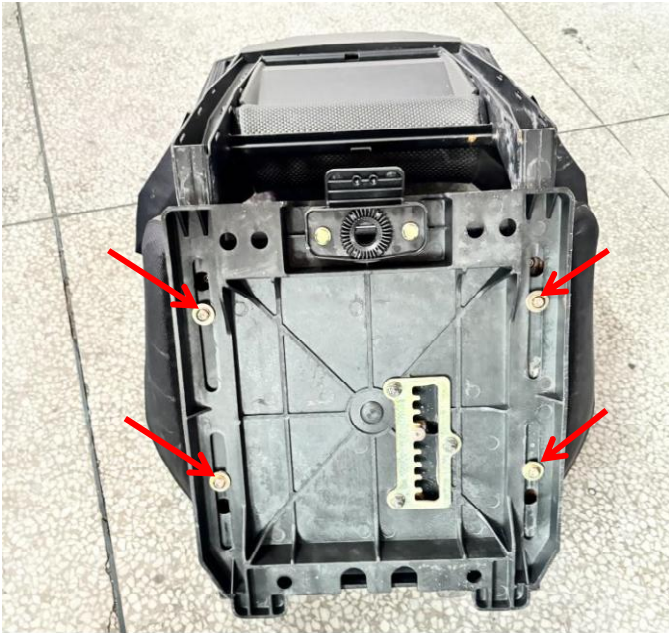
1. First remove the original seat of the vehicle, and then remove the adjustment base under the seat. As the picture shows:



2. Remove the iron limit bracket from the original base and install it on the new base. Install the new base under the original seat and fix it with the original screws. As the picture shows:



Seat Base Assembly for Polaris RZR XP 1000 / XP 4 1000 2014-2023



3. The installation is complete.



Note: Please refer to the installation video in the Amazon listing before your installation, or contact the seller for the installation video.