

BEFORE YOU BEGIN

Read these instructions and check to be sure all parts and tools are accounted for. Please retain these installation instructions for future reference.

IMPORTANT

This *ECU Cover* is exclusively designed for your vehicle. Please read the installation instructions thoroughly before beginning. Installation is easier if the vehicle is clean and free of debris. For your safety, and to ensure a satisfactory installation, perform all installation steps correctly in the sequence shown.

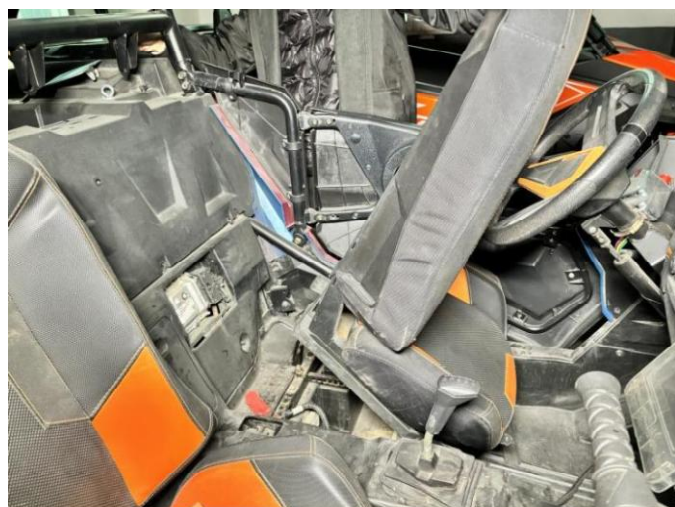
INSTALLATION INSTRUCTIONS

Note: Shift vehicle transmission into "PARK". Turn key to "OFF" position and remove from vehicle.

Product picture



1. First put the original driver seat down, then find the detection port, and remove the original cover, replace and install a new cover. As shown in the picture:



2. The installation is complete.

ECU Cover for Polaris RZR XP 1000 / RZR XP Turbo 2019-2023



Note: Please refer to the installation video in the Amazon listing before your installation, or contact the seller for the installation video.